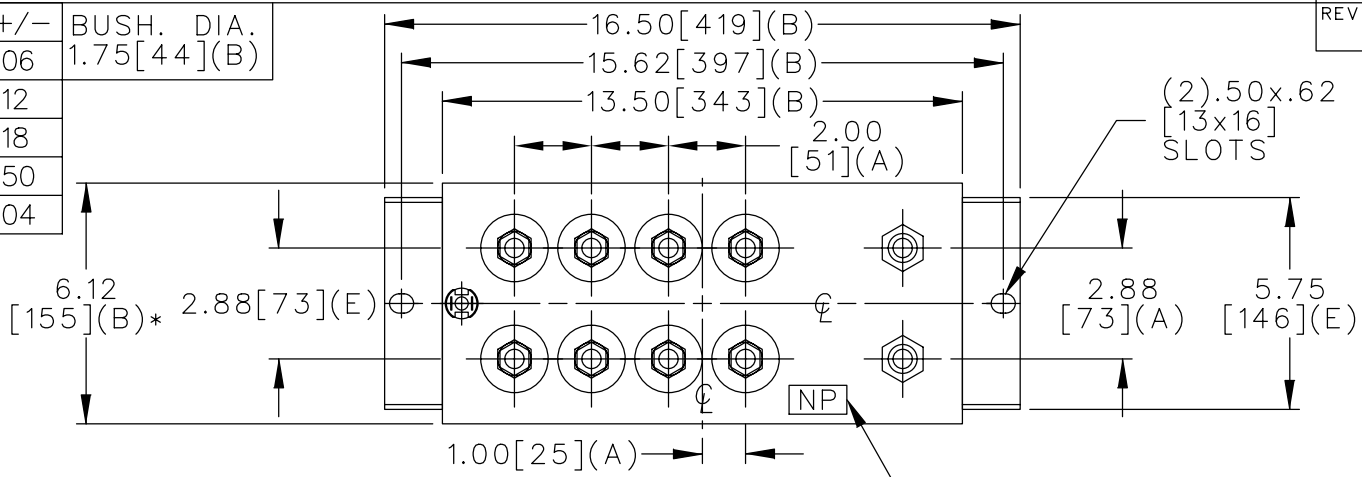
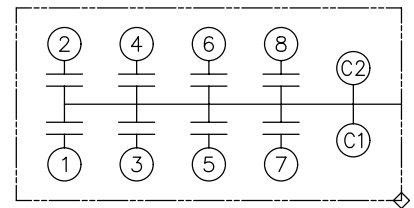


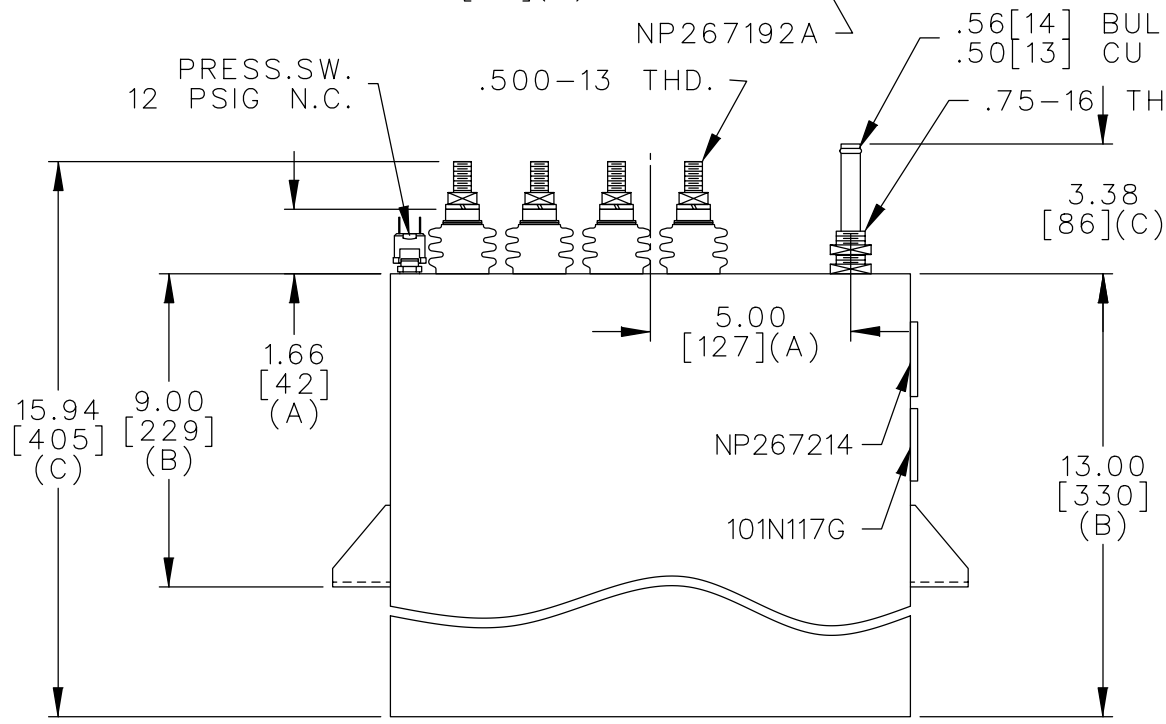
TOL	+/-	BUSH. DIA.
A	.06	1.75[44](B)
B	.12	
C	.18	
D	.50	
E	.04	



TERM	uF	kVAR
1	37.3	112.5
2	37.3	112.5
3	37.3	112.5
4	37.3	112.5
5	37.3	112.5
6	37.3	112.5
7	37.3	112.5
8	37.3	112.5



SCHEMATIC DIAGRAM - 801



NO INTERNAL DISCH RESISTORS
 CAT. 19L0558WH4 SN
 900KVAR 400V 3000HZ 1PH
 8 x 37.3 UF/TAP
 2.2 GALS. COMBUSTIBLE LIQUID
 CAUTION! BEFORE INSTALLING OR
 OPERATING READ GEH-2733
 NP267214

* UP TO +.50[13]
CASE BULGE

MAX. TERMINAL
TIGHTENING TORQUE
15 FT-LBS

NP267192A

	CAPACITOR & POWER PROTECTION FORT EDWARD, N.Y., U.S.A.		SIZE A	OUTLINE 19L0558WH4	SHEET 2 CONT. ON -
	DRAWN E.McGINN NOV. 8, 2001	ISSUED	SCALE		