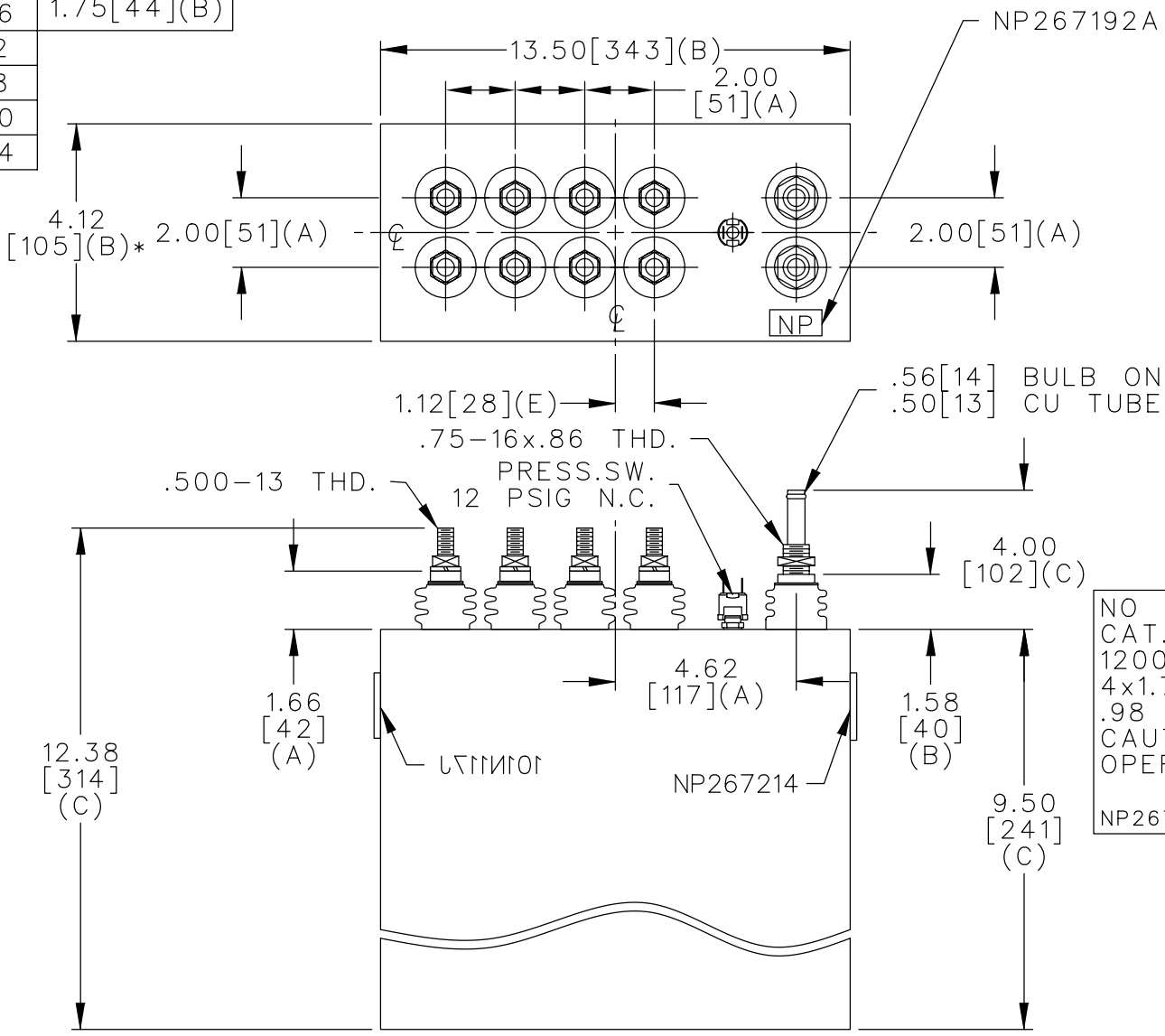
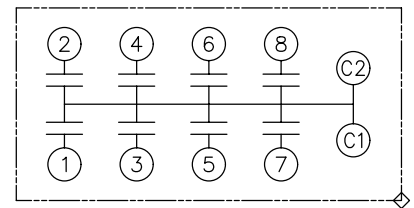


TOL	+/-	BUSH. DIA.
A	.06	1.75[44](B)
B	.12	
C	.18	
D	.50	
E	.04	



TERM	uF	kVAR
1	1.7	50
2	1.7	50
3	1.7	50
4	1.7	50
5	6.8	200
6	6.8	200
7	10.2	300
8	10.2	300



NO INTERNAL DISCH RESISTORS
 CAT. 19L0559WH2 SN
 1200KVAR 1250V 3KHZ 1PH
 4x1.7+2x6.8+2x10.2 UF/TAP
 .98 GAL. COMBUSTIBLE LIQUID
 CAUTION! BEFORE INSTALLING OR
 OPERATING READ GEH-2733
 NP267214

* UP TO +.50[13]
 CASE BULGE

MAX. TERMINAL
 TIGHTENING TORQUE
 15 FT-LBS

NP267192A

CAPACITOR & POWER PROTECTION
 FORT EDWARD, N.Y., U.S.A.

DRAWN E.McGINN MAY 13, 1997
 ISSUED 5-14-97

SIZE
A
 SCALE

OUTLINE
19L0559WH2

SHEET 2 CONT. ON -

DISTR TO