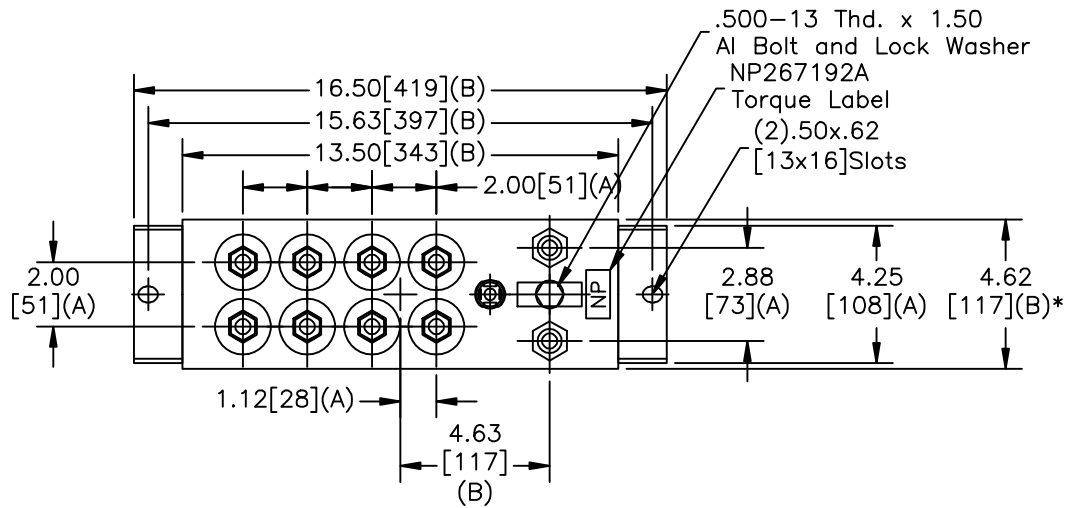
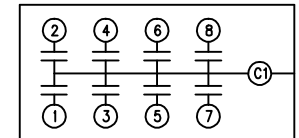
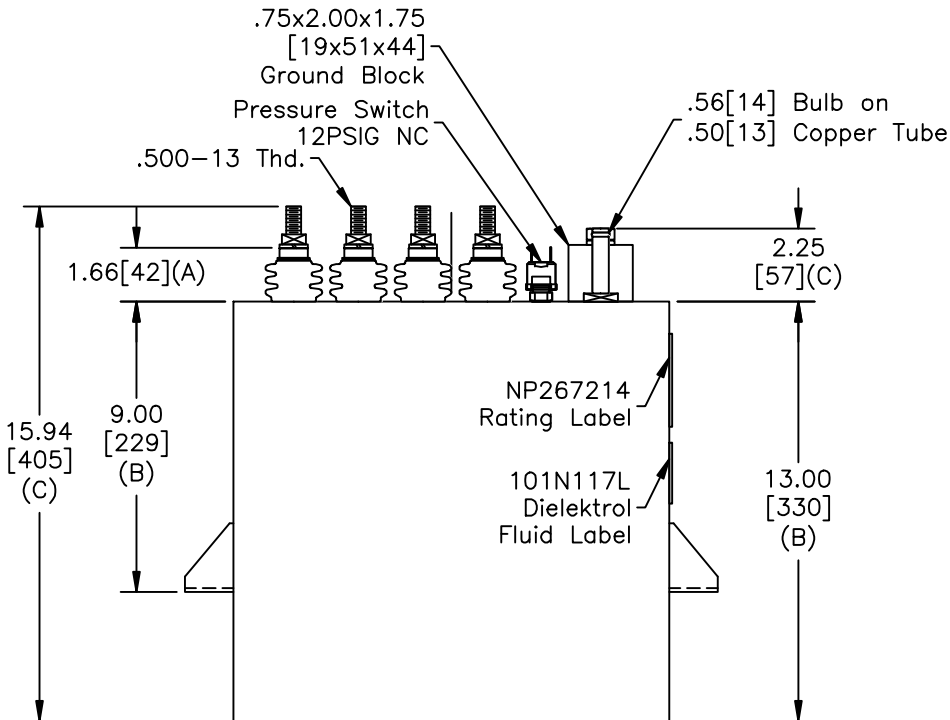


SIZE A	DWG NO 19L0567WH4	SHT 2	REV
REV	DESCRIPTION	DATE	APPROVED

TOL	+/-
A	.06
B	.12
C	.18
D	.50
E	.04
BUSH. DIA.	1.75[44](B)



TERM	uF	kVAR
1	9.9	75
2	9.9	75
3	9.9	75
4	9.9	75
5	19.9	150
6	19.9	150
7	19.9	150
8	19.9	150



SCHEMATIC DIAGRAM - 806

CAPACITOR
NO INTERNAL DISCHARGE RESISTORS

CAT. 19L0567WH4 SN
900KVAR 1000V 1200HZ 1PH
4x9.9+4x19.9UF/TAP
2.2 GAL. COMBUSTIBLE LIQUID
CAUTION! BEFORE INSTALLING OR
OPERATING READ GEH-2733

MADE IN USA NP267214

* UP TO +.50[13] CASE BULGE

MAX. TERMINAL TIGHTENING TORQUE
15 FT-LBS.

NP267192A

GE ENERGY FORT EDWARD, N.Y., U.S.A.	SIZE A	Est Weight 42 lbs.	OUTLINE		DISTR. TO
	DRAWN B.Ross		DATE 9/12/2008	19L0567WH4	
ISSUED	DATE 9/12/2008	SCALE WC2	SHEET 2	CONT ON 3	