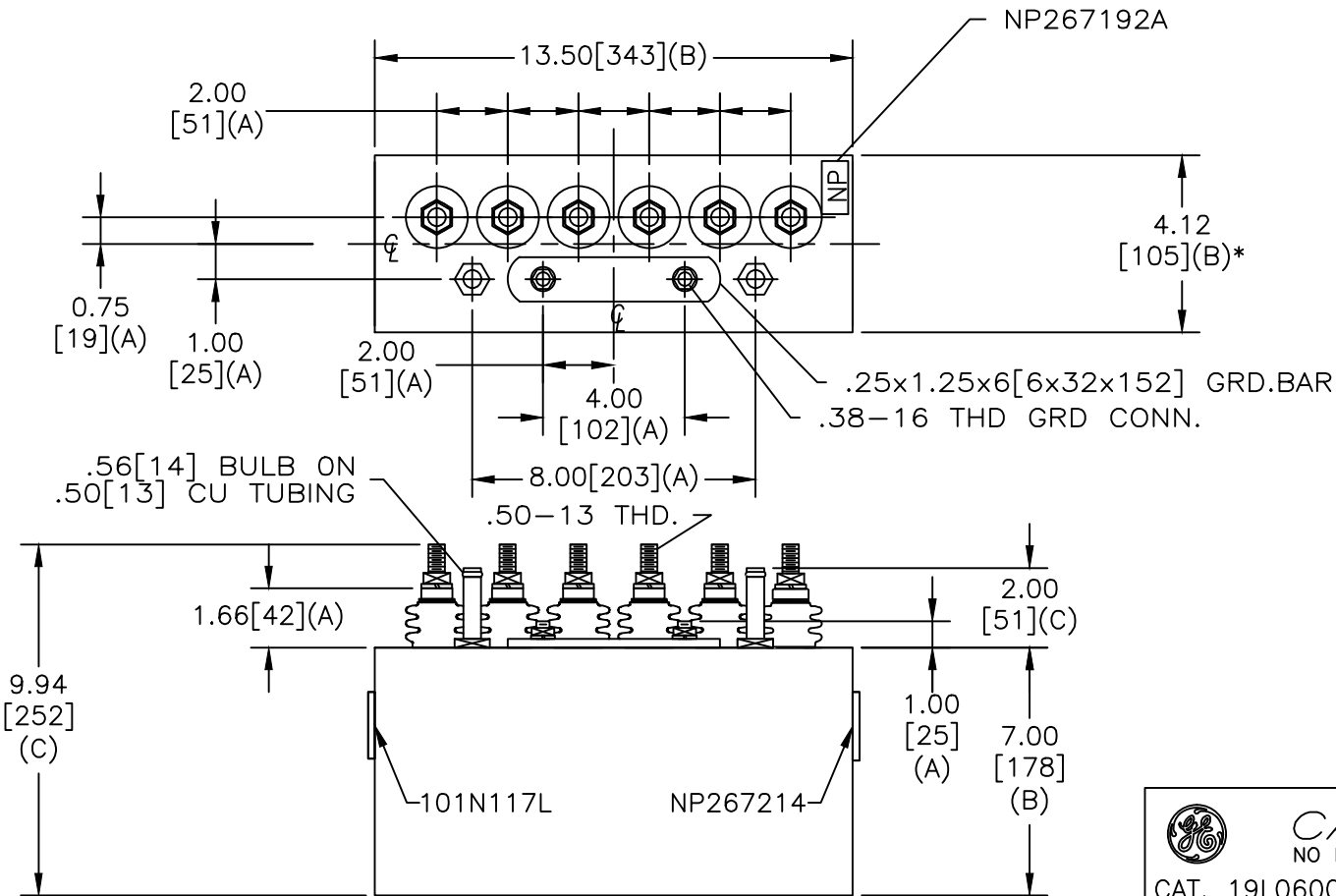
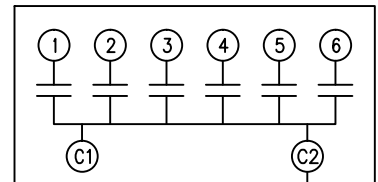



| | | | |
|-----------|---------------------------------|-------------------|-----------------|
| SIZE A | DWG NO 19L0600WH1 | SHT 2 | REV 4 |
| REV 4 | DESCRIPTION UPDARE UF & KVAR | DATE 6/23/2014 | APPROVED JBC |



| TERM | uF | kVAR |
|------|-------|-------|
| 1 | 2.06 | 6 |
| 2 | 4.11 | 12 |
| 3 | 8.07 | 23.56 |
| 4 | 16.14 | 47.11 |
| 5 | 24.20 | 70.67 |
| 6 | 24.20 | 70.67 |



SCHEMATIC DIAGRAM - 601

 **CAPACITOR**
NO INTERNAL DISCHARGE RESISTORS


CAT. 19L0600WH1 SN
230KVAR 220V 9600HZ 1PH
2+4+8+16+2X24.2 UF/TAP
0.9 GAL. COMBUSTIBLE LIQUID
CAUTION! BEFORE INSTALLING OR
OPERATING READ GEH-2733

MADE IN U.S.A. NP267214

* UP TO +.50 [13]
CASE BULGE

MAX. TERMINAL
TIGHTENING TORQUE
15 FT-LBS

NP267192A

| | | |
|---|-------------------|-----------|
|  GE ENERGY FORT EDWARD, N.Y., U.S.A. | | SIZE A |
| DRAWN TMO | DATE 3/19/1997 | SCALE |
| ISSUED | DATE 3/26/1997 | |

OUTLINE
19L0600WH1

SHEET 2 CONT ON -

DISTR. TO