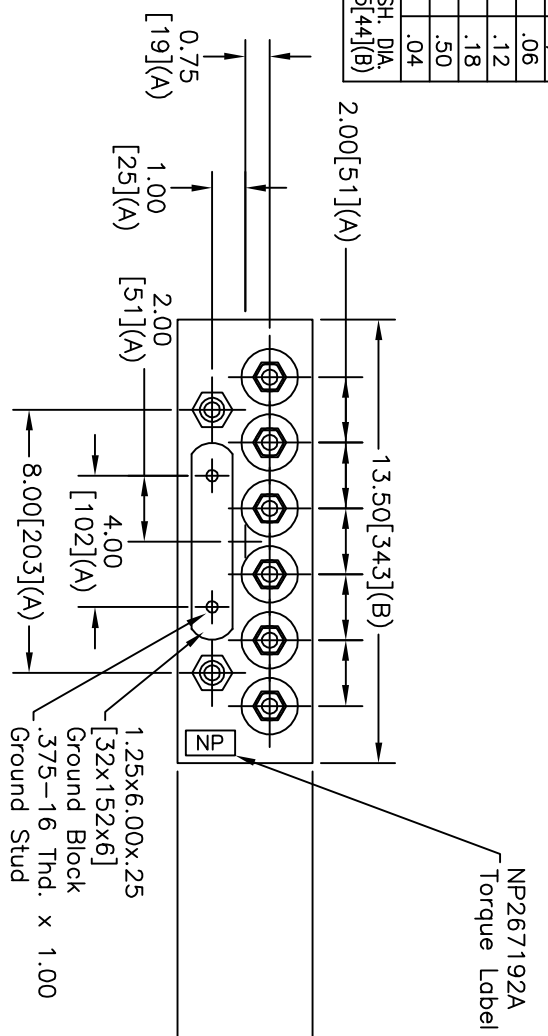
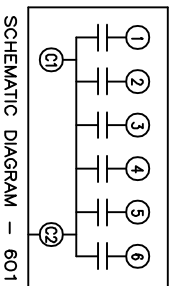
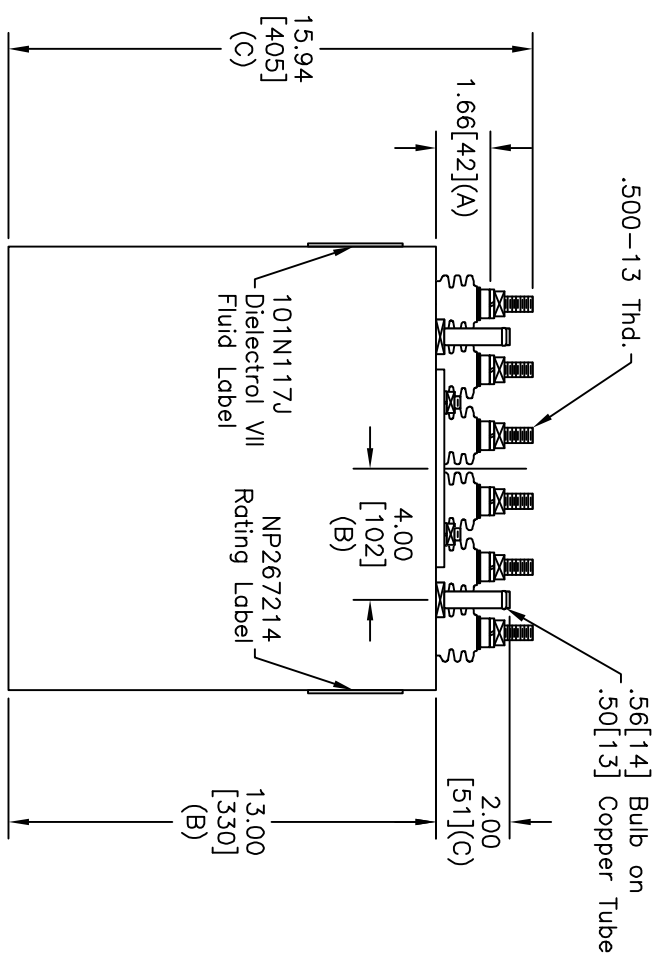


TOL	+/-
A	.06
B	.12
C	.18
D	.50
E	.04
BUSH. DIA.	1.75[.44](B)



TERM	UF	KVAR
1	2	7.7
2	4	15.4
3	8	30.9
4	16	61.8
5	24	92.6
6	24	92.6



NO INTERNAL DISCH RESISTORS
 CAT. 19L0603WH1 SN
 300KVAR 800V 960HZ 1PH
 2+4+8+16+2x24 UF/TAP
 1.47 GAL. COMBUSTIBLE LIQUID
 CAUTION! BEFORE INSTALLING OR
 OPERATING READ GEH-2733
 MADE IN USA
 NP267214

* UP TO +.50[13]
 CASE BULGE
 MAX. TERMINAL
 TIGHTENING TORQUE
 15 FT-LBS.
 NP267192A

GE ENERGY
FORT EDWARD, N.Y., U.S.A.

DRAWN **MCGINN** DATE **2/26/1998**

ISSUED DATE **3/4/1998**

SIZE **A**
 SCALE **WC9**

OUTLINE
19L0603WH1

SHEET **2** CONT **3**

SIZE	DWG NO	SHT	REV
A	19L0603WH1	2	1
REV	DESCRIPTION	DATE	APPROVED
1	RETRACE	6/7/2006	BTR