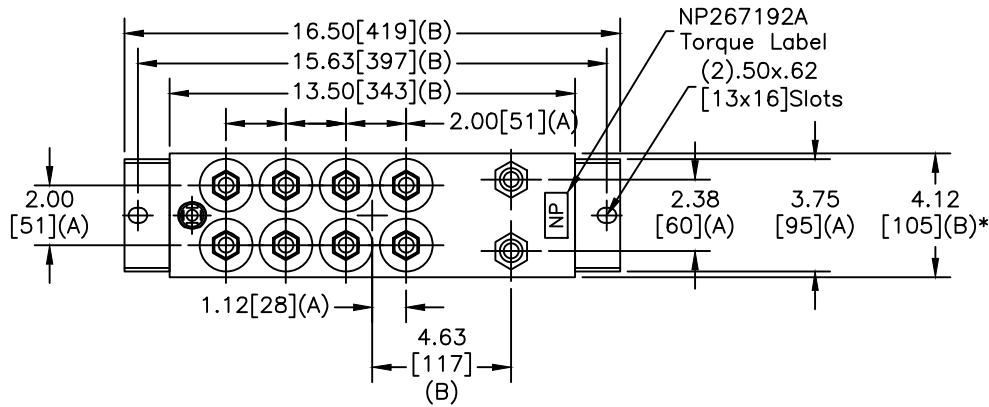
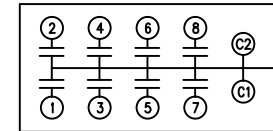
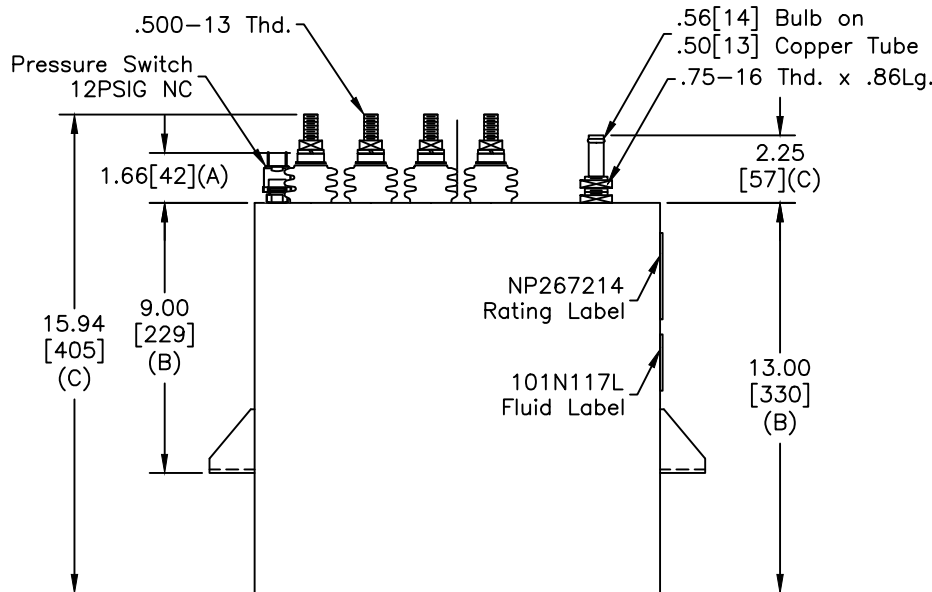


| | |
|------------|-------------|
| TOL | +/- |
| A | .06 |
| B | .12 |
| C | .18 |
| D | .50 |
| E | .04 |
| BUSH. DIA. | 1.75[44](B) |

| | | | |
|------|--------------------|-----------|----------|
| SIZE | DWG NO | SHT | REV |
| A | 19L0683WH4 | 2 | 2 |
| REV | DESCRIPTION | DATE | APPROVED |
| 2 | Update fluid label | 3/17/2015 | JBC |



| TERM | uF | kVAR |
|------|-------|-------|
| 1 | 3.27 | 96.3 |
| 2 | 6.53 | 192.3 |
| 3 | 13.08 | 385.2 |
| 4 | 13.08 | 385.2 |
| 5 | 13.08 | 385.2 |
| 6 | 13.08 | 385.2 |
| 7 | 13.08 | 385.2 |
| 8 | 13.08 | 385.2 |



SCHEMATIC DIAGRAM - 801

GE CAPACITOR
NO INTERNAL DISCHARGE RESISTORS

CAT. 19L0683WH4 SN
2600KVAR 1250V 3000HZ 1PH
3.27+6.53+6x13.08UF/TAP
1.4 GAL. COMBUSTIBLE LIQUID
CAUTION! BEFORE INSTALLING OR
OPERATING READ GEH-2733

MADE IN USA NP267214

* UP TO +.50[13]
CASE BULGE

MAX. TERMINAL
TIGHTENING TORQUE
15 FT-LBS.

NP267192A

| | | | | | |
|--------|--|--------------------|------------|-----------------------|-----------------------|
| | GE ENERGY FORT EDWARD, N.Y., U.S.A. | | SIZE A | Est Weight 44 lbs. | OUTLINE 19L0683WH4 |
| | DRAWN E.McGINN | DATE 11/18/1996 | SCALE | | |
| ISSUED | DATE 11/20/1996 | WC2 | SHEET 2 | CONT ON - | DISTR. TO |