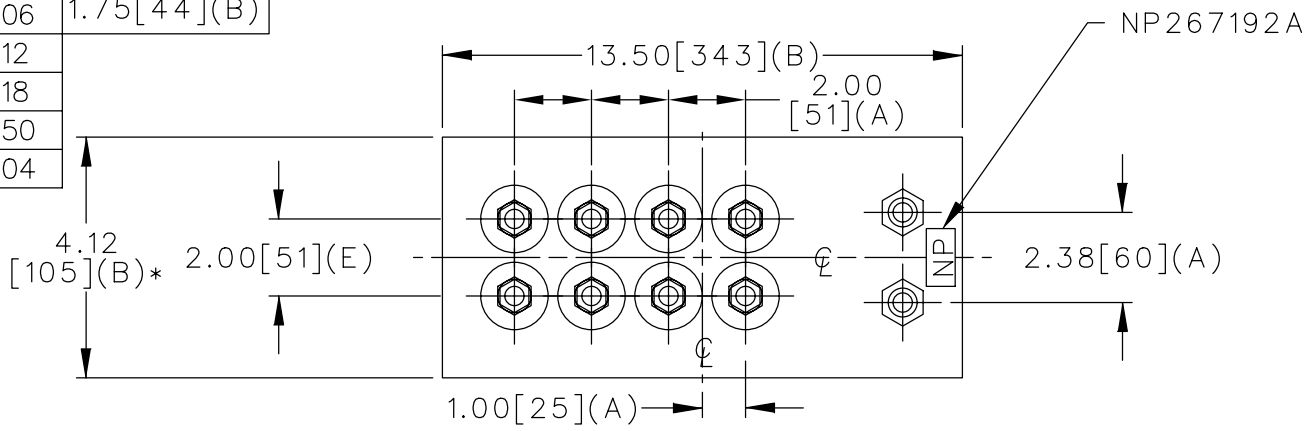
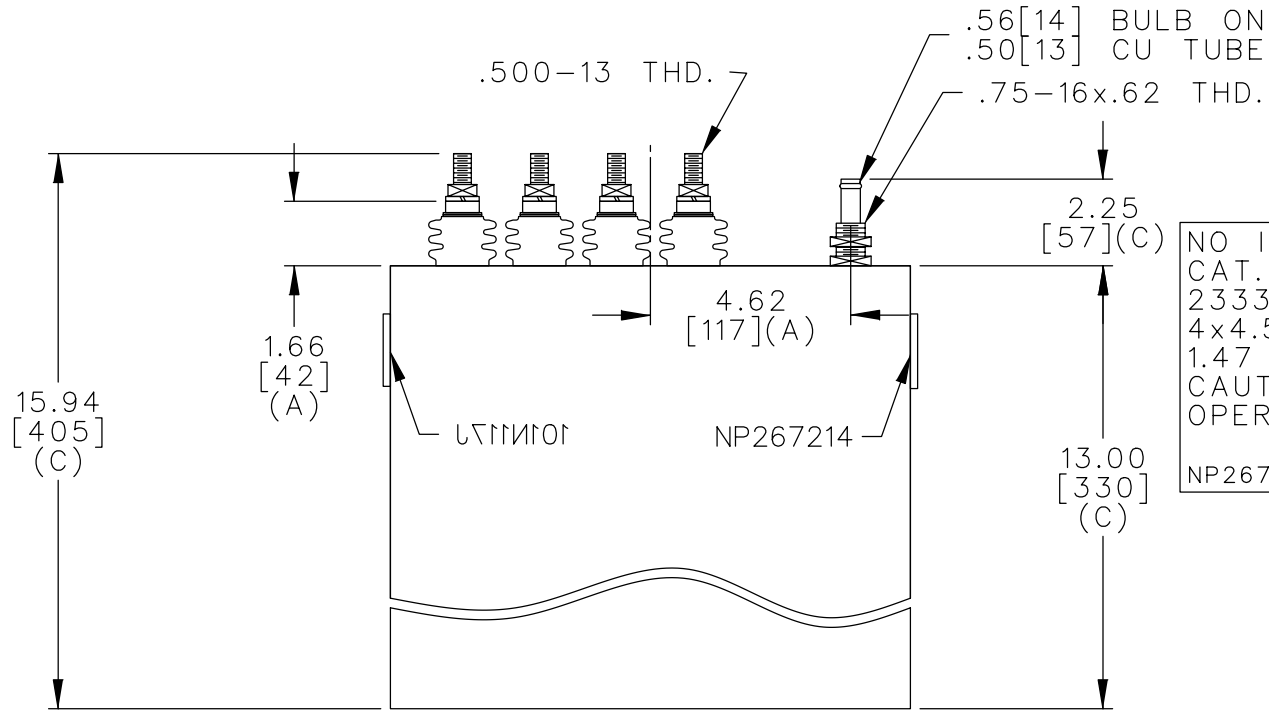
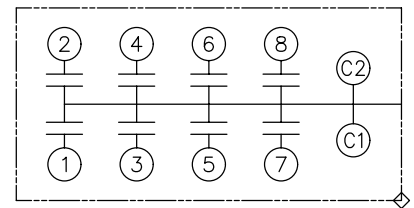


TOL	+/-	BUSH. DIA.
A	.06	1.75[44](B)
B	.12	
C	.18	
D	.50	
E	.04	



TERM	uF	kVAR
1	4.58	194.4
2	4.58	194.4
3	4.58	194.4
4	4.58	194.4
5	9.17	388.8
6	9.17	388.8
7	9.17	388.8
8	9.17	388.8



NO INTERNAL DISCH RESISTORS
 CAT. 19L0684WH1 SN
 2333KVAR 1500V 3000HZ 1PH
 4x4.58+4x9.17 UF/TAP
 1.47 GALS. COMBUSTIBLE LIQUID
 CAUTION! BEFORE INSTALLING OR
 OPERATING READ GEH-2733
 NP267214

* UP TO +.50[13]
 CASE BULGE

MAX. TERMINAL
 TIGHTENING TORQUE
 15 FT-LBS

NP267192A

	CAPACITOR & POWER PROTECTION FORT EDWARD, N.Y., U.S.A.	
	DRAWN E.McGINN	FEB. 23, 1998
	ISSUED	2-25-98

SIZE
A
 SCALE

OUTLINE
19L0684WH1

SHEET 2 CONT. ON -

DISTR TO