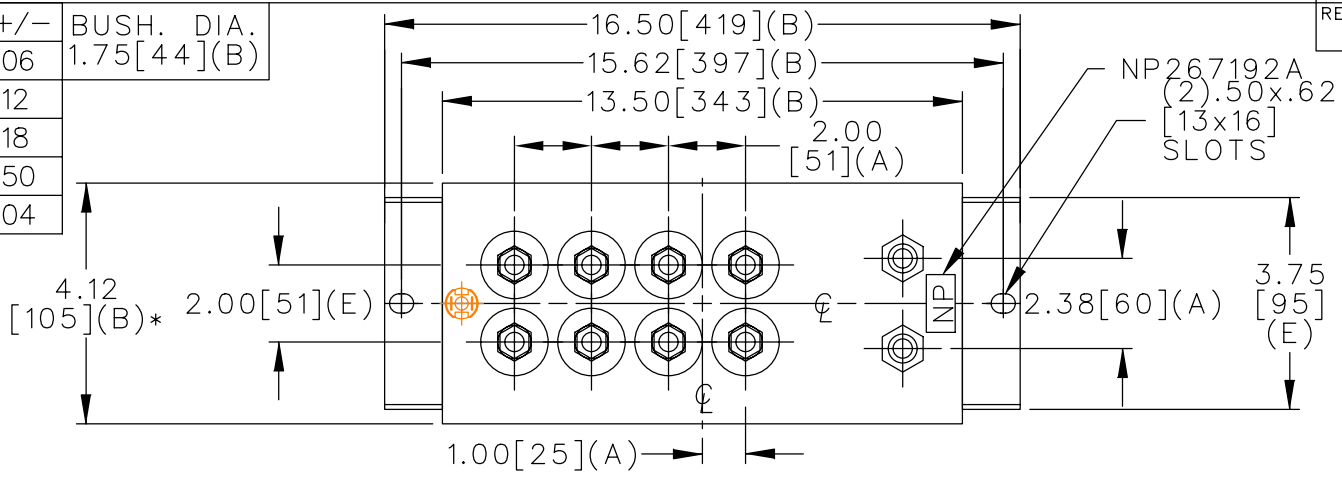
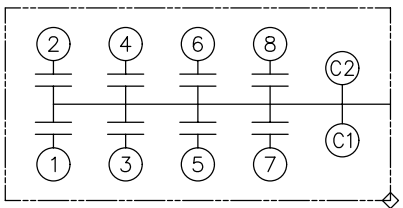


TOL	+/-	BUSH. DIA.
A	.06	1.75[44](B)
B	.12	
C	.18	
D	.50	
E	.04	

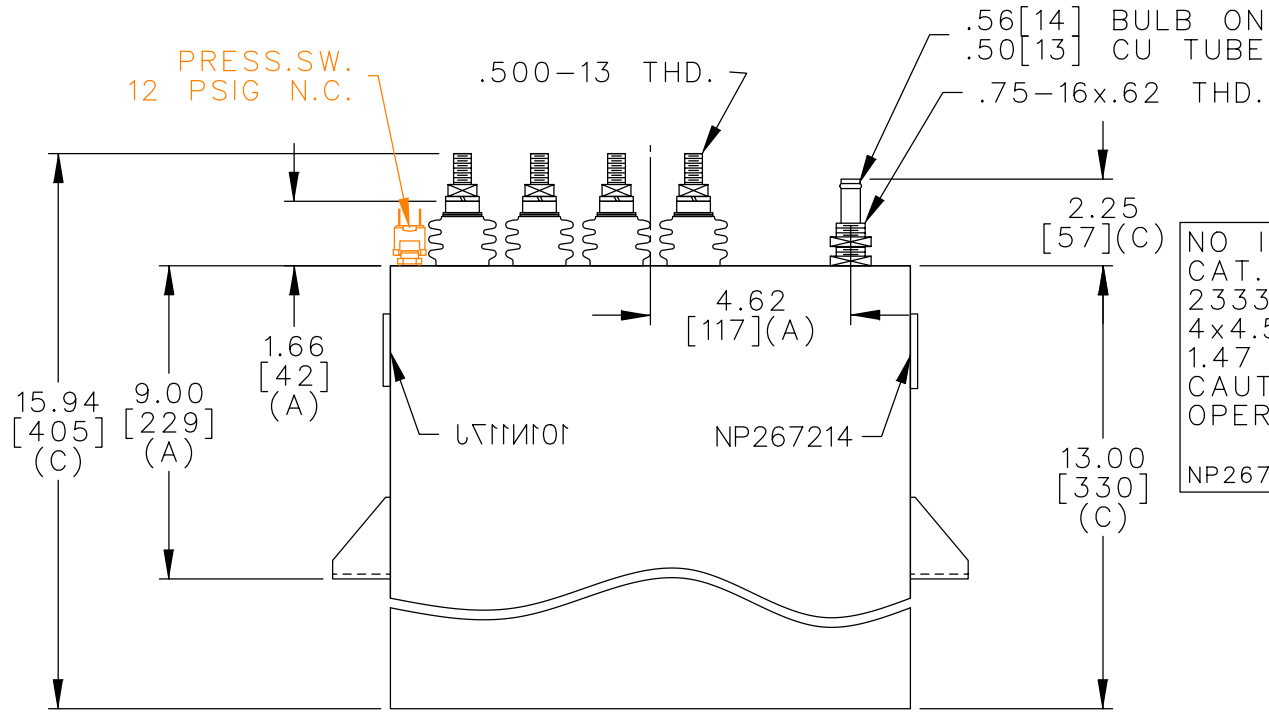


TERM	uF	kVAR
1	4.58	194.4
2	4.58	194.4
3	4.58	194.4
4	4.58	194.4
5	9.17	388.8
6	9.17	388.8
7	9.17	388.8
8	9.17	388.8



SCHEMATIC DIAGRAM - 801

PRESS.SW.  
12 PSIG N.C.



NO INTERNAL DISCH RESISTORS  
 CAT. 19L0684WH4 SN  
 2333KVAR 1500V 3000HZ 1PH  
 4x4.58+4x9.17 UF/TAP  
 1.47 GALS. COMBUSTIBLE LIQUID  
 CAUTION! BEFORE INSTALLING OR  
 OPERATING READ GEH-2733  
 NP267214

\* UP TO +.50[13]  
CASE BULGE

MAX. TERMINAL  
TIGHTENING TORQUE  
15 FT-LBS

NP267192A

	CAPACITOR & POWER PROTECTION FORT EDWARD, N.Y., U.S.A.		SIZE <b>A</b>	<b>OUTLINE</b> <b>19L0684WH4</b>	SHEET 2 CONT. ON -
	DRAWN E.McGINN	DEC. 12, 1997	SCALE		
ISSUED	12-17-97	DISTR TO			