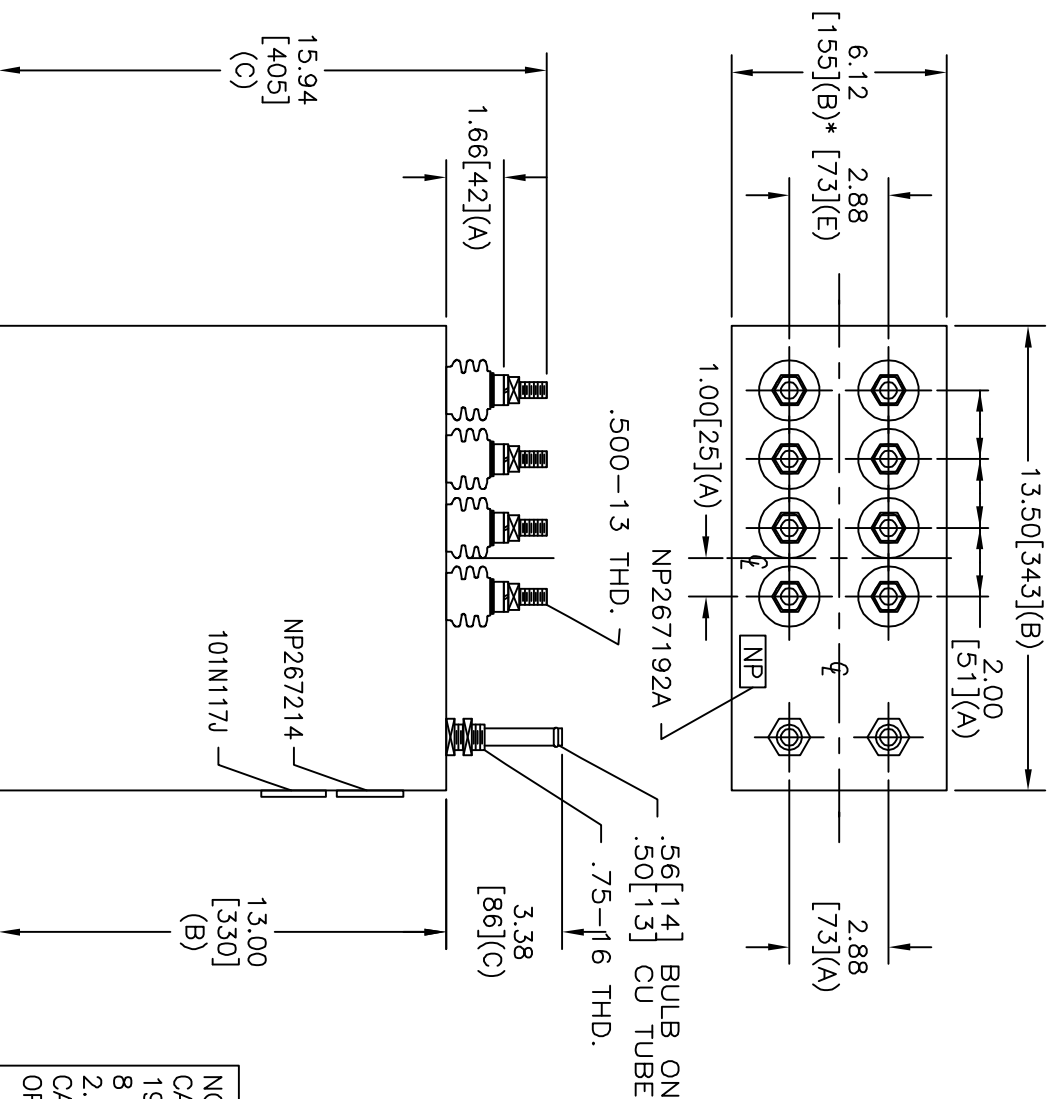
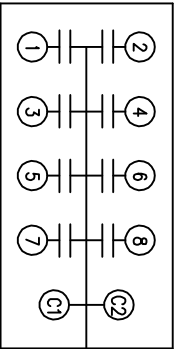


TOL	+/-	BUSH. DIA.
A	.06	1.75[.44](B)
B	.12	
C	.18	
D	.50	
E	.04	



SIZE	DWG NO	SHT	REV
A	19L0685WH1	2	2
REV	DESCRIPTION	DATE	APPROVED
2	CORRECT NP CAT	1/7/04	BTR

TERM	UF	KVAR
1	19.69	237.5
2	19.69	237.5
3	19.69	237.5
4	19.69	237.5
5	19.69	237.5
6	19.69	237.5
7	19.69	237.5
8	19.69	237.5



SCHEMATIC DIAGRAM - 801

NO INTERNAL DISCH RESISTORS
 CAT. 19L0685WH1 SN
 1900KVAR 800V 3000HZ 1PH
 8 x 19.69 uF/TAP
 2.2 GAL. COMBUSTIBLE LIQUID
 CAUTION! BEFORE INSTALLING OR
 OPERATING READ GEH-2733

NP267214

* UP TO +.50[.13]
 CASE BULGE

MAX. TERMINAL
 TIGHTENING TORQUE
 15 FT-LBS

NP267192A

INDUSTRIAL SYSTEMS
 FORT EDWARD, N.Y., U.S.A.

DRAWN E. McGinn
 DATE 12-12-01

ISSUED DATE 12-12-01

SIZE **A**

OUTLINE
 19L0685WH1

SHEET 2 CONT 3

DISTR. TO