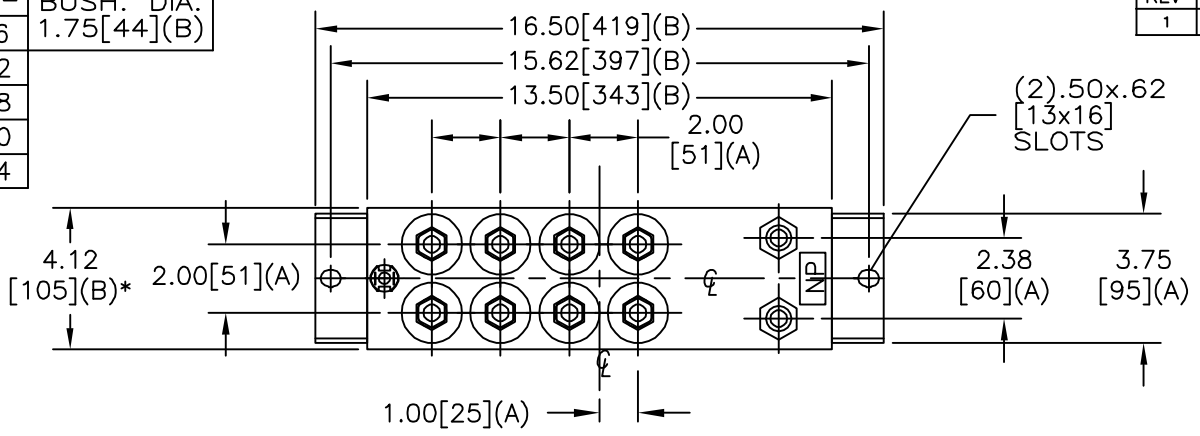
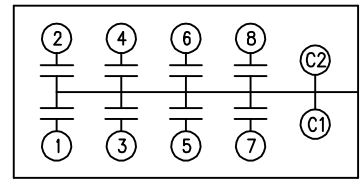


| | | | |
|-----------|----------------------------|-----------------|-----------------|
| SIZE A | DWG NO 19L0686WH4 | SHT 2 | REV 1 |
| REV 1 | DESCRIPTION CHG CAT NO. | DATE 2/11/04 | APPROVED BTR |

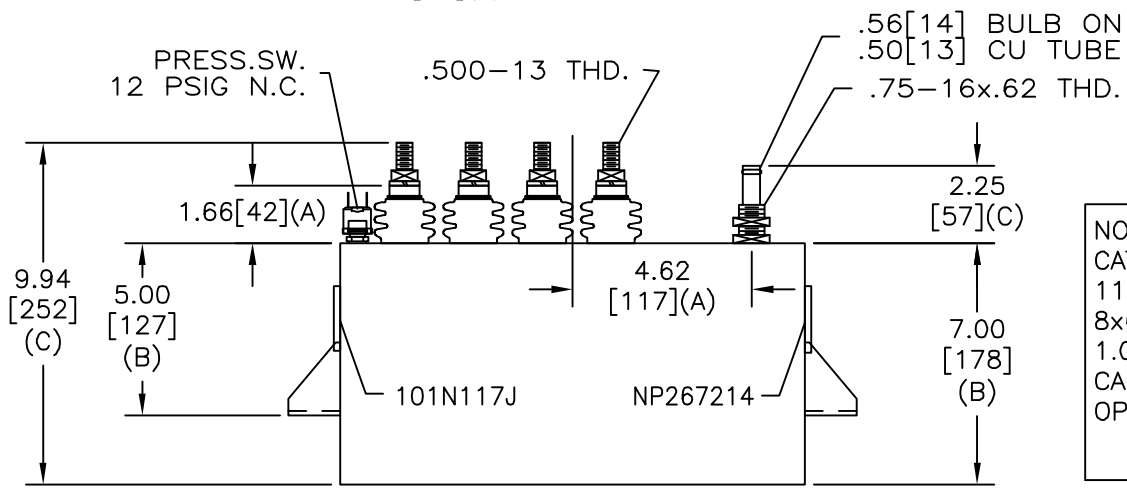
| | | |
|-----|-----|---------------------------|
| TOL | +/- | BUSH. DIA. 1.75[44](B) |
| A | .06 | |
| B | .12 | |
| C | .18 | |
| D | .50 | |
| E | .04 | |



| TERM | uF | kVAR |
|------|------|-------|
| 1 | 6.36 | 143.8 |
| 2 | 6.36 | 143.8 |
| 3 | 6.36 | 143.8 |
| 4 | 6.36 | 143.8 |
| 5 | 6.36 | 143.8 |
| 6 | 6.36 | 143.8 |
| 7 | 6.36 | 143.8 |
| 8 | 6.36 | 143.8 |



SCHEMATIC DIAGRAM - 801



NO INTERNAL DISCH RESISTORS
 CAT. 19L686WH4 SN
 1150KVAR 600V 10000HZ 1PH
 8x6.36 UF/TAP
 1.00 GAL. COMBUSTIBLE LIQUID
 CAUTION! BEFORE INSTALLING OR
 OPERATING READ GEH-2733
 NP267214

* UP TO +.50[13]
 CASE BULGE

MAX. TERMINAL
 TIGHTENING TORQUE
 15 FT-LBS

NP267192A

| | | |
|--|--------------------------------------|-------------------------------------|
| INDUSTRIAL SYSTEMS FORT EDWARD, N.Y., U.S.A. | SIZE A | OUTLINE 19L0686WH4 |
| | DRAWN E. McGinn DATE SEP 12, 1997 | |
| ISSUED DATE 9-17-97 | SHEET 2 CONT ON - | DISTR. TO |