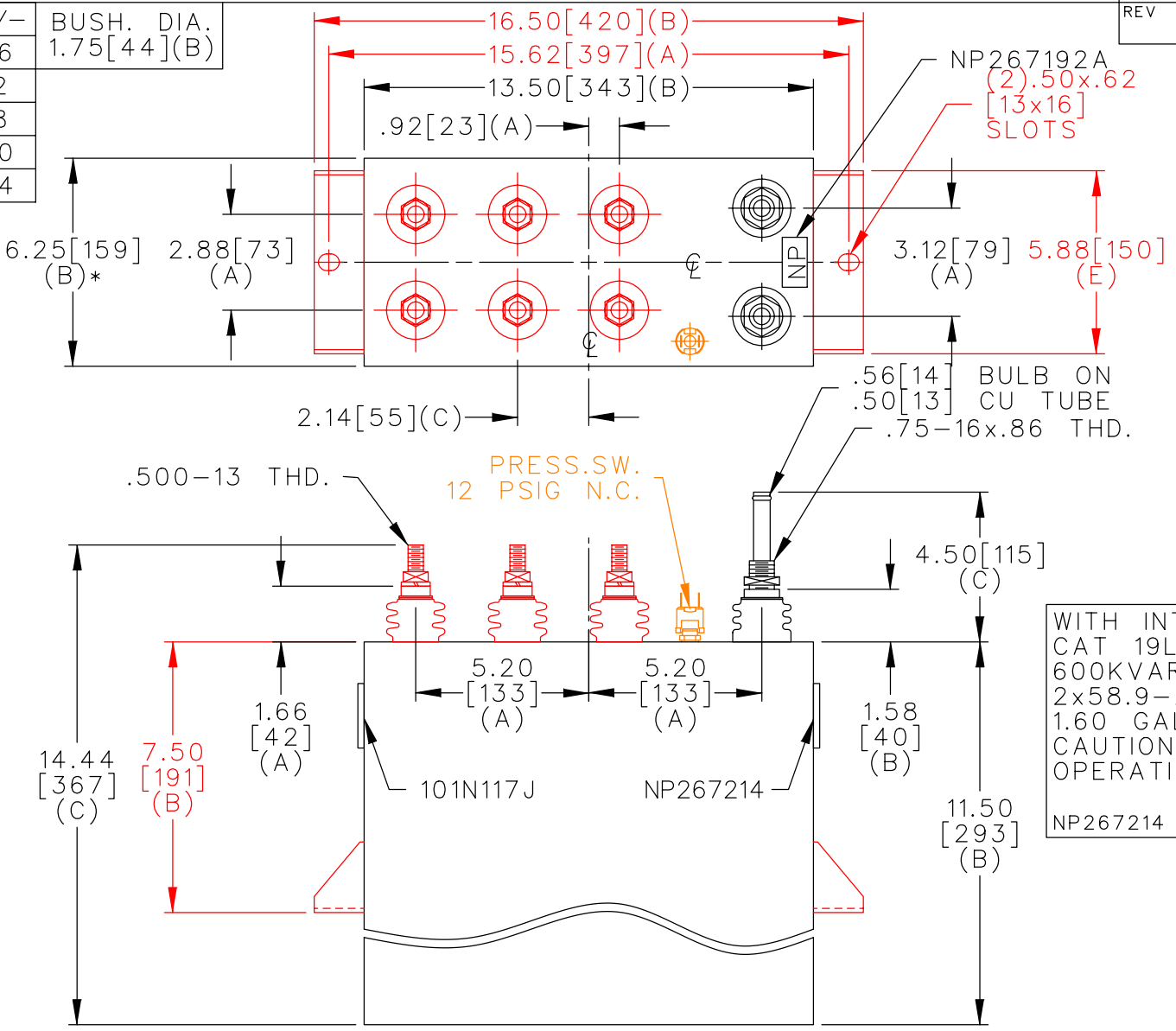
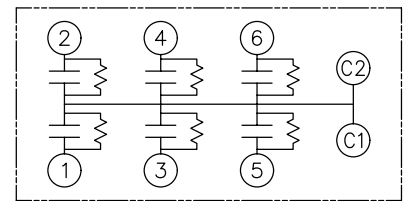


TOL	+/-	BUSH. DIA.
A	.06	1.75[44](B)
B	.12	
C	.18	
D	.50	
E	.04	



TERM	uF	kVAR
1	58.95	200
2	58.95	200
3	29.47	100
4	14.74	50
5	7.37	25
6	7.37	25



WITH INTERNAL DISCH RESISTORS  
 CAT 19L0700WH4 SN  
 600KVAR 1000V 540HZ 1PH  
 2x58.9-29.4-14.7-2x7.4UF/TAP  
 1.60 GAL COMBUSTIBLE LIQUID  
 CAUTION! BEFORE INSTALLING OR  
 OPERATING READ GEH-2733  
 NP267214

\* UP TO +.50[13]  
 CASE BULGE

MAX. TERMINAL  
 TIGHTENING TORQUE  
 15 FT-LBS

NP267192A

<p>CAPACITOR &amp; POWER PROTECTION          FORT EDWARD, N.Y., U.S.A.</p>	<p>SIZE <b>A</b></p>	<p>UNIT WEIGHT          51 / 23          LB/KG</p>	<p><b>OUTLINE</b>          19L0700WH4</p>
	<p>DRAWN E.McGINN AUG. 31, 1998</p>	<p>ISSUED</p>	
<p>SHEET 2 CONT. 3</p>			<p>DISTR TO</p>