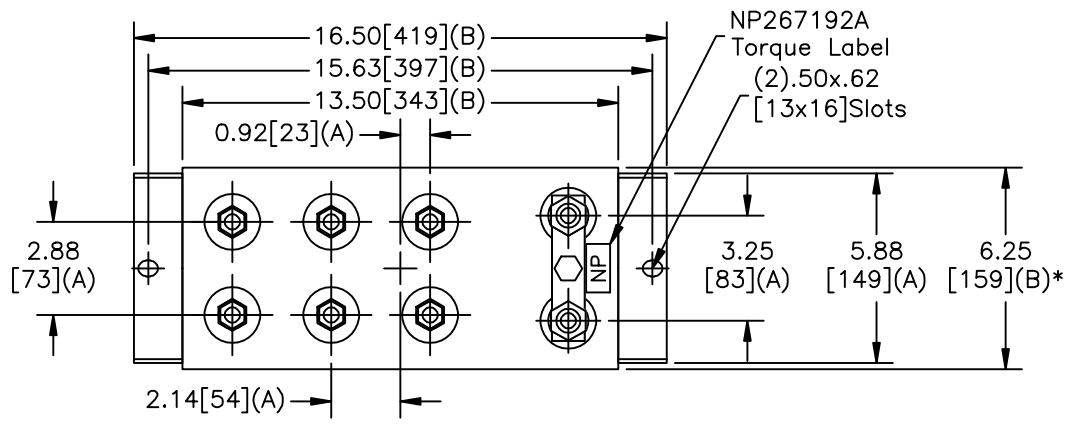
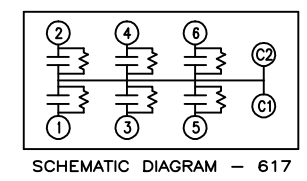
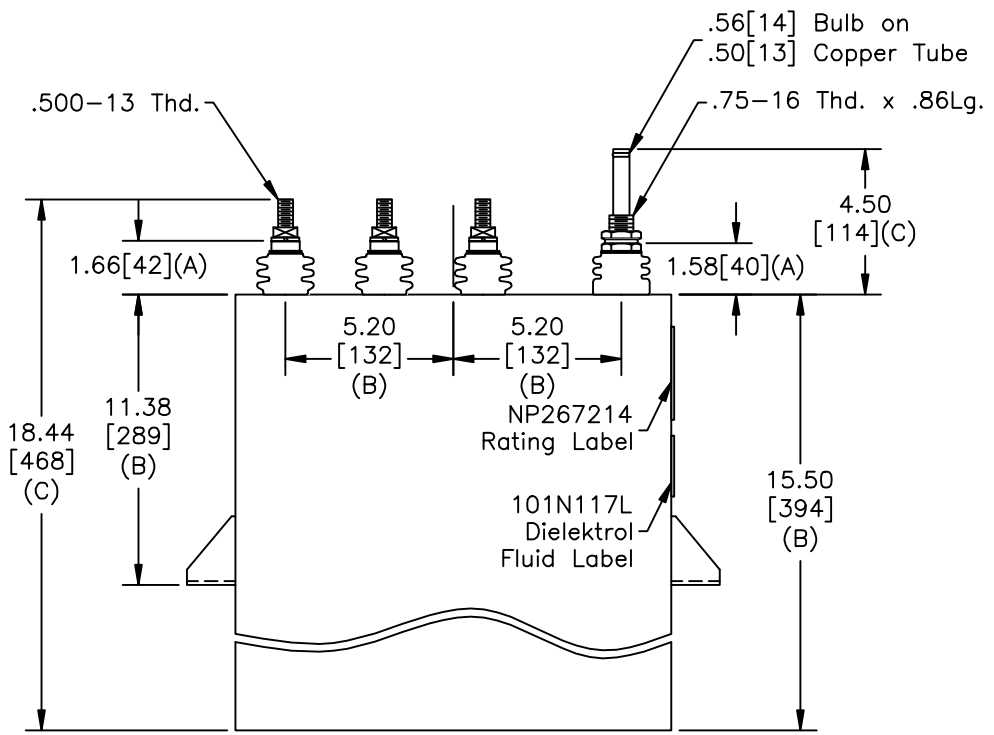


SIZE A	DWG NO 19L0706WH3	SHT 2	REV 0
REV 0	DESCRIPTION NEW	DATE 6/25/2008	APPROVED BTR

TOL	+/-
A	.06
B	.12
C	.18
D	.50
E	.04
BUSH. DIA.	1.75[44](B)



TERM	uF	kVAR
1	10	6
2	20	13
3	40	25
4	80	51
5	160	102
6	160	102



**GE CAPACITOR**  
WITH INTERNAL DISCHARGE RESISTORS

CAT. 19L0706WH3 SN  
300KVAR 750V 180HZ 1PH  
10+20+40+80+2x160UF/TAP  
2.11 GAL. COMBUSTIBLE LIQUID  
CAUTION! BEFORE INSTALLING OR  
OPERATING READ GEH-2733

MADE IN USA NP267214

\* UP TO +.50[13] CASE BULGE

MAX. TERMINAL TIGHTENING TORQUE 15 FT-LBS.

<b>GE ENERGY</b> FORT EDWARD, N.Y., U.S.A.	SIZE A	Est Weight 78 lbs.	<h1>OUTLINE</h1> <h2>19L0706WH3</h2>		DISTR. TO
	DRAWN B.Ross ISSUED				