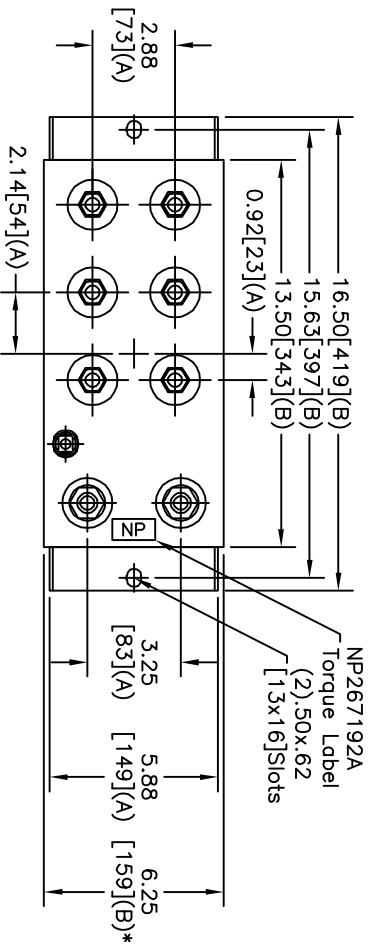
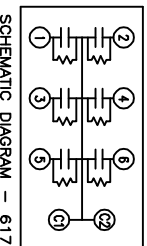
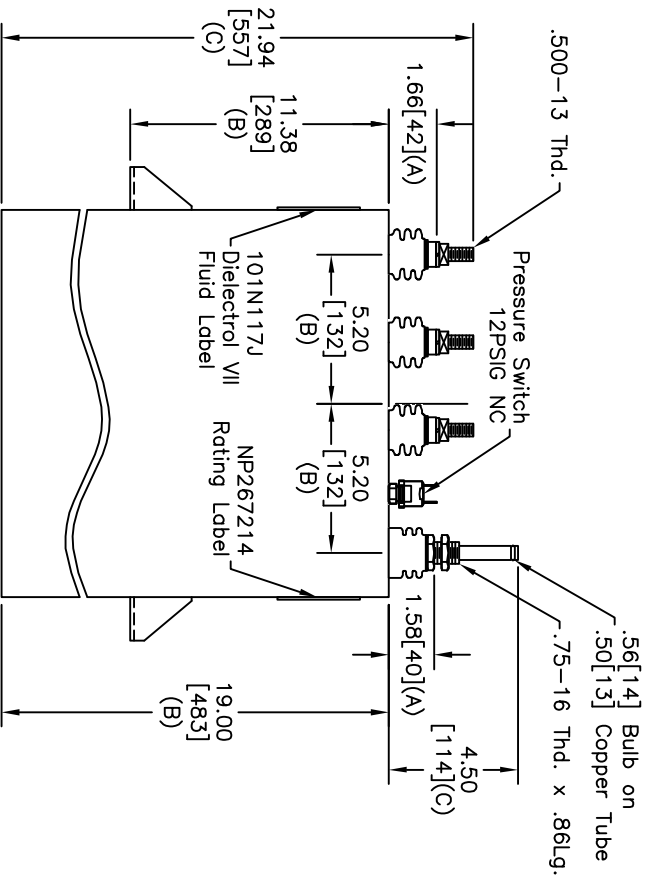


| TOL | +/- |
|-----------|------------|
| A | .06 |
| B | .12 |
| C | .18 |
| D | .50 |
| E | .04 |
| BUSH, DIA | 1.75[4](B) |



| TERM | UF | KVAR |
|------|-------|------|
| 1 | 78.6 | 50 |
| 2 | 78.6 | 50 |
| 3 | 78.6 | 50 |
| 4 | 78.6 | 50 |
| 5 | 157.2 | 100 |
| 6 | 157.2 | 100 |



WITH INTERNAL DISCH RESISTORS
 CAT. 19L0707WH4 SN
 400KVAR 750V 180HZ 1PH
 4x78.6+2x157.2UF/TAP
 2.28 GAL. COMBUSTIBLE LIQUID
 CAUTION! BEFORE INSTALLING OR
 OPERATING READ GEH-2733
 MADE IN USA
 NP267214

| SIZE | DWG NO | SHT | REV |
|------|----------------|-----------|----------|
| A | 19L0707WH4 | 2 | 1 |
| REV | DESCRIPTION | DATE | APPROVED |
| 1 | UPDATE CAT NO. | 12/5/2006 | BTR |

MAX. TERMINAL
 TIGHTENING TORQUE
 15 FT-LBS.
 NP267192A

| | | | |
|--|--------|------------|-----------|
| GE ENERGY FORT EDWARD, N.Y., U.S.A. | | SIZE | A |
| | | SCALE | W/C6 |
| DRAWN | B.ROSS | DATE | 10/6/1997 |
| ISSUED | | DATE | 10/8/1997 |
| OUTLINE 19L0707WH4 | | Est Weight | 84 lbs. |
| | | SHEET | 2 |
| DISTR. TO | | CONT | 3 |