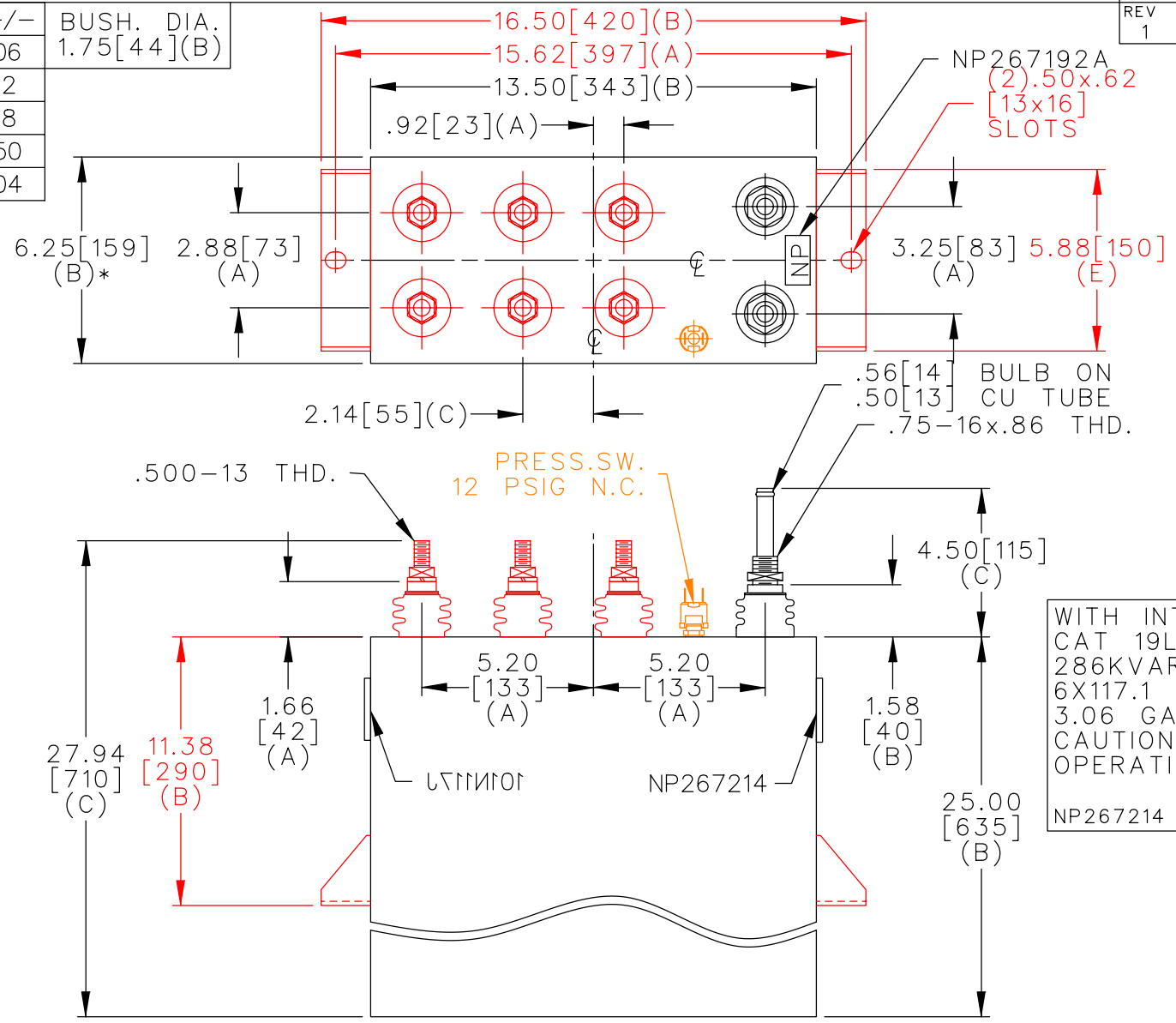
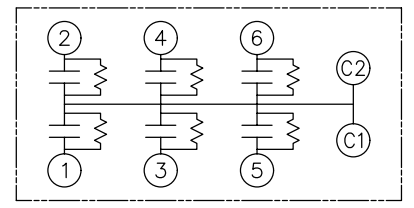


TOL	+/-	BUSH. DIA.
A	.06	1.75[44](B)
B	.12	
C	.18	
D	.50	
E	.04	



TERM	uF	kVAR
1	117.1	47.67
2	117.1	47.67
3	117.1	47.67
4	117.1	47.67
5	117.1	47.67
6	117.1	47.67



SCHEMATIC DIAGRAM - 617

WITH INTERNAL DISCH RESISTORS
 CAT 19L0715WH4 SN
 286KVAR 600V 180HZ 1PH
 6X117.1 UF/TAP
 3.06 GAL COMBUSTIBLE LIQUID
 CAUTION! BEFORE INSTALLING OR
 OPERATING READ GEH-2733
 NP267214

* UP TO +.50[13]
 CASE BULGE

MAX. TERMINAL
 TIGHTENING TORQUE
 15 FT-LBS

NP267192A

	CAPACITOR & POWER PROTECTION FORT EDWARD, N.Y., U.S.A.		SIZE A	UNIT WEIGHT 105 / 48 LB/KG	<h1>OUTLINE</h1> <h2>19L0715WH4</h2>	DISTR TO
	DRAWN 12/09/98	LRD 12/09/98	SCALE WC6	version		
ISSUED 12/16/98						