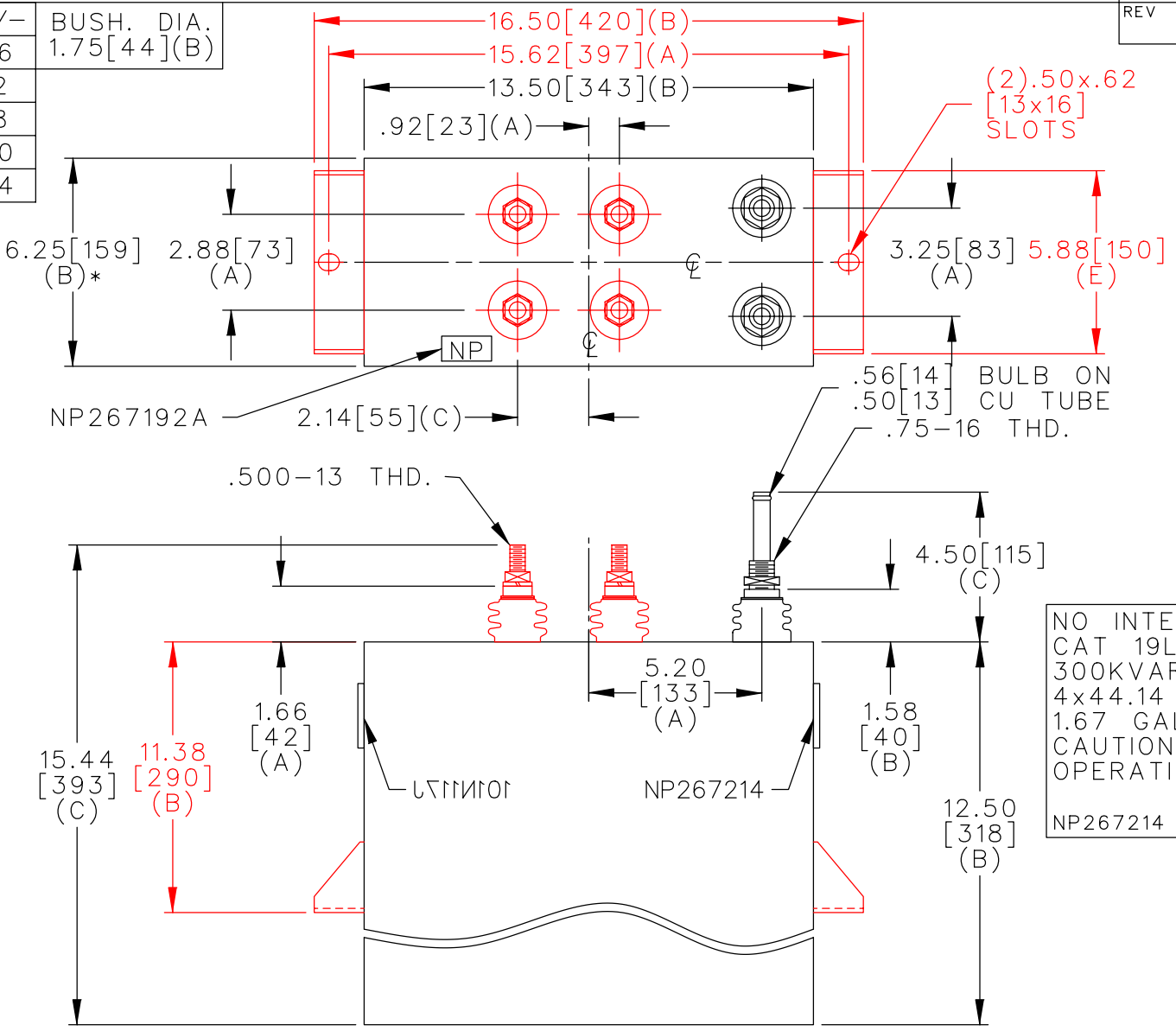
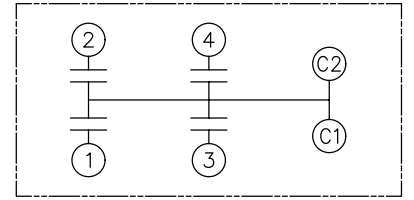


TOL	+/-	BUSH. DIA.
A	.06	1.75 [44] (B)
B	.12	
C	.18	
D	.50	
E	.04	



TERM	uF	kVAR
1	44.14	75
2	44.14	75
3	44.14	75
4	44.14	75



SCHEMATIC DIAGRAM - 420

NO INTERNAL DISCH RESISTORS
 CAT 19L0717WH3 SN
 300KVAR 520V 1000HZ 1PH
 4x44.14 UF/TAP
 1.67 GAL COMBUSTIBLE LIQUID
 CAUTION! BEFORE INSTALLING OR
 OPERATING READ GEH-2733
 NP267214

* UP TO +.50 [13]
 CASE BULGE

MAX. TERMINAL
 TIGHTENING TORQUE
 15 FT-LBS

NP267192A

	CAPACITOR & POWER PROTECTION FORT EDWARD, N.Y., U.S.A.		SIZE A	UNIT WEIGHT 54 / 25 LB/KG	OUTLINE 19L0717WH3	DISTR TO
	DRAWN E.McGINN	NOV. 13, 1997	SCALE	SHEET 2 CONT. 3		