

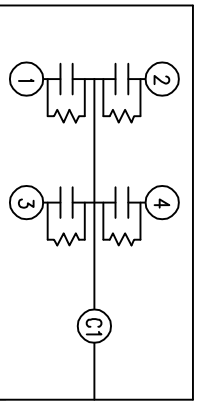
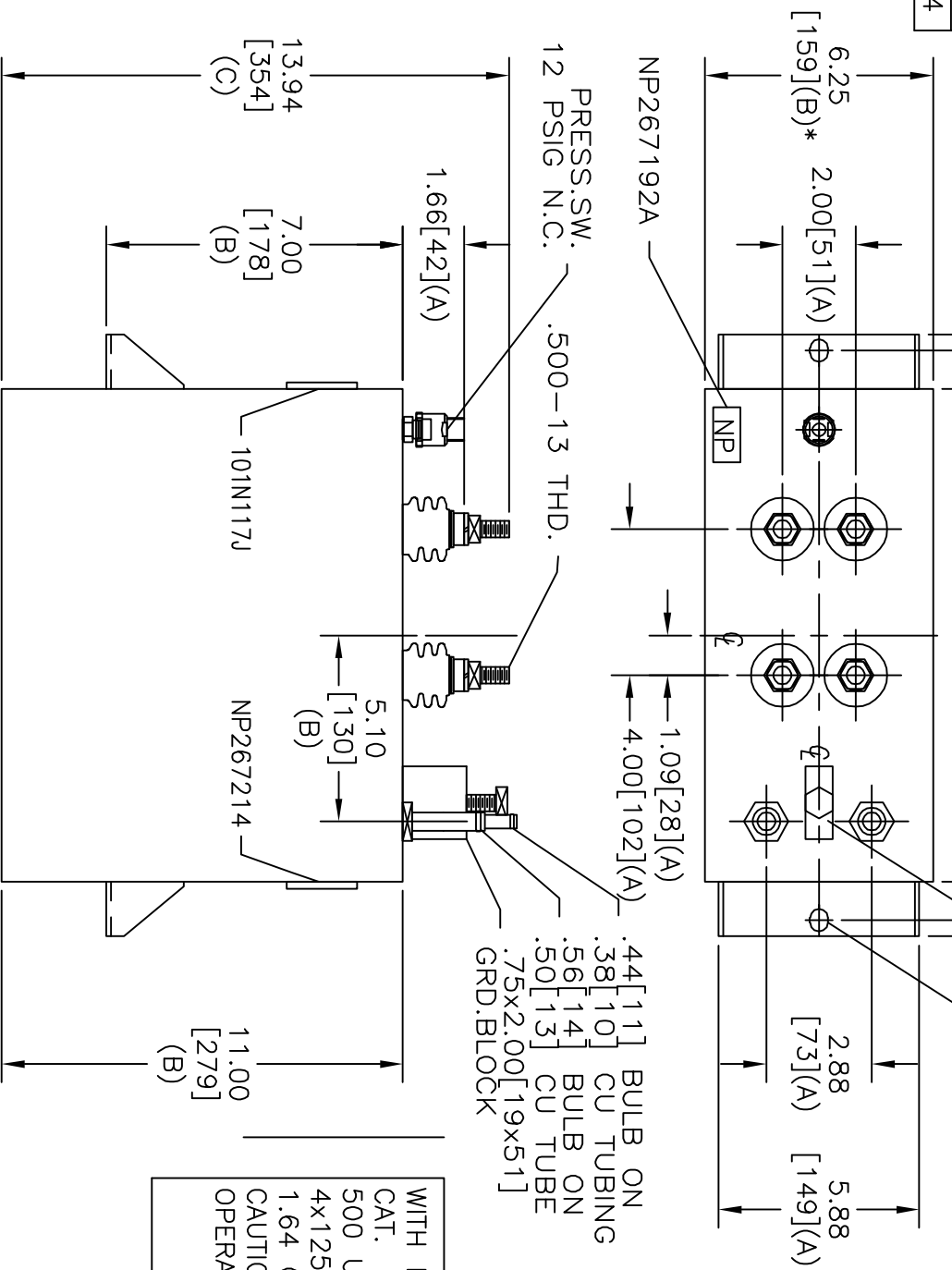
TOL	+/-
A	.06
B	.12
C	.18
D	.50
E	.04

BUSH. DIA.  
1.75[44](B)

16.50[419](B)  
15.62[397](A)  
13.50[343](B)

.50-13 THD  
x 1.5 BOLT  
(2) .50x.62  
[13x16]  
SLOTS

TERM	UF
1	125
2	125
3	125
4	125



WITH INTERNAL DISCH RESISTORS  
CAT. 19L0724WH4 SN  
500 UF 1000VDC  
4x125 UF/TAP  
1.64 GAL. COMBUSTIBLE LIQUID  
CAUTION! BEFORE INSTALLING OR  
OPERATING READ GEH-2733

NP267214

\* UP TO +.50[13]  
CASE BULGE

MAX. TERMINAL  
TIGHTENING TORQUE  
15 FT-LBS



INDUSTRIAL SYSTEMS  
FORT EDWARD, N.Y., U.S.A.

DRAWN	E. McGinn	DATE	JUL 22, 1998
ISSUED		DATE	7/22/98

SIZE	A		
SCALE			
SHEET	2	CONT	3
OUTLINE			
19L0724WH4			