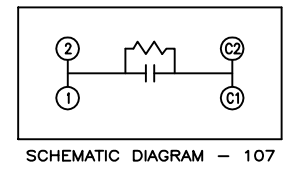
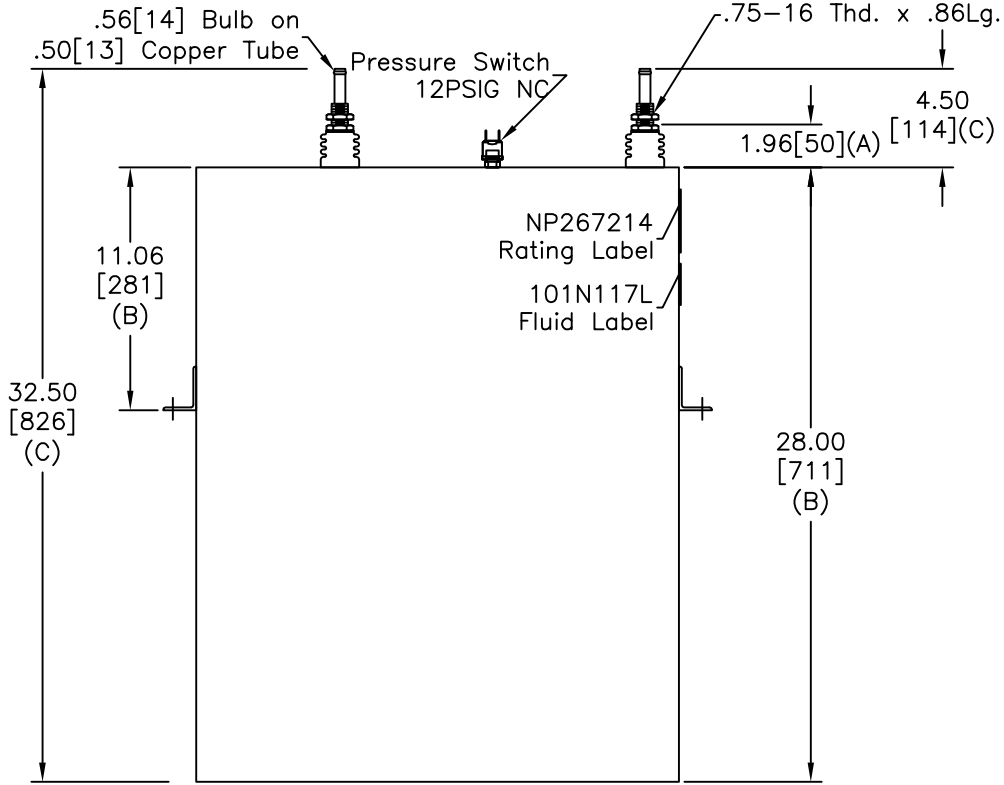
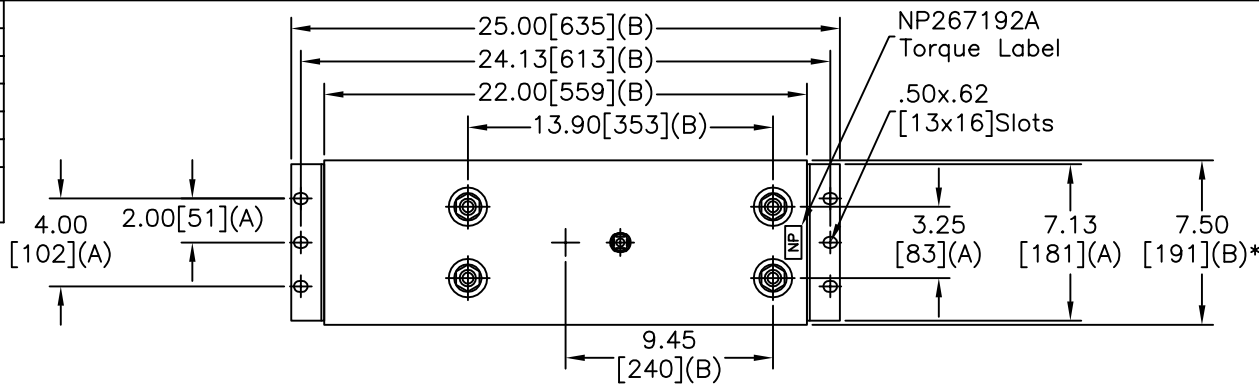


SIZE A	DWG NO 19L0732WH4	SHT 2	REV
REV	DESCRIPTION	DATE	APPROVED
			BTR

TOL	+/-
A	.06
B	.12
C	.18
D	.50
E	.04
BUSH. DIA.	1.75[44](B)



GE CAPACITOR
WITH INTERNAL DISCHARGE RESISTORS

CAT. 19L0732WH4 SN
4000KVAR 2200V 300HZ 1PH
438.4UF
6.2 GAL. COMBUSTIBLE LIQUID
CAUTION! BEFORE INSTALLING OR
OPERATING READ GEH-2733

MADE IN U.S.A. NP267214

* UP TO +.75[19]
CASE BULGE

MAX. TERMINAL
TIGHTENING TORQUE
15 FT-LBS.

NP267192A

GE ENERGY FORT EDWARD, N.Y., U.S.A.	SIZE A	Est Weight 210 lbs.	OUTLINE 19L0732WH4	
	SCALE			
DRAWN BRoss ISSUED	DATE 10/7/2013 DATE 10/7/2013	WC1		

DISTR. TO