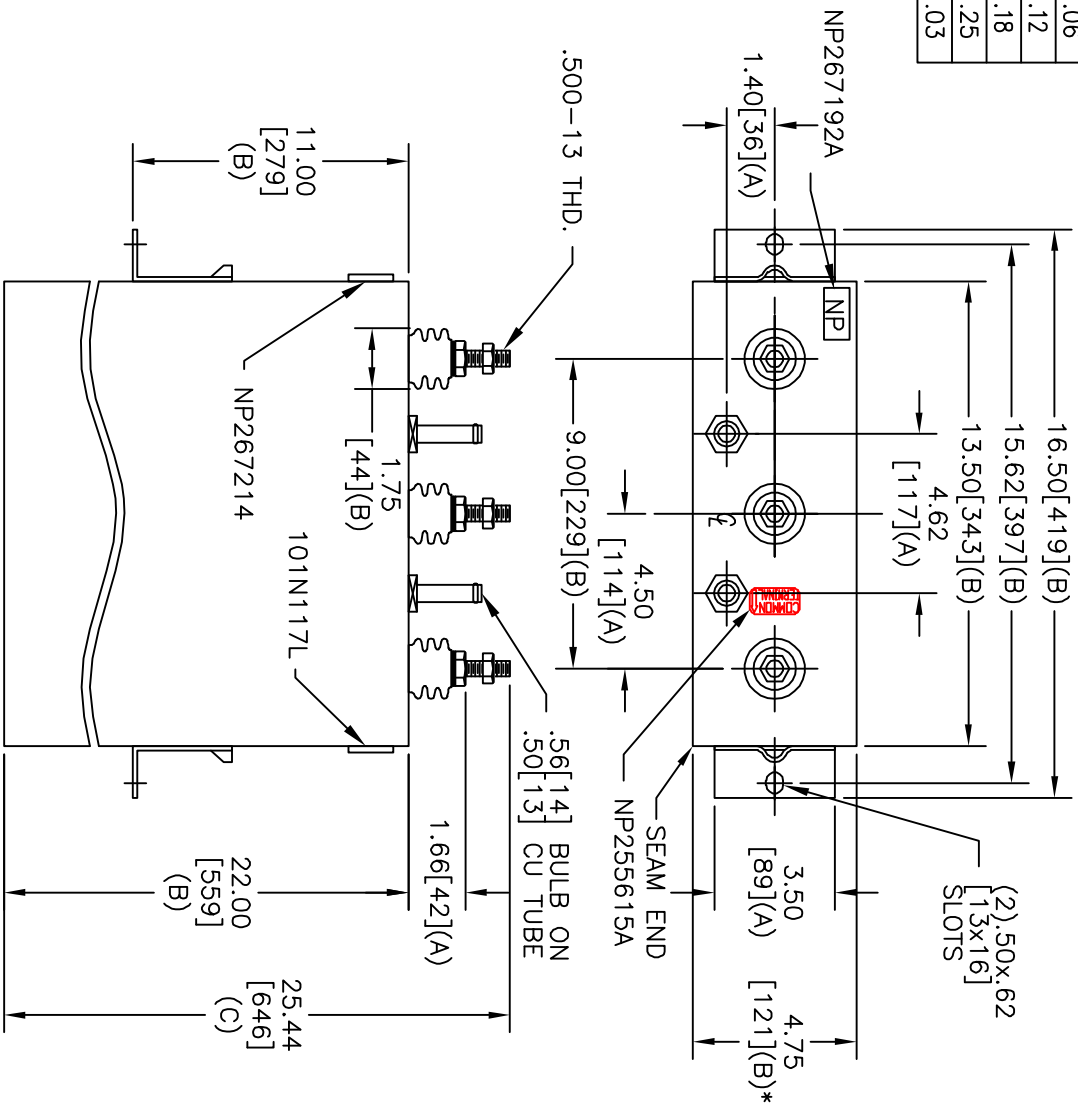
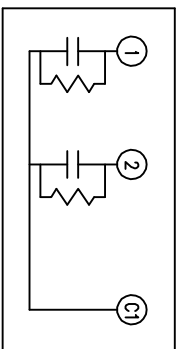


TOL	+/-
A	.06
B	.12
C	.18
D	.25
E	.03



TERM	UF	KVAR
1	126.17	100
2	126.17	100



SCHEMATIC DIAGRAM - 212

WITH INTERNAL DISCH RESISTORS  
 CAT. 19L0733WH3 SN  
 200KVAR 1450V 60HZ 1PH  
 2x 126.2UF/TAP  
 2.4 GAL. COMBUSTIBLE LIQUID  
 CAUTION! BEFORE INSTALLING OR  
 OPERATING READ GEH-2733

NP267214

\* UP TO +.50 [13]  
 CASE BULGE

MAX. TERMINAL  
 TIGHTENING TORQUE  
 15 FT-LBS

NP267192A

SIZE	DWG. NO.	SHT	REV
A	19L0733WH3	2	2
REV	DESCRIPTION	DATE	APPROVED
2	101N117L WAS J	5/14/2007	BTR

GE ENERGY  
 FORT EDWARD, N.Y., U.S.A.

DRAWN COLE

ISSUED DATE 2/17/1998  
 DATE 2/18/1998

SIZE A

SCALE

OUTLINE  
 19L0733WH3

SHEET 2 CONT 3

DISTR. TO