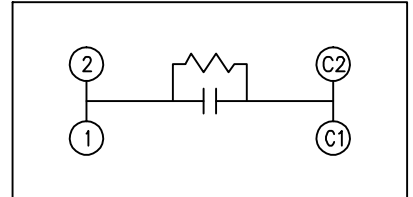
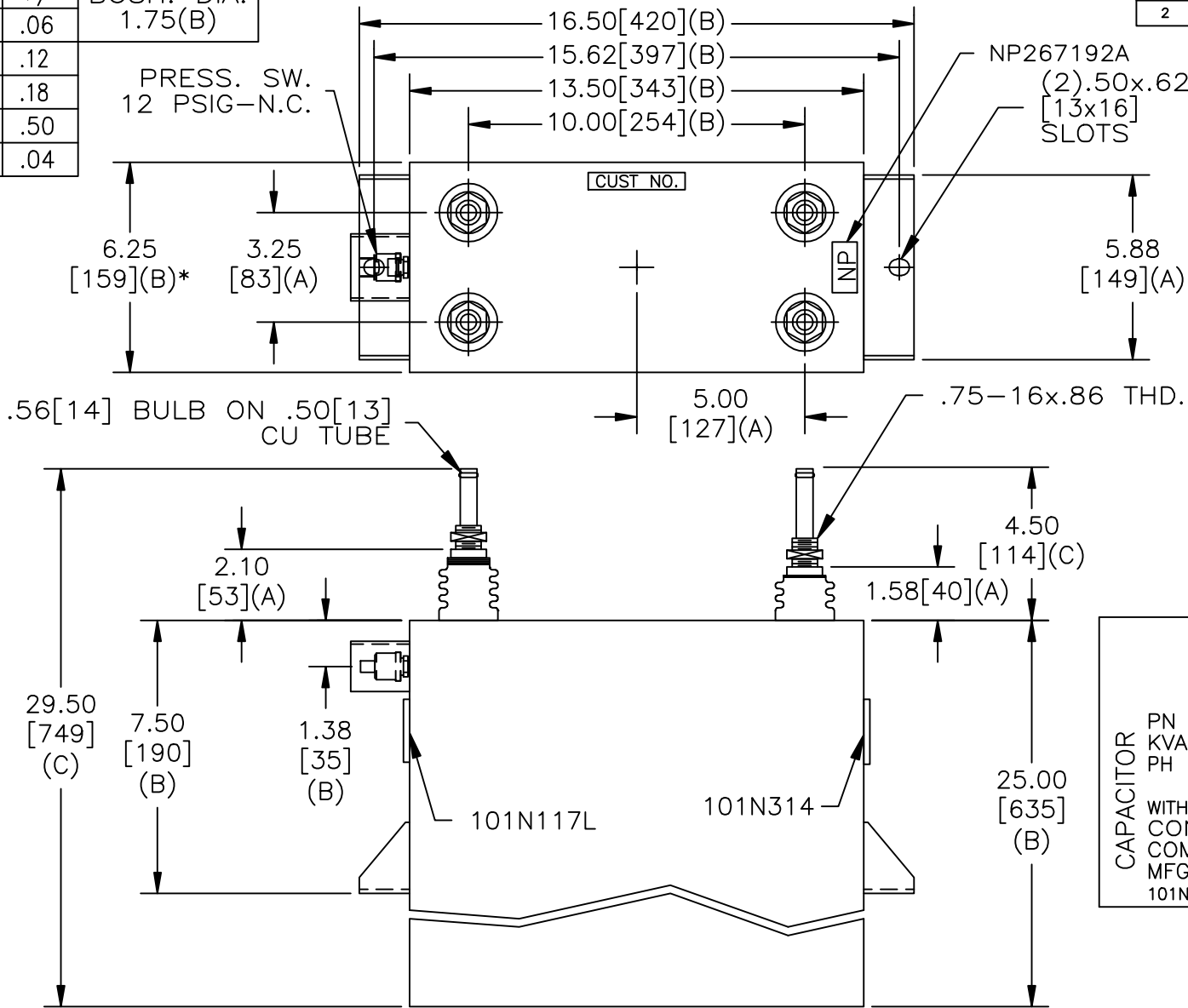


SIZE A	DWG NO 19L0747WH4	SHT 2	REV 2
REV 2	DESCRIPTION CHG NP	DATE 5/19/2009	APPROVED BTR

TOL	+/-	BUSH. DIA.
A	.06	1.75(B)
B	.12	
C	.18	
D	.50	
E	.04	



SCHEMATIC DIAGRAM - 107

ABP INDUCTION

PN GES 9 506058P0001 SN
 KVAR 3272 VOLTS 2000 HZ 600
 PH 1 NO.TAPS 1 UF/TAP 217

WITH INTERNAL DISCH RESISTORS
 CONTAINS 3.04 GALS. NO PCB
 COMBUSTIBLE FLUID. OSHA CLASS III-B
 MFGDATE MMM YY
 101N314 MADE IN USA

ABP INDUCTION PN GES 9 506058P0001
 3272KVAR 2000V 600Hz

* UP TO +.50[13] CASE BULGE

MAX. TERMINAL TIGHTENING TORQUE 15 FT-LBS

NP267192A

GE ENERGY FORT EDWARD, N.Y., U.S.A.	SIZE A	UNIT WEIGHT 98 / 45 LB/KG	OUTLINE 19L0747WH4	DISTR. TO
	DRAWN E. McGinn ISSUED			