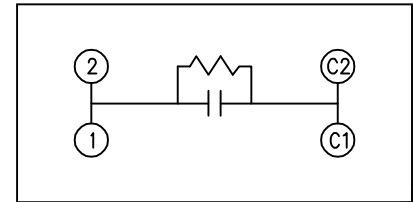
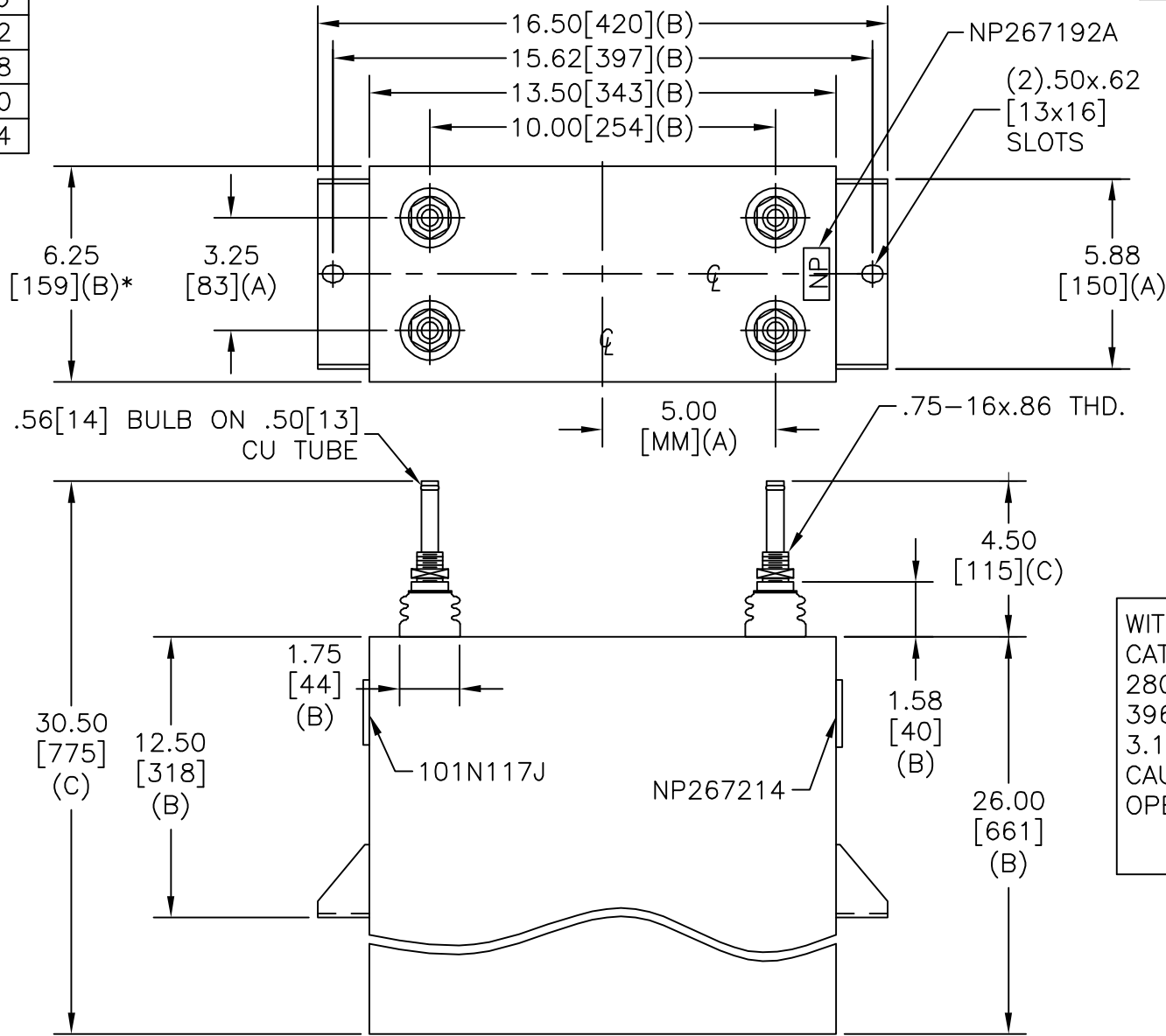


SIZE A	DWG NO 19L0767WH3	SHT 2	REV 1
REV 1	DESCRIPTION UPDATE CAT NO.	DATE 2/16/05	APPROVED BTR

TOL	+/-
A	.06
B	.12
C	.18
D	.50
E	.04



SCHEMATIC DIAGRAM - 107

WITH INTERNAL DISCH RESISTORS  
 CAT. 19L0767WH3 SN  
 2800KVAR 1500V 500HZ 1PH  
 396.1 UF  
 3.1 GAL. COMBUSTIBLE LIQUID  
 CAUTION! BEFORE INSTALLING OR  
 OPERATING READ GEH-2733

NP267214

\* UP TO +.50 [13]  
 CASE BULGE

MAX. TERMINAL  
 TIGHTENING TORQUE  
 15 FT-LBS

NP267192A

INDUSTRIAL SYSTEMS FORT EDWARD, N.Y., U.S.A.		SIZE A
DRAWN EPC	DATE AUG 29, 1996	SCALE
ISSUED	DATE 9/4/96	

OUTLINE  
 19L0767WH3

SHEET 2 CONT ON 3

DISTR. TO