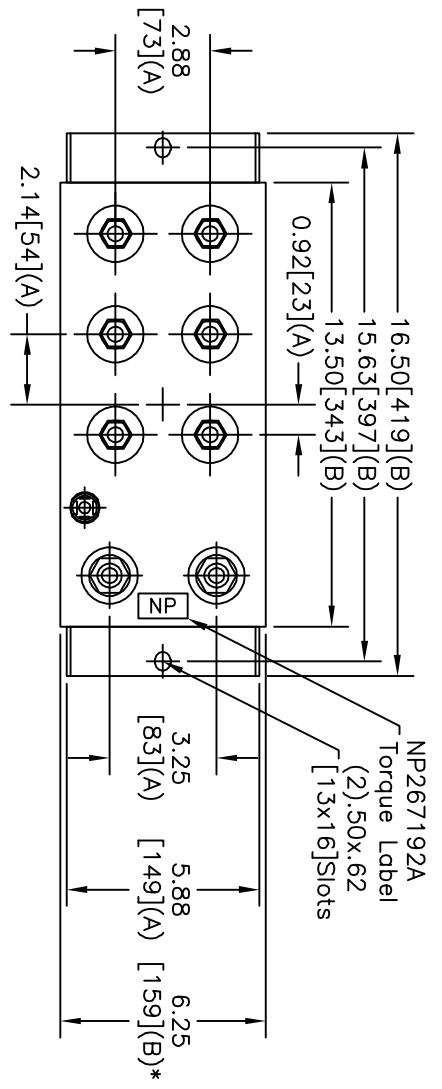
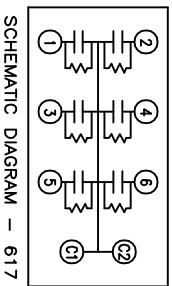
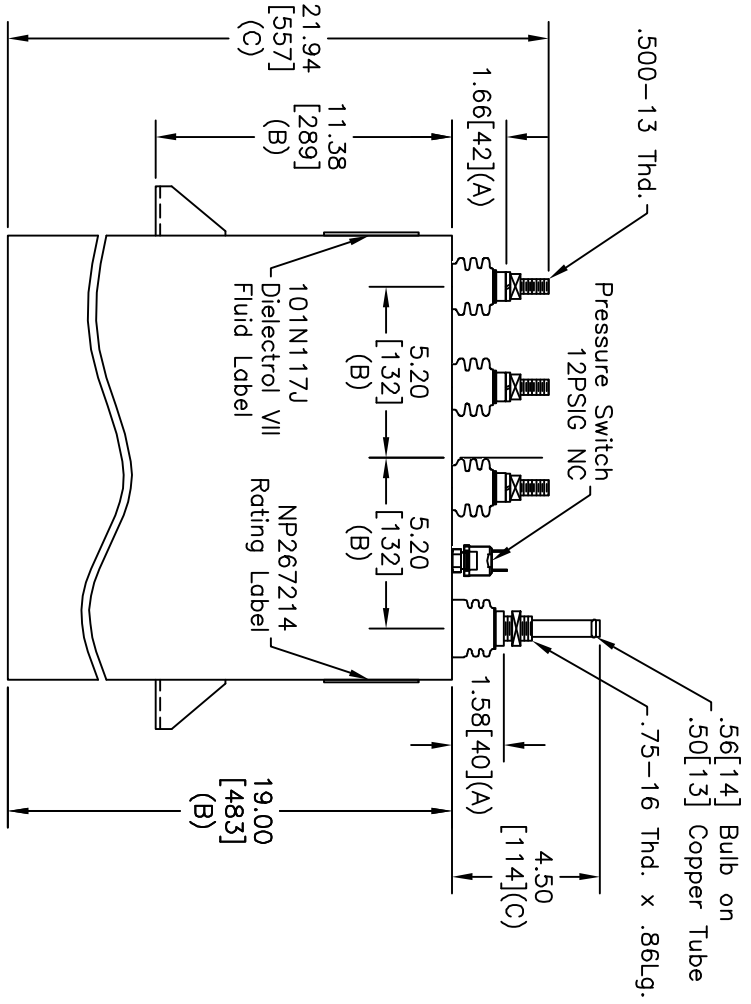


TOL	+/-
A	.06
B	.12
C	.18
D	.50
E	.04
BUSH, DIA.	1.75[.44](B)



TERM	UF	KVAR
1	22.93	65
2	22.93	65
3	45.86	130
4	45.86	130
5	68.79	194
6	68.79	194



WITH INTERNAL DISCH RESISTORS
 CAT. 19L0770WH4 SN
 778KVAR 1500V 200HZ 1PH
 2x22.93+2x45.86+2x68.79UF/TAP
 2.36 GAL. COMBUSTIBLE LIQUID
 CAUTION! BEFORE INSTALLING OR
 OPERATING READ GEH-2733
 MADE IN USA NP267214

* UP TO +.50[13]
 CASE BULGE

MAX. TERMINAL
 TIGHTENING TORQUE
 15 FT-LBS.
 NP267192A

GE ENERGY FORT EDWARD, N.Y., U.S.A.		SIZE	A	SCALE	WC6	SHEET	2	CONT	3	
		DRAWN								EPC
ISSUED		DATE	9/18/1996							

REV	DESCRIPTION	DATE	APPROVED
1	UPDATE CAT NO.	1/4/2006	BTR

SIZE	DWG NO	SHT	REV
A	19L0770WH4	2	1

OUTLINE

19L0770WH4