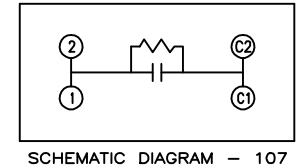
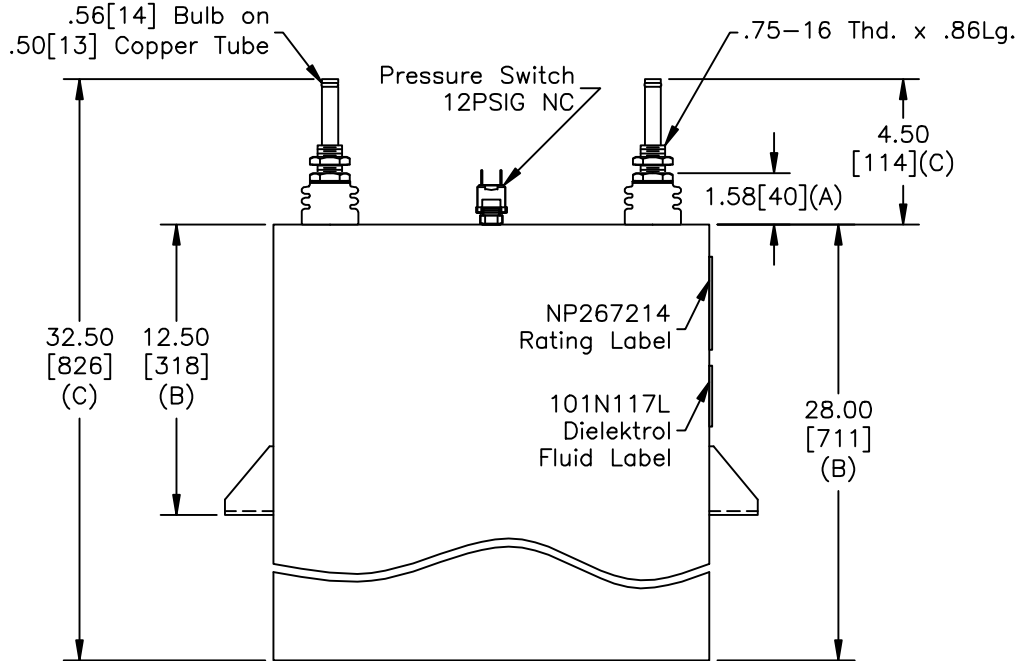
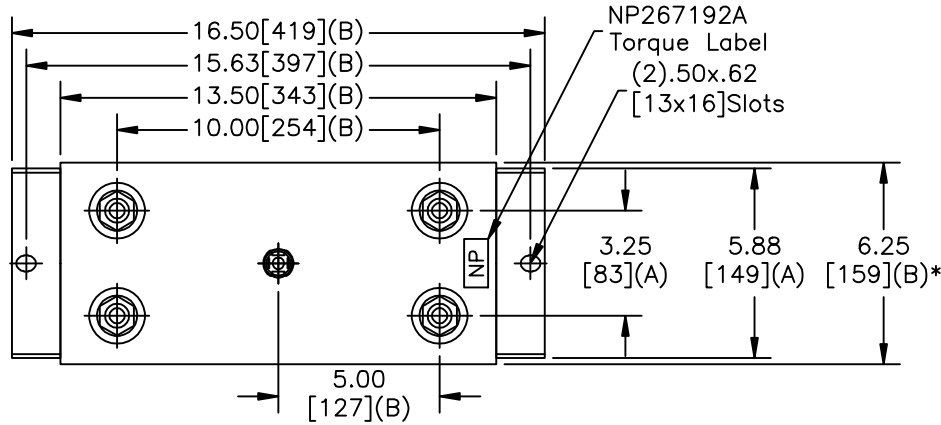


SIZE A	DWG NO 19L0780WH4	SHT 2	REV 5
REV 5	DESCRIPTION BUSHING SPACING WAS 2.88	DATE 3/31/2009	APPROVED BTR

TOL	+/-
A	.06
B	.12
C	.18
D	.50
E	.04
BUSH. DIA. 1.75[44](B)	



GE CAPACITOR
WITH INTERNAL DISCHARGE RESISTORS

CAT. 19L0780WH4 SN
3200KVAR 1800V 500HZ 1PH
314.38 UF
3.27 GAL. COMBUSTIBLE LIQUID
CAUTION! BEFORE INSTALLING OR
OPERATING READ GEH-2733

MADE IN USA NP267214

* UP TO +.50[13] CASE BULGE

MAX. TERMINAL TIGHTENING TORQUE 15 FT-LBS.

NP267192A

GE ENERGY FORT EDWARD, N.Y., U.S.A.		SIZE A	Est Weight 111 lbs.	OUTLINE 19L0780WH4		DISTR. TO
DRAWN EPC	DATE 11/7/1996	SCALE	WC1			
ISSUED	DATE 11/20/1996					