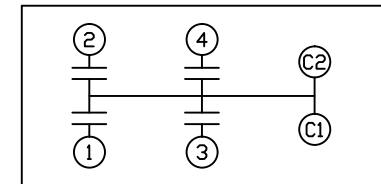
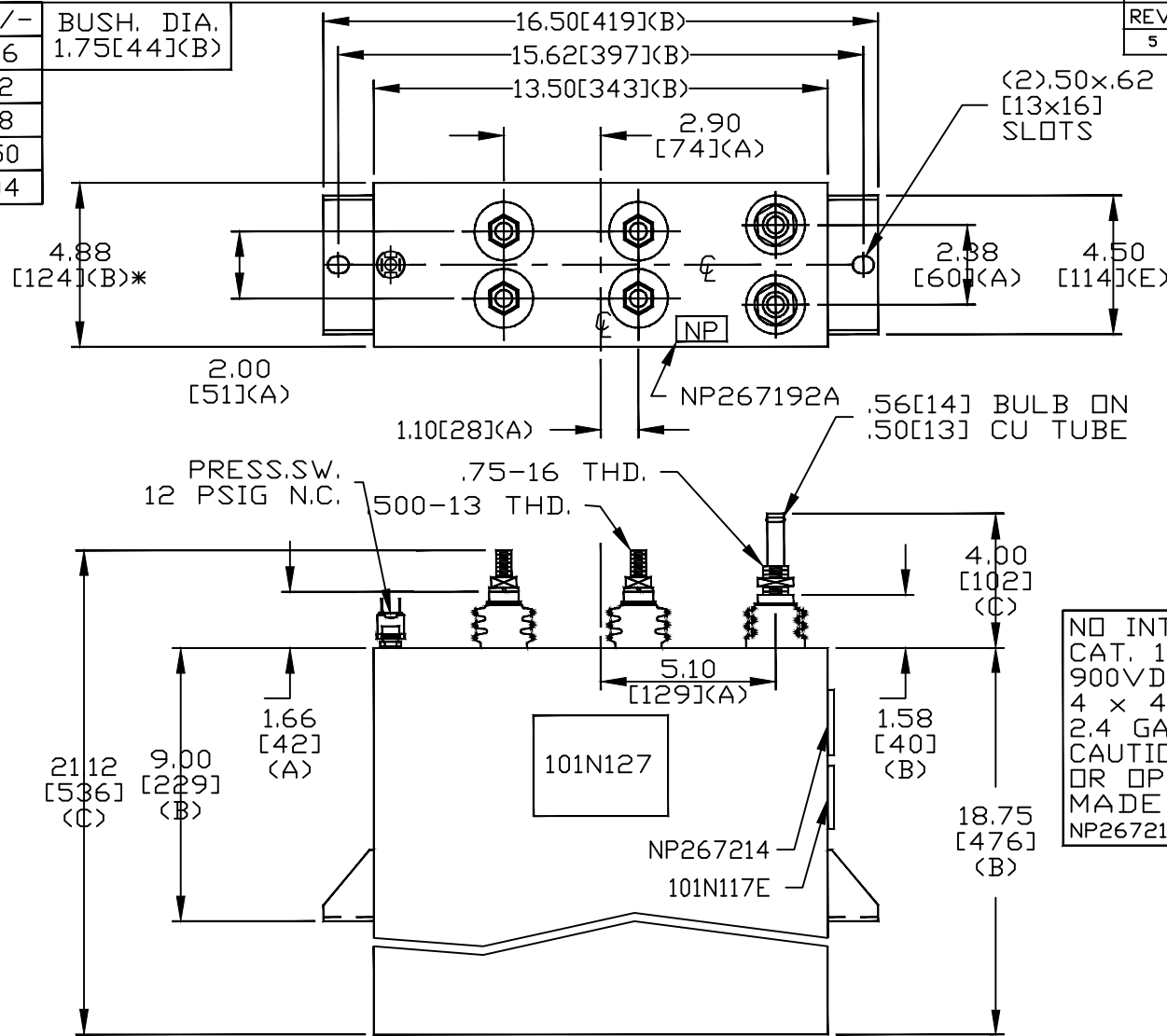


SIZE A	DWG NO 19L0825TJ4	SHT 2	REV 5
REV 5	DESCRIPTION MADE IN USA	DATE 8/8/2012	APPROVED JBC

TOL	+/-	BUSH, DIA.
A	.06	1.75[44]
B	.12	
C	.18	
D	.50	
E	.04	

TERM	uF
1	410
2	410
3	410
4	410



SCHEMATIC DIAGRAM - 420

NO INTERNAL DISCH RESISTORS
 CAT. 19L0825TJ4 SN
 900VDC 1640UF 1140AMPS
 4 x 410 UF/TAP
 2.4 GAL. COMBUSTIBLE LIQUID
 CAUTION! BEFORE INSTALLING
 OR OPERATING READ GEH-2733
 MADE IN USA
 NP267214

* UP TO +.50[13]
 CASE BULGE

MAX. TERMINAL
 TIGHTENING TORQUE
 15 FT-LBS
 NP267192A

GE ENERGY FORT EDWARD, N.Y., U.S.A.		SIZE A	<h1>OUTLINE</h1> <h2>19L0825TJ4</h2>	
DRAWN W. DeGroff ISSUED	DATE 5/30/1991 DATE 5/30/1991	SCALE		
SHEET 2 CONT ON 3			DISTR. TO	