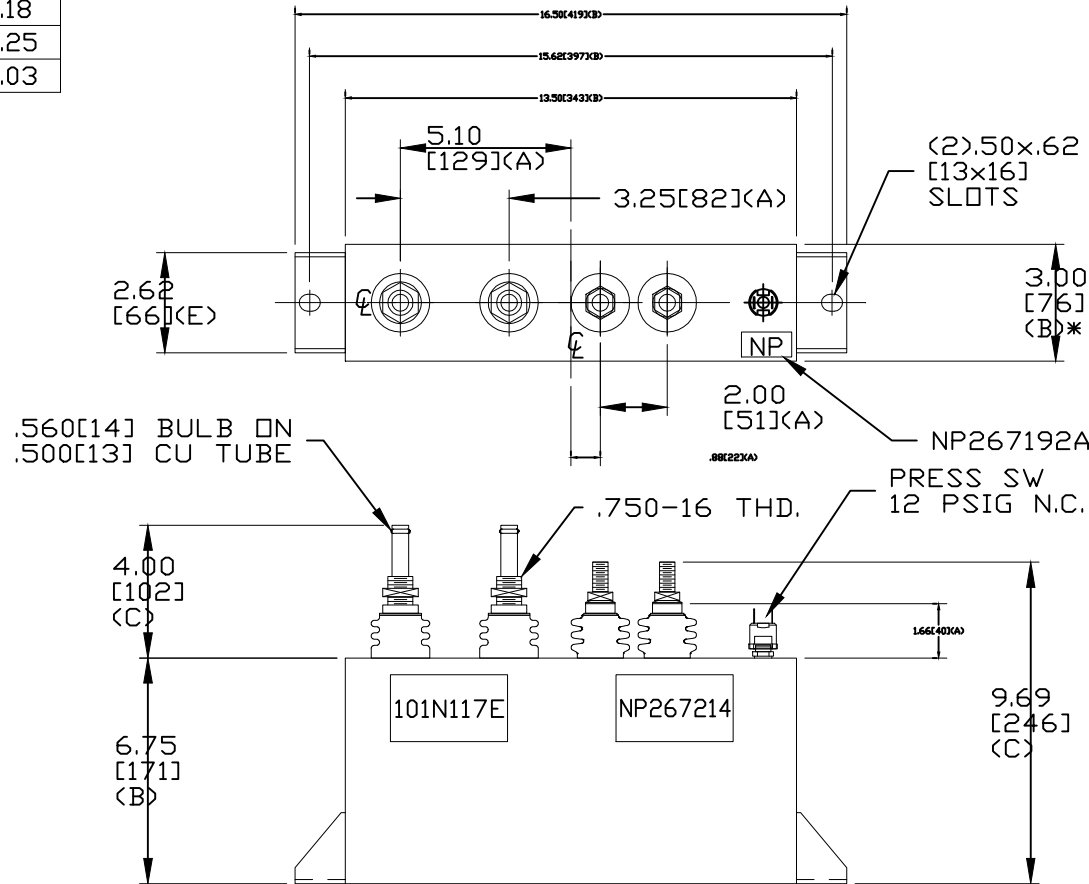
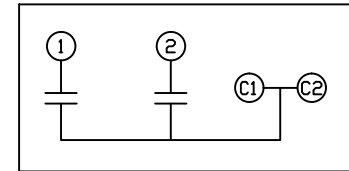


TOL	+/-	BUSH.DIA.
A	.06	1.75[44](A)
B	.12	
C	.18	
D	.25	
E	.03	

SIZE A	DWG NO 19L0827TH4	SHT 2	REV 3
REV 3	DESCRIPTION UPDATE 101N17 NP	DATE 11/28/11	APPROVED DMR



TERM	uF
1	150
2	150



SCHEMATIC DIAGRAM - 230

GE CAPACITOR
 NO INTERNAL DISCHARGE RESISTORS
 CAT. 19L0827TH4 SN
 700VDC 300UF 400ARMS
 2x150UF/TAP
 0.58 GAL. COMBUSTIBLE LIQUID
 CAUTION! BEFORE INSTALLING OR
 OPERATING READ GEH
 MADE IN U.S.A. NP267214

* UP TO +.50 [13] CASE BULGE

MAX. TERMINAL TIGHTENING TORQUE
 15 FT-LBS
 NP267192A

GE ENERGY FORT EDWARD, N.Y., U.S.A.		SIZE A
DRAWN W.DeGROFF	DATE 4/16/1991	SCALE
ISSUED	DATE 4/22/1991	

OUTLINE
 19L0827TH4

SHEET 2 CONT ON 3

DISTR. TO