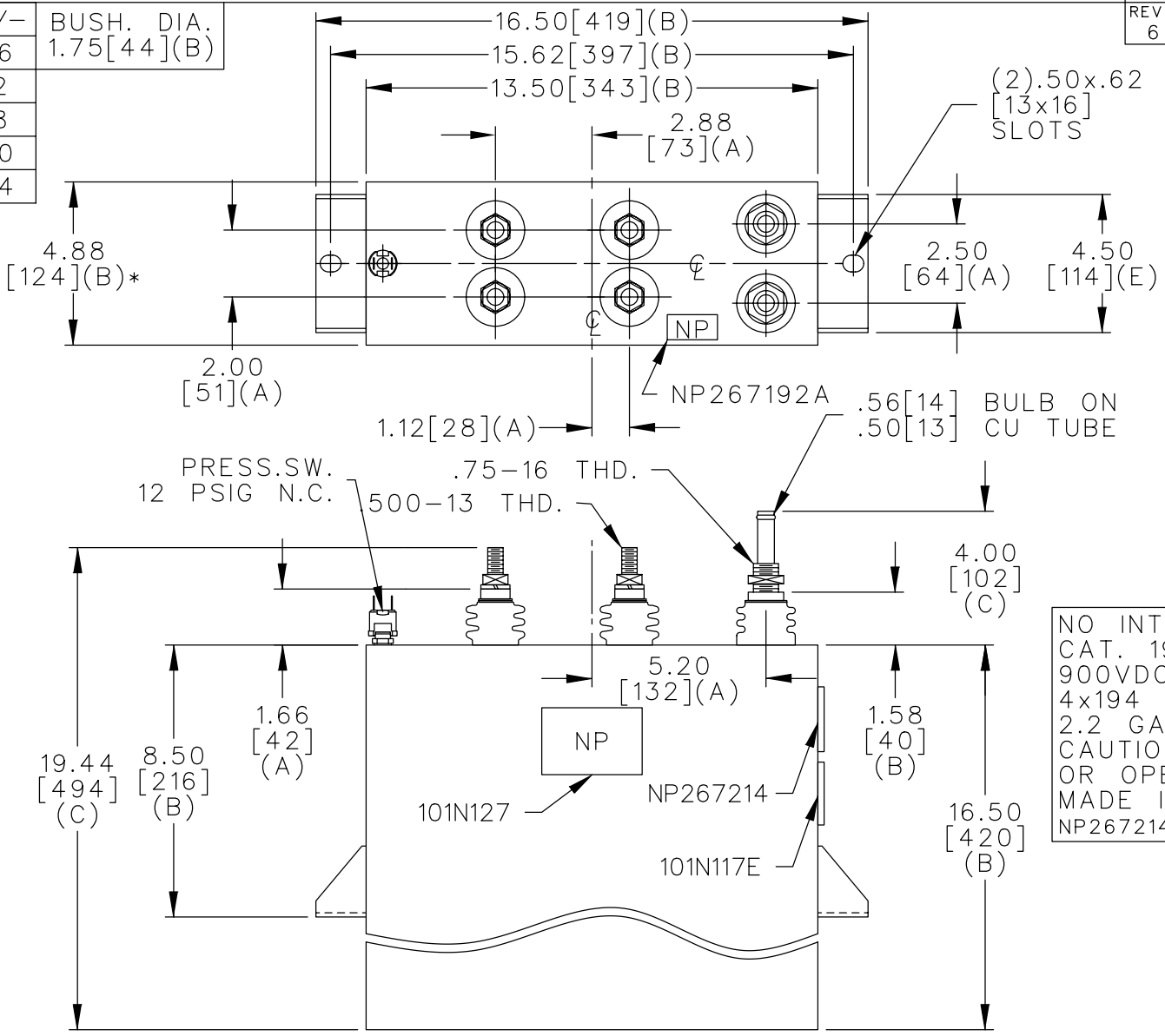
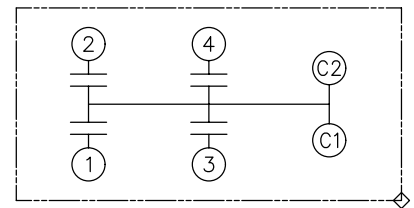


TOL	+/-	BUSH. DIA.
A	.06	1.75[44](B)
B	.12	
C	.18	
D	.50	
E	.04	



TERM	uF
1	194
2	194
3	194
4	194



SCHEMATIC DIAGRAM - 420

NO INTERNAL DISCH RESISTORS
 CAT. 19L0848TH4 SN
 900VDC 780UF 1200AMPS
 4x194 UF/TAP
 2.2 GAL. COMBUSTIBLE LIQUID
 CAUTION! BEFORE INSTALLING
 OR OPERATING READ GEH-2733
 MADE IN MEXICO
 NP267214

* UP TO +.50[13]
 CASE BULGE

MAX. TERMINAL
 TIGHTENING TORQUE
 15 FT-LBS

NP267192A

	CAPACITOR & POWER PROTECTION FORT EDWARD, N.Y., U.S.A.		SIZE A	<h1>OUTLINE</h1> <h2>19L0848TH4</h2>	
	DRAWN HUMPHRIES	FEB. 7, 1991	SCALE		
ISSUED	4-29-91	SHEET 2	CONT. ON 3	DISTR TO	