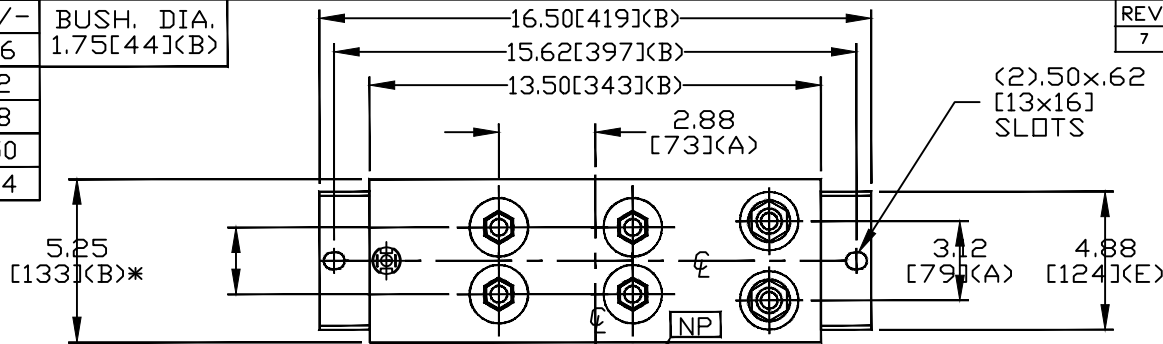


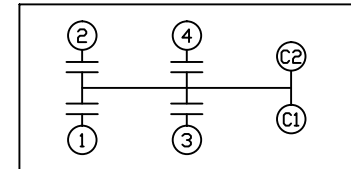
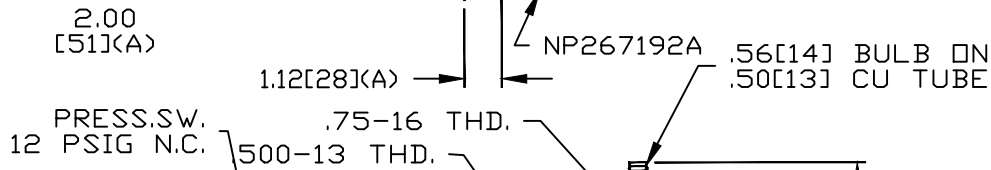
TOL	+/-	BUSH. DIA.
A	.06	1.75[44](B)
B	.12	
C	.18	
D	.50	
E	.04	

SIZE A	DWG NO 19L0851TH4	SHT 2	REV 7
REV 7	DESCRIPTION CORRECT CASE HT	DATE 12/1/2011	APPROVED DMR

TERM	uF
1	150
2	150
3	150
4	150



(2) .50x.62
[13x16]
SLOTS



SCHEMATIC DIAGRAM - 420

NO INTERNAL DISCH RESISTORS
CAT. 19L0851TH4 SN
900VDC 600UF 750AMPS
4x150 UF/TAP
1.7 GAL. COMBUSTIBLE LIQUID
CAUTION! BEFORE INSTALLING
OR OPERATING READ GEH-2733
MADE IN MEXICO
NP267214

* UP TO +.50[13]
CASE BULGE

MAX. TERMINAL
TIGHTENING TORQUE
15 FT-LBS
NP267192A

GE ENERGY FORT EDWARD, N.Y., U.S.A.		SIZE A
DRAWN W. DeGROFF	DATE 10/10/1990	SCALE
ISSUED	DATE 10/11/1990	

OUTLINE
19L0851TH4

SHEET 2 CONT ON 3

DISTR. TO