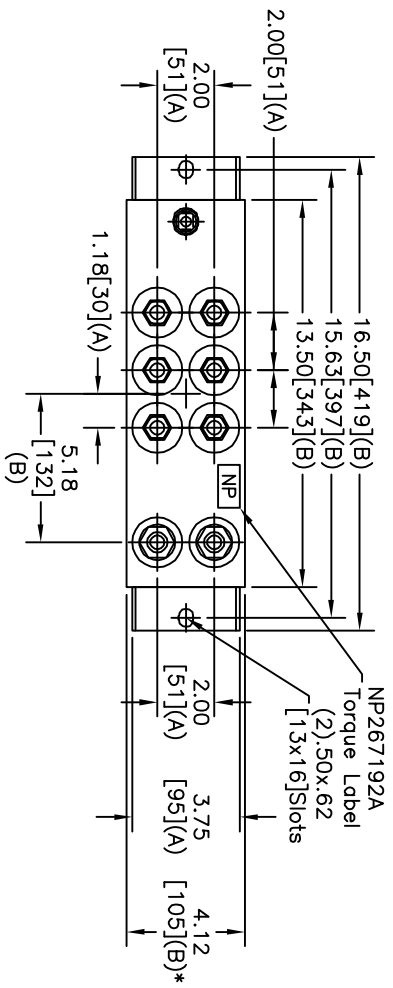
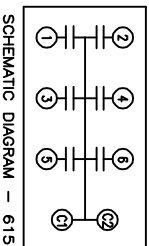
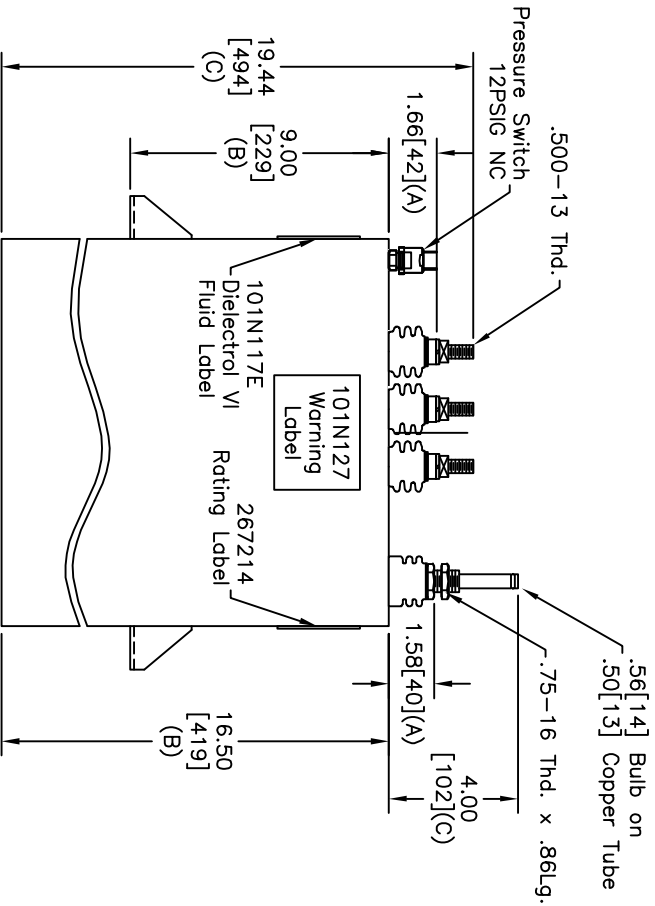


| TOL | +/- |
|-----------|-------------|
| A | .06 |
| B | .12 |
| C | .18 |
| D | .50 |
| E | .04 |
| BUSH, DIA | 1.75[44](B) |



| TERM | UF |
|------|-------|
| 1 | 141.7 |
| 2 | 141.7 |
| 3 | 141.7 |
| 4 | 141.7 |
| 5 | 141.7 |
| 6 | 141.7 |



NO INTERNAL DISCH RESISTORS
 CAT. 19L0855TH4 SN
 900VDC 850UF 1000ARMS
 141.7 UF/TAP
 1.9 GAL. COMBUSTIBLE LIQUID
 CAUTION! BEFORE INSTALLING OR
 OPERATING READ GEH-2733
 NP267214

* UP TO +.50[13]
 CASE BULGE

MAX. TERMINAL
 TIGHTENING TORQUE
 15 FT-LBS.
 NP267192A

| SIZE | DWG NO | SHT | REV |
|------|----------------------------|----------|----------|
| A | 19L0855TH4 | 2 | 6 |
| REV | DESCRIPTION | DATE | APPROVED |
| 6 | DEL EXTRA TERMS & CHG DIMS | 2/7/2007 | BTR |

| | | | |
|---|------------|-------|------------|
| GE ENERGY FORT EDWARD, N.Y., U.S.A. | | SIZE | A |
| | | SCALE | WC15 |
| DRAWN | W. Degroff | DATE | 10/10/1990 |
| ISSUED | | DATE | 10/11/1990 |
| OUTLINE 19L0855TH4 | | SHEET | 2 |
| | | CONT | 3 |

DISTR. TO