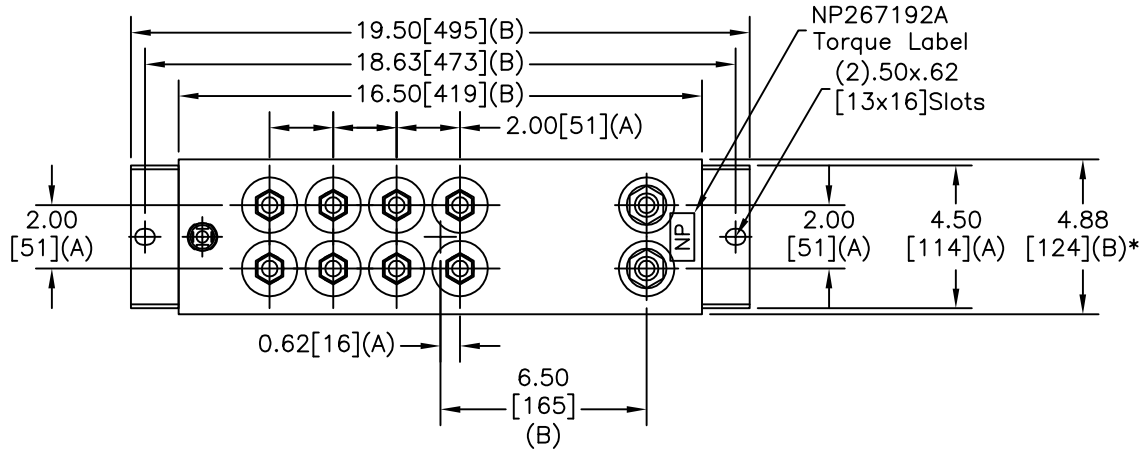
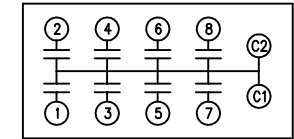
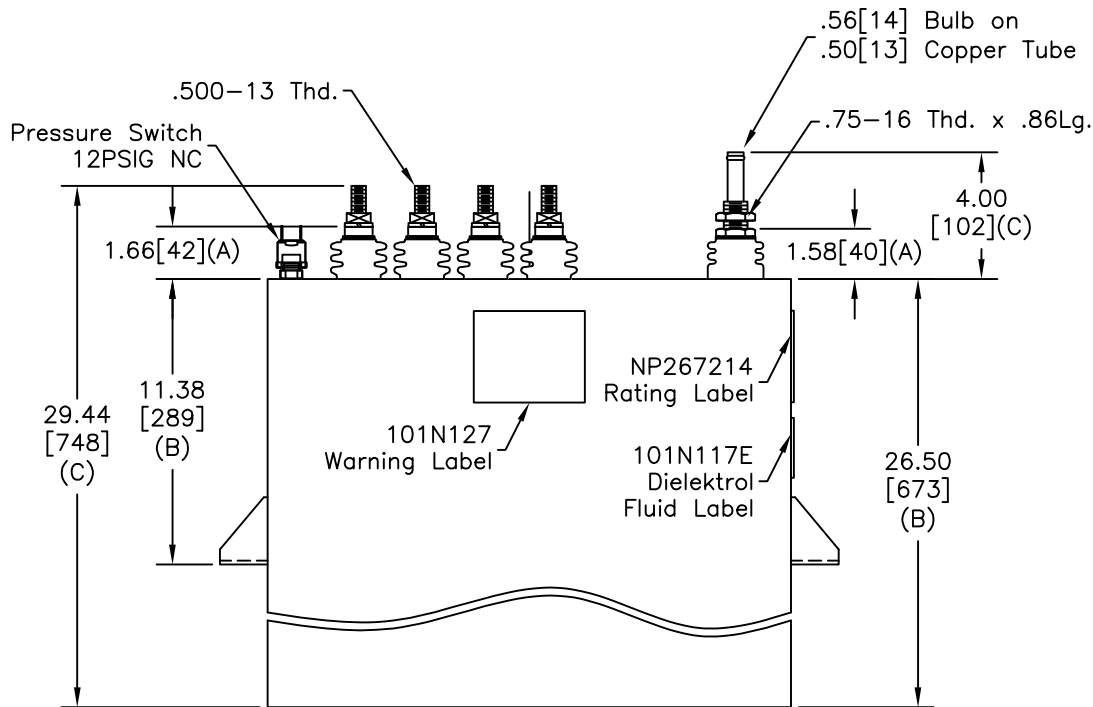


SIZE A	DWG NO 19L0857TH4	SHT 2	REV 4
REV 4	DESCRIPTION CHG COILHT	DATE 8/22/2013	APPROVED BTR

TOL	+/-
A	.06
B	.12
C	.18
D	.50
E	.04
BUSH. DIA.	1.75[44](B)



TERM	uF	kVAR
1	412.5	0
2	412.5	0
3	412.5	0
4	412.5	0
5	412.5	0
6	412.5	0
7	412.5	0
8	412.5	0



SCHEMATIC DIAGRAM - 800

**GE CAPACITOR**  
NO INTERNAL DISCHARGE RESISTORS  
CAT. 19L0857TH4 SN  
900VDC 3300UF 2600ARMS MAX.  
8x412.5UF/TAP  
4.35 GAL. COMBUSTIBLE LIQUID  
CAUTION! BEFORE INSTALLING OR  
OPERATING READ GEH-2733  
MADE IN USA NP267214

\* UP TO +.50[13] CASE BULGE

MAX. TERMINAL TIGHTENING TORQUE 15 FT.-LBS.

NP267192A

<b>GE ENERGY</b> FORT EDWARD, N.Y., U.S.A.	SIZE A	Est Weight 120 lbs.	<b>OUTLINE</b> <b>19L0857TH4</b>	
	DRAWN McGinn ISSUED			

DISTR. TO