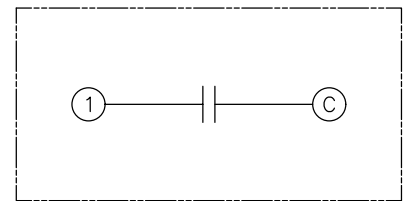
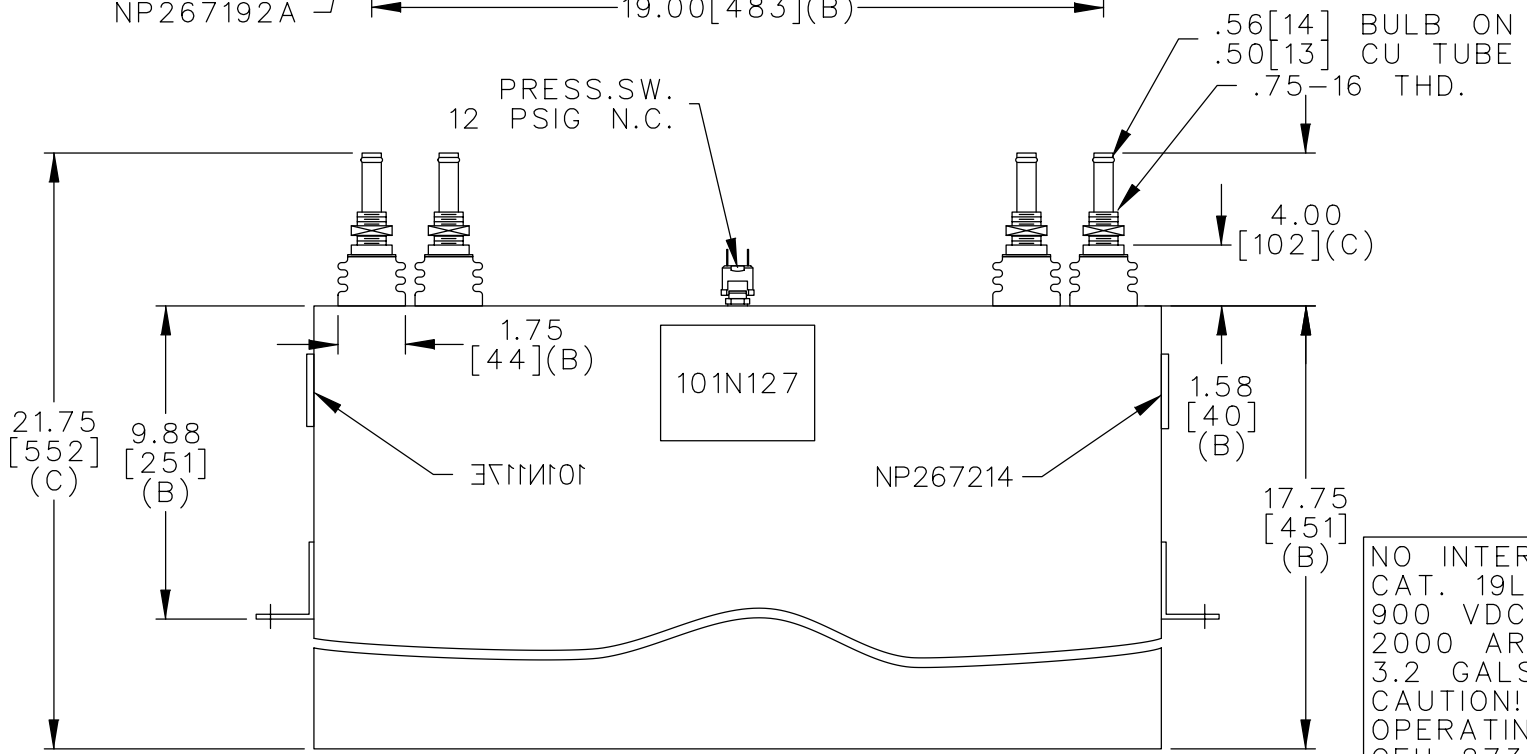
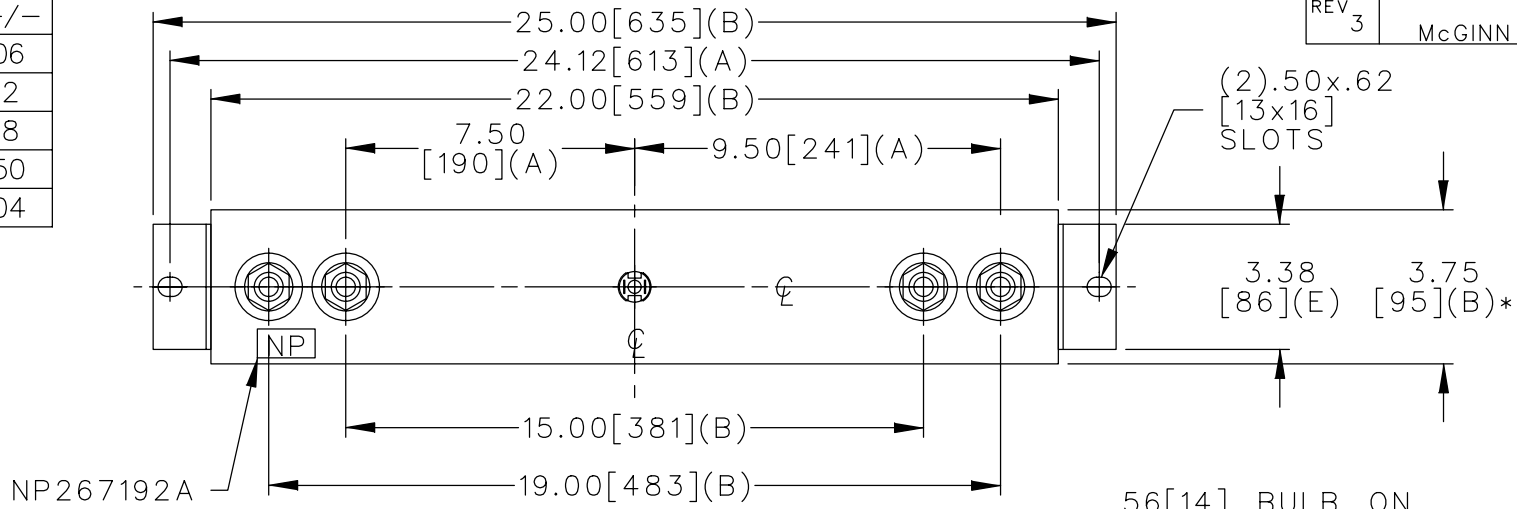


TOL	+/-
A	.06
B	.12
C	.18
D	.50
E	.04



SCHEMATIC DIAGRAM - 100

NO INTERNAL DISCH RESISTORS
 CAT. 19L0868WH4 SN
 900 VDC 1500 UF
 2000 ARMS MAX.
 3.2 GALS. COMBUSTIBLE LIQUID
 CAUTION! BEFORE INSTALLING OR
 OPERATING READ GEH-2733 +
 GEH-2739
 NP267214

* UP TO +.75 [19] CASE BULGE

MAX. TERMINAL TIGHTENING TORQUE 15 FT-LBS

NP267192A

	CAPACITOR & POWER PROTECTION FORT EDWARD, N.Y., U.S.A.		SIZE A	OUTLINE 19L0868TH4		SHEET 2 CONT. 3	DISTR TO
	DRAWN P.HUMPHRIES JAN. 7, 1991	ISSUED 1-10-91					