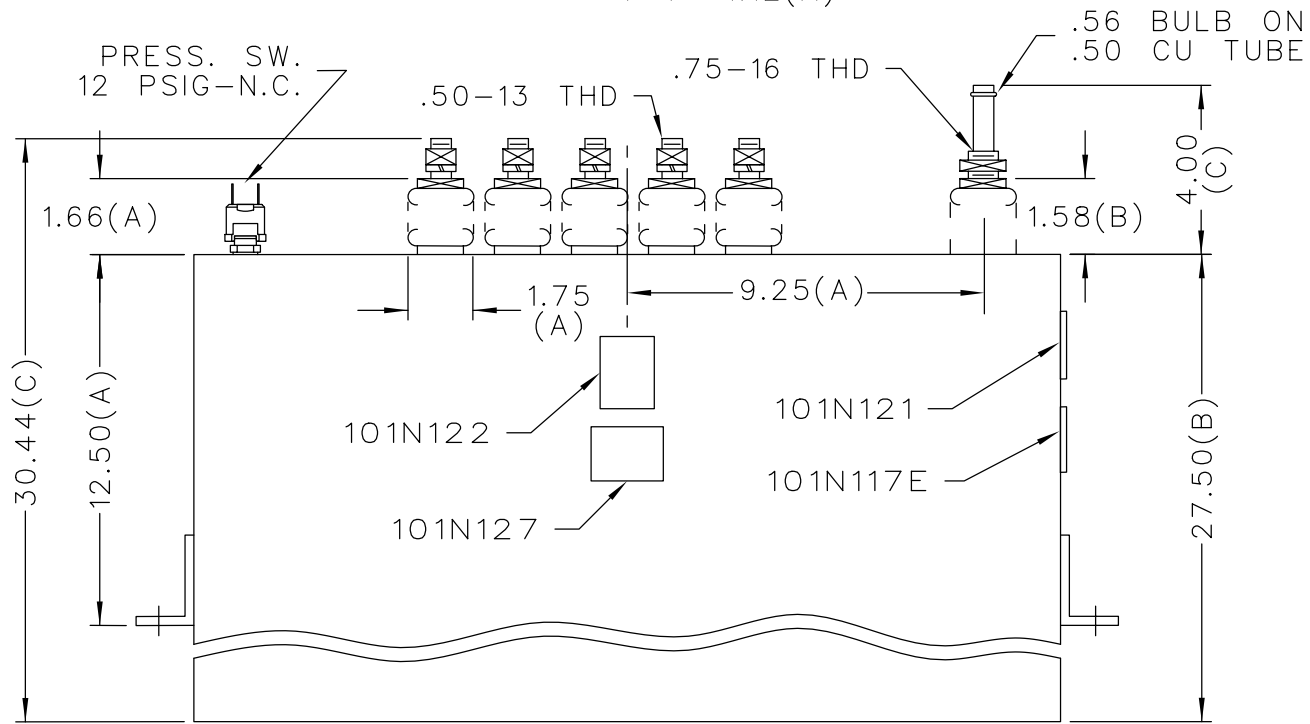


* UP TO .50" CASE BULGE



TOL	+/-
A	.06
B	.12
C	.18
D	.50
E	.04

TERM.	μF
1	167.5
2	167.5
3	167.5
4	167.5
5	167.5
6	167.5
7	167.5
8	167.5
9	167.5
10	167.5

IP # 168-0512 SER. NO.
 KVAR VOLTS 1800 DC HZ
 PH. 1 NO. TAPS 10 MFD/TAP 10 x 168
 1980 ARMS MAX 105 VRMS MAX
 NO INTERNAL DISCHARGE RESISTORS
 CONTAINS 6.50 GALS. NO PCB
 COMBUSTIBLE FLUID. OSHA CLASS III-B.
 101N121

MAX. TERMINAL
 TIGHTENING TORQUE
 15 FT-LBS
 NP267192

	CAPACITOR & POWER PROTECTION FORT EDWARD, N.Y., U.S.A.	
	DRAWN E.McGINN	SEPT. 14, 1992
ISSUED	SCALE	

SIZE A
SCALE

OUTLINE 19L878TF4	
SHEET 2	CONT. ON

DISTR TO