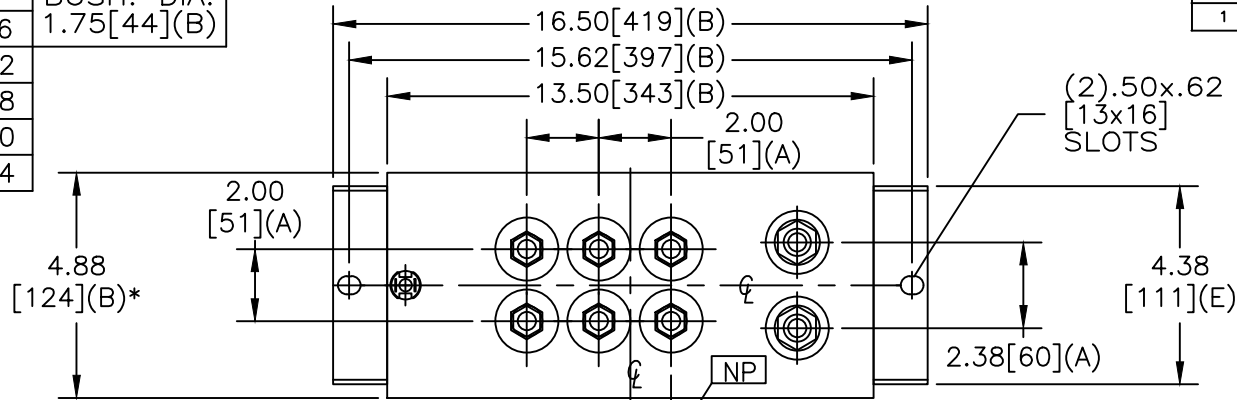


SIZE A	DWG NO 19L0880TH4	SHT 2	REV 1
REV 1	DESCRIPTION CHG NP TO USA	DATE 11/5/2012	APPROVED JBC

TOL	+/-	BUSH. DIA.
A	.06	1.75[44](B)
B	.12	
C	.18	
D	.50	
E	.04	

TERM	uF
1	250
2	250
3	250
4	250
5	250
6	250



(2).50x.62
[13x16]
SLOTS

NP

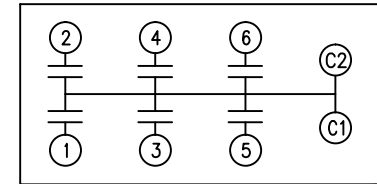
NP267192A

.56[14] BULB ON
.50[13] CU TUBE

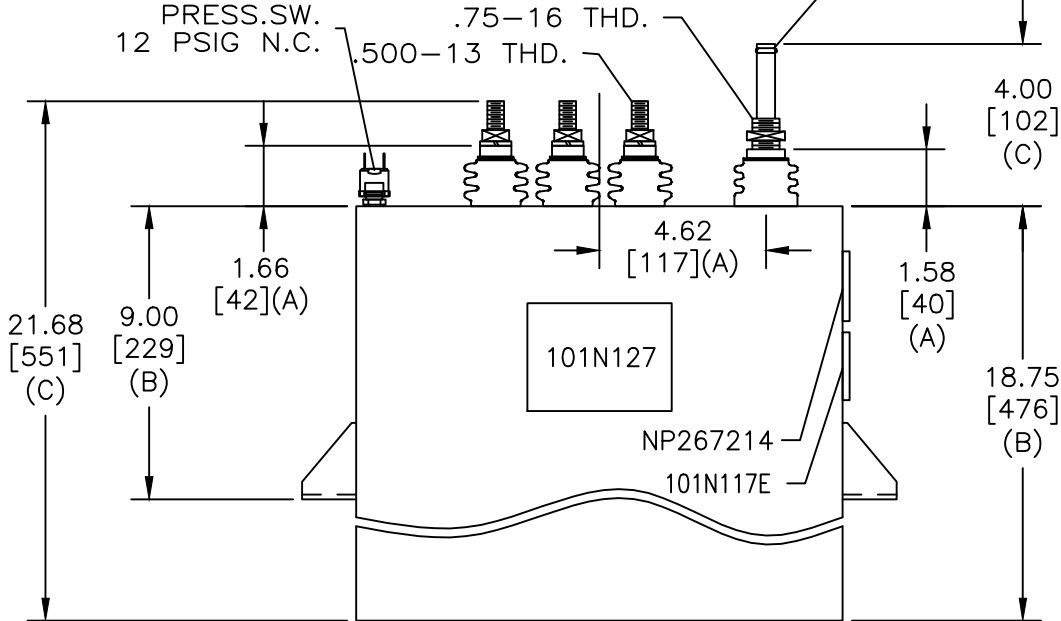
PRESS.SW.
12 PSIG N.C.

.75-16 THD.
.500-13 THD.

4.00
[102]
(C)



SCHEMATIC DIAGRAM - 615



NO INTERNAL DISCH RESISTORS
CAT. 19L0880TH4 SN
720VDC 10 KHZ MAX
6x250 UF/TAP
2.9 GAL. COMBUSTIBLE LIQUID
CAUTION! BEFORE INSTALLING OR
OPERATING READ GEH-2733 AND
GEH-2739
MADE IN USA
NP267214

* UP TO +.50[13]
CASE BULGE

MAX. TERMINAL
TIGHTENING TORQUE
15 FT-LBS

NP267192A

GE ENERGY FORT EDWARD, N.Y., U.S.A.		SIZE A
DRAWN B.ROSS	DATE JUL 17, 2002	SCALE
ISSUED	DATE 7/17/02	

OUTLINE
19L0880TH4

SHEET 2 CONT ON 3

DISTR. TO