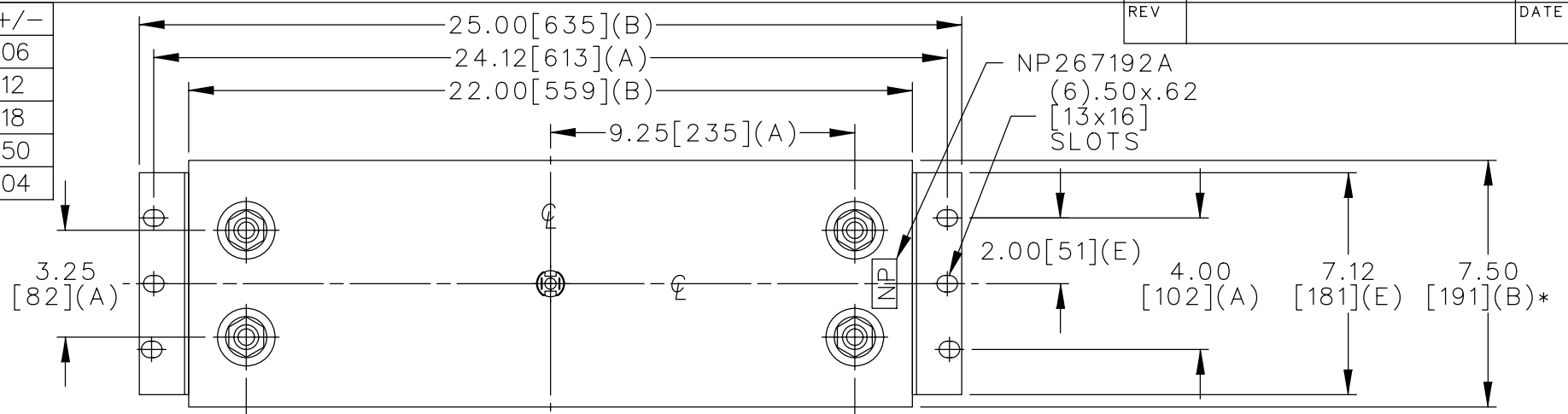
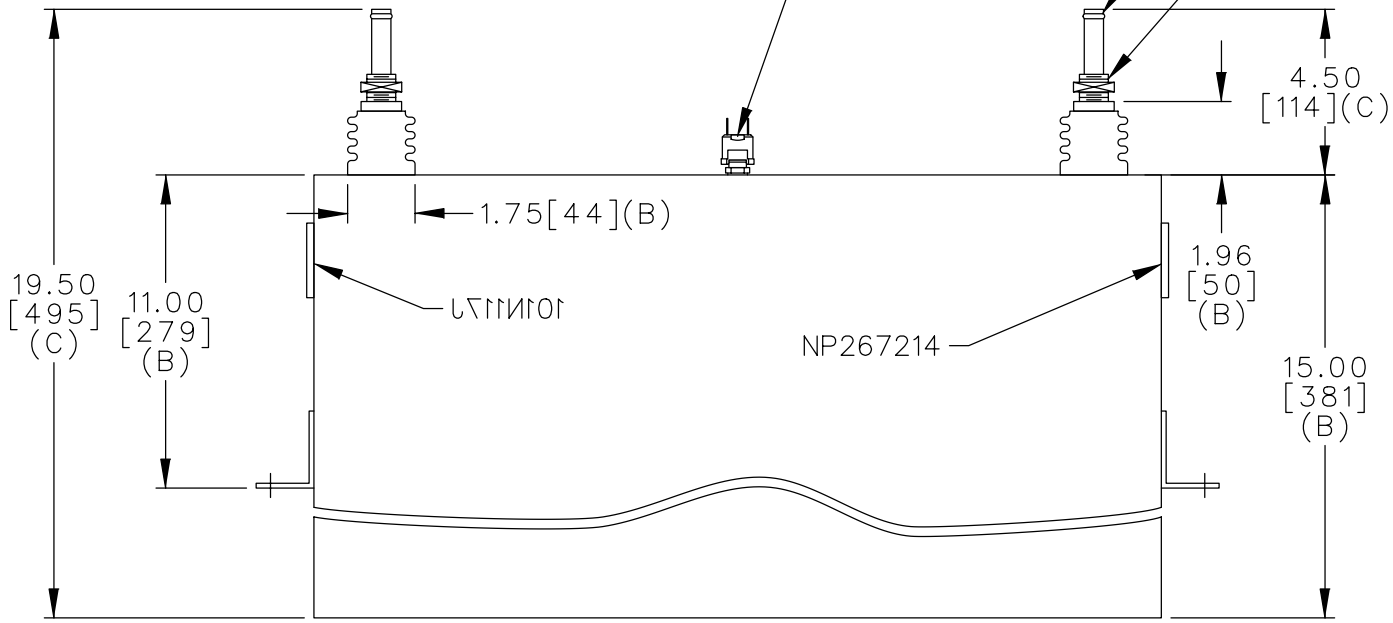
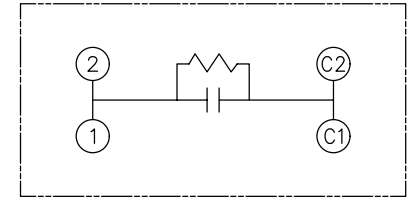


TOL	+/-
A	.06
B	.12
C	.18
D	.50
E	.04



PRESS.SW.  
12 PSIG N.C.

.56 [14] BULB ON  
.50 [13] CU TUBE  
.75-16 THD.



WITH INTERNAL DISCH RESISTORS  
 CAT. 19L0900WH4 SN  
 2000KVAR 2200V 300HZ 1PH  
 219.22 UF/TAP  
 4.1 GALS. COMBUSTIBLE LIQUID  
 CAUTION! BEFORE INTALLING OR  
 OPERATING READ GEH-2733  
 NP267214

\* UP TO +.75 [19]  
CASE BULGE

MAX. TERMINAL  
TIGHTENING TORQUE  
15 FT-LBS

NP267192A

	CAPACITOR & POWER PROTECTION FORT EDWARD, N.Y., U.S.A.		SIZE <b>A</b>	<b>OUTLINE</b> <b>19L0900WH4</b>		SHEET 2 CONT. 3
	DRAWN E.McGINN	JUNE 21, 2000	SCALE			
ISSUED						