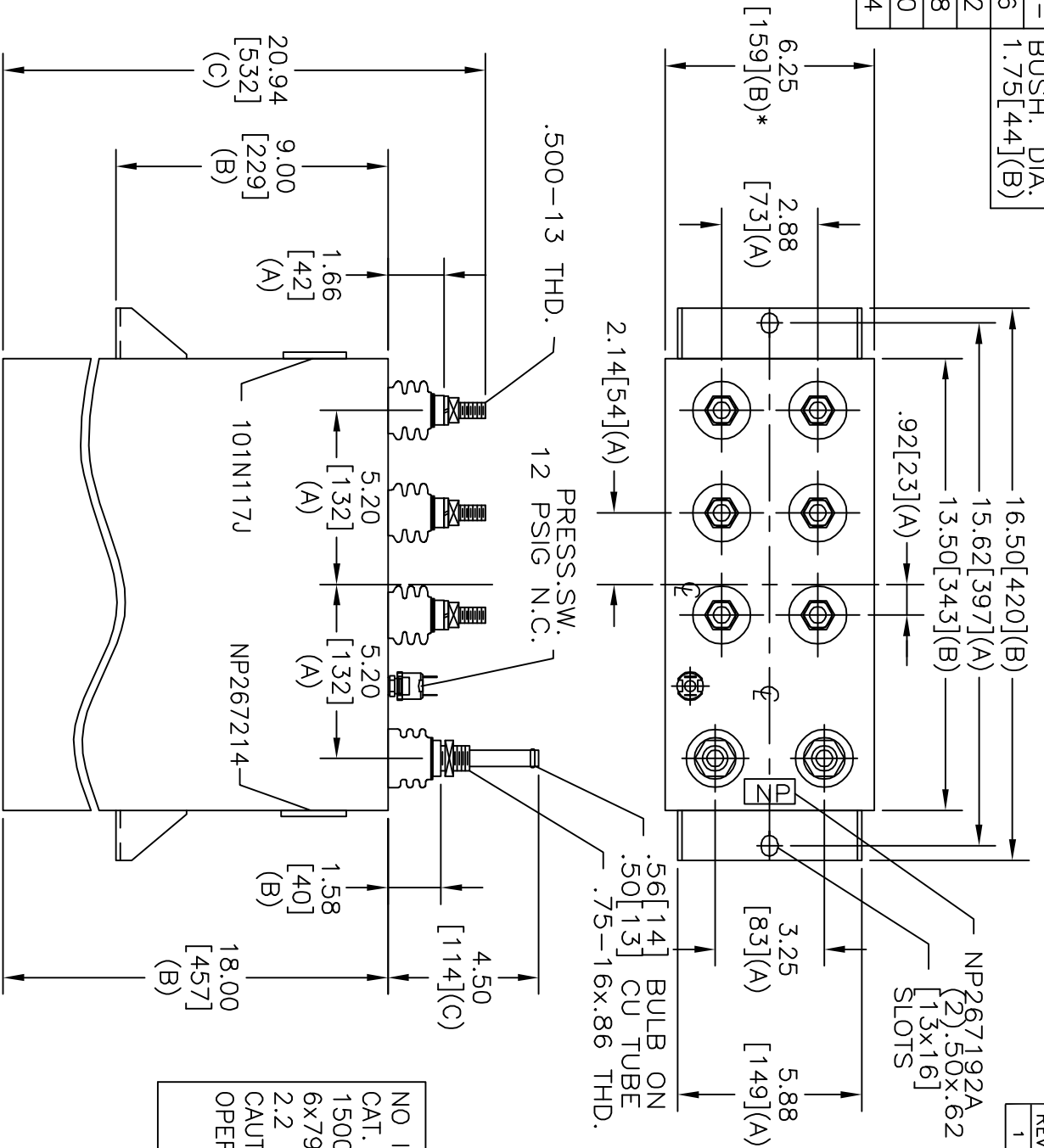
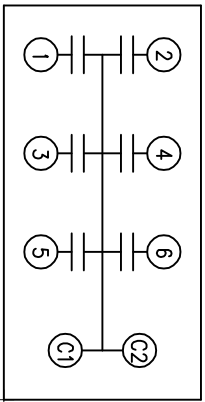


TOL	+/-	BUSH. DIA.
A	.06	1.75[.44](B)
B	.12	
C	.18	
D	.50	
E	.04	



SIZE	DWG NO	SHT	REV
A	19L0922WH4	2	1
REV	DESCRIPTION	DATE	APPROVED
1	UPDATE CAT NO.	3/2/05	BTR

TERM	UF	KVAR
1	79.58	250
2	79.58	250
3	79.58	250
4	79.58	250
5	79.58	250
6	79.58	250



SCHEMATIC DIAGRAM - 615

NO INTERNAL DISCH RESISTORS  
 CAT. 19L0922WH4 SN  
 1500KVAR 1000V 500HZ 1PH  
 6x79.58 UF/TAP  
 2.2 GAL. COMBUSTIBLE LIQUID  
 CAUTION! BEFORE INSTALLING OR  
 OPERATING READ GEH-2733

NP267214

\* UP TO +.50[.13]  
 CASE BULGE

MAX. TERMINAL  
 TIGHTENING TORQUE  
 15 FT-LBS

NP267192A

INDUSTRIAL SYSTEMS  
 FORT EDWARD, N.Y., U.S.A.

DRAWN	EPC	DATE	NOV 6, 1996
ISSUED		DATE	11/13/96

SIZE  
 A

OUTLINE  
 19L0922WH4

SHEET	2	CONT	3
ON			