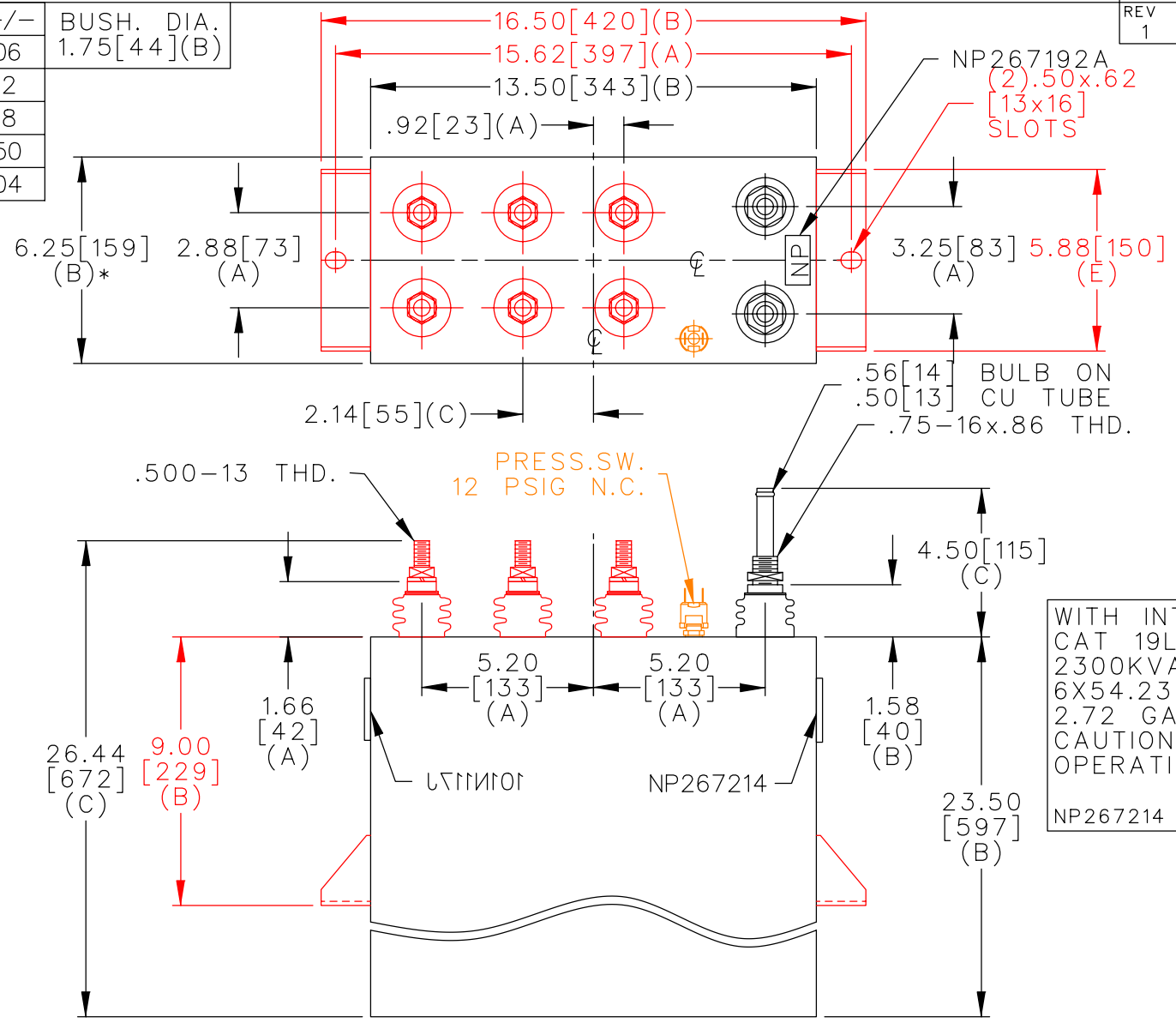
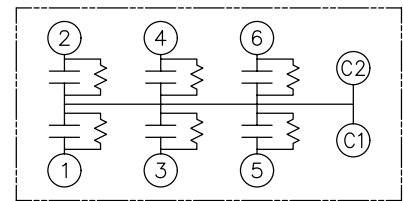


TOL	+/-	BUSH. DIA.
A	.06	1.75[44](B)
B	.12	
C	.18	
D	.50	
E	.04	



TERM	uF	kVAR
1	54.23	383.3
2	54.23	383.3
3	54.23	383.3
4	54.23	383.3
5	54.23	383.3
6	54.23	383.3



WITH INTERNAL DISCH RESISTORS  
 CAT 19L0925WH4 SN  
 2300KVAR 1500V 500HZ 1PH  
 6X54.23 UF/TAP  
 2.72 GAL COMBUSTIBLE LIQUID  
 CAUTION! BEFORE INSTALLING OR  
 OPERATING READ GEH-2733  
 NP267214

\* UP TO +.50[13]  
 CASE BULGE

MAX. TERMINAL  
 TIGHTENING TORQUE  
 15 FT-LBS

NP267192A

	CAPACITOR & POWER PROTECTION FORT EDWARD, N.Y., U.S.A.		SIZE <b>A</b>	UNIT WEIGHT 104 / 47 LB/KG	<b>OUTLINE</b> <b>19L0925WH4</b>	SHEET 2 CONT. 3 ON ON
	DRAWN 08/28/96	LRD 08/28/96	SCALE WC6	version		
ISSUED						

DISTR TO