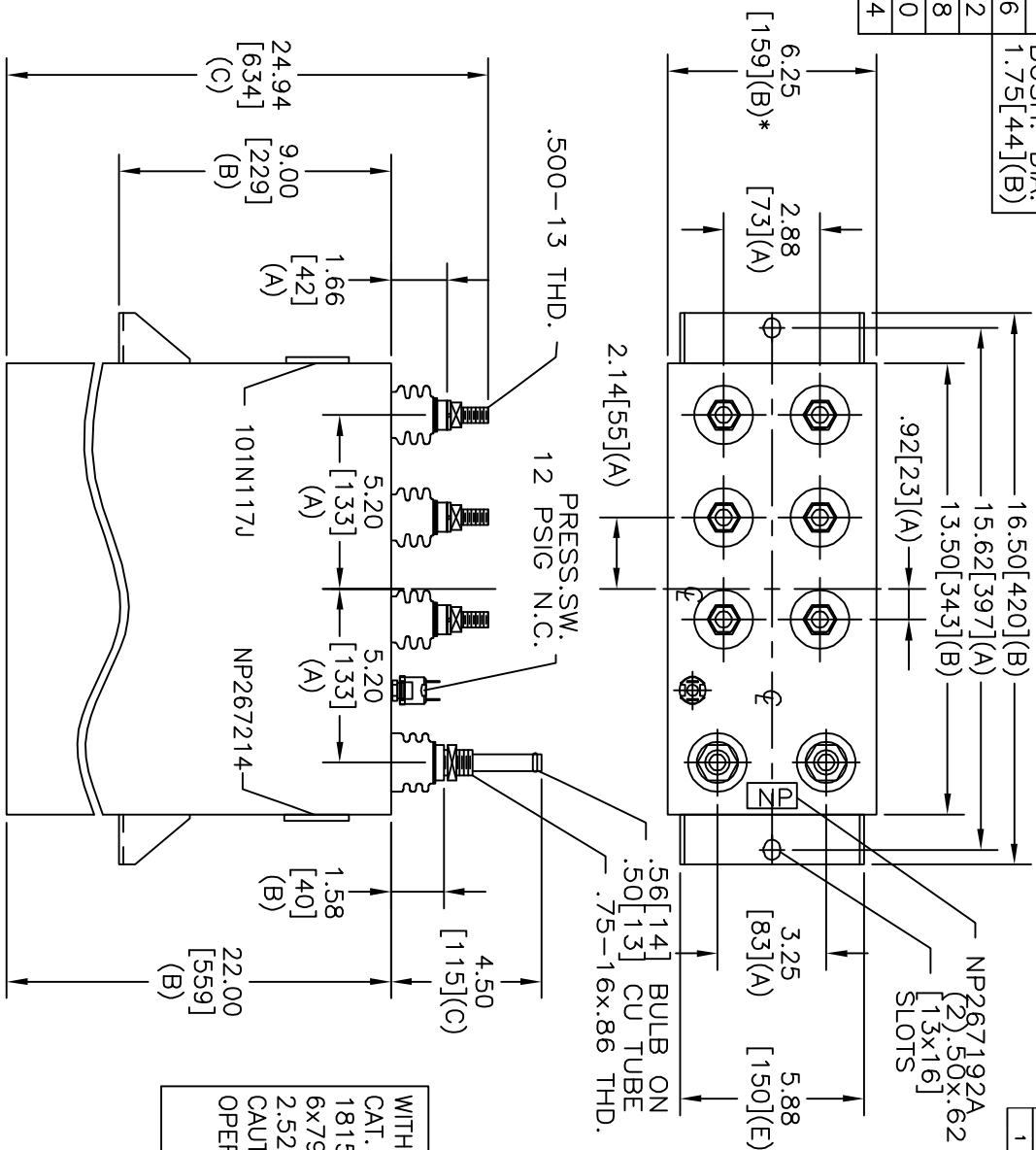
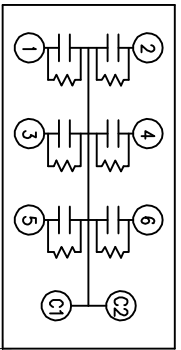


TOL	+/-	BUSH. DIA.
A	.06	1.75[.44](B)
B	.12	
C	.18	
D	.50	
E	.04	



TERM	UF	KVAR
1	79.58	302.5
2	79.58	302.5
3	79.58	302.5
4	79.58	302.5
5	79.58	302.5
6	79.58	302.5



SCHEMATIC DIAGRAM - 617

WITH INTERNAL DISCH RESISTORS  
 CAT. 19L0926WH4 SN  
 1815KVAR 1100V 500HZ 1PH  
 6x79.58 UF/TAP  
 2.52 GAL. COMBUSTIBLE LIQUID  
 CAUTION! BEFORE INSTALLING OR  
 OPERATING READ GEH-2733  
 NP267214

\* UP TO +.50[13]  
 CASE BULGE

MAX. TERMINAL  
 TIGHTENING TORQUE  
 15 FT-LBS

NP267192A

SIZE	DWG NO	SHT	REV
A	19L04926WH4	2	1
REV	DESCRIPTION	DATE	APPROVED
1	UPDATE CAT NO	3/24/04	BTR



INDUSTRIAL SYSTEMS  
 FORT EDWARD, N.Y., U.S.A.

DRAWN	EPC	DATE	NOV 6, 1996
ISSUED		DATE	11-13-96

SIZE  
 A

SCALE

OUTLINE  
 19L0926WH4

SHEET 2 CONT 3

DISTR. TO