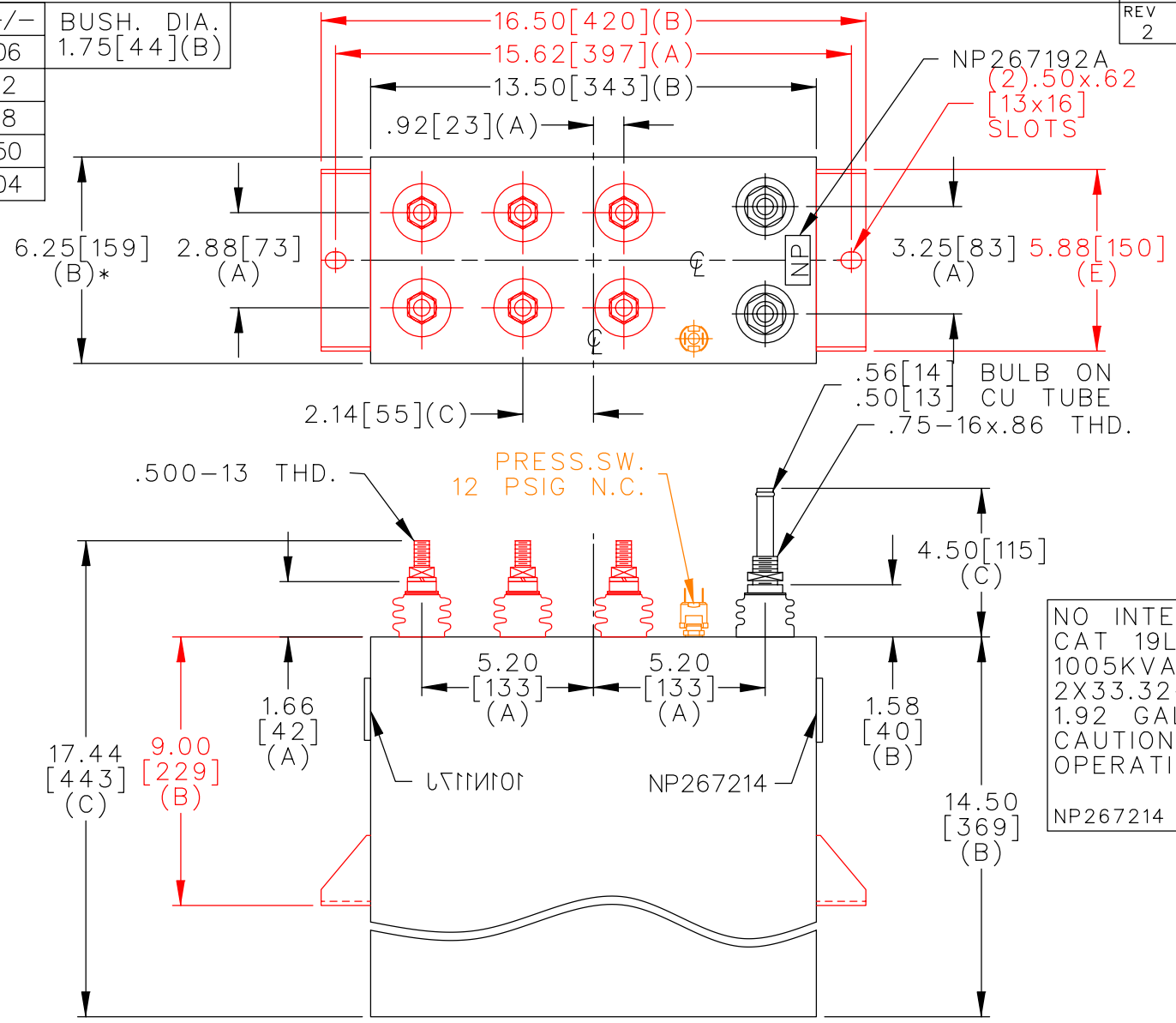
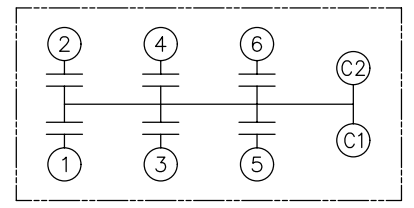


TOL	+/-	BUSH. DIA.
A	.06	1.75[44](B)
B	.12	
C	.18	
D	.50	
E	.04	



TERM	uF	kVAR
1	33.32	83.75
2	33.32	83.75
3	66.65	167.5
4	66.65	167.5
5	99.97	251.3
6	99.97	251.3



NO INTERNAL DISCH RESISTORS
 CAT 19L0940WH4 SN
 1005KVAR 1000V 400HZ 1PH
 2X33.32+2X66.65+2X99.97UF/TAP
 1.92 GAL COMBUSTIBLE LIQUID
 CAUTION! BEFORE INSTALLING OR
 OPERATING READ GEH-2733
 NP267214

* UP TO +.50[13]
 CASE BULGE

MAX. TERMINAL
 TIGHTENING TORQUE
 15 FT-LBS

NP267192A

	CAPACITOR & POWER PROTECTION FORT EDWARD, N.Y., U.S.A.		SIZE A	UNIT WEIGHT 63 / 29 LB/KG	OUTLINE 19L0940WH4	SHEET 2 CONT. 3 ON ON
	DRAWN 08/29/96	LRD 08/29/96	SCALE WC6	version		
ISSUED						

DISTR TO