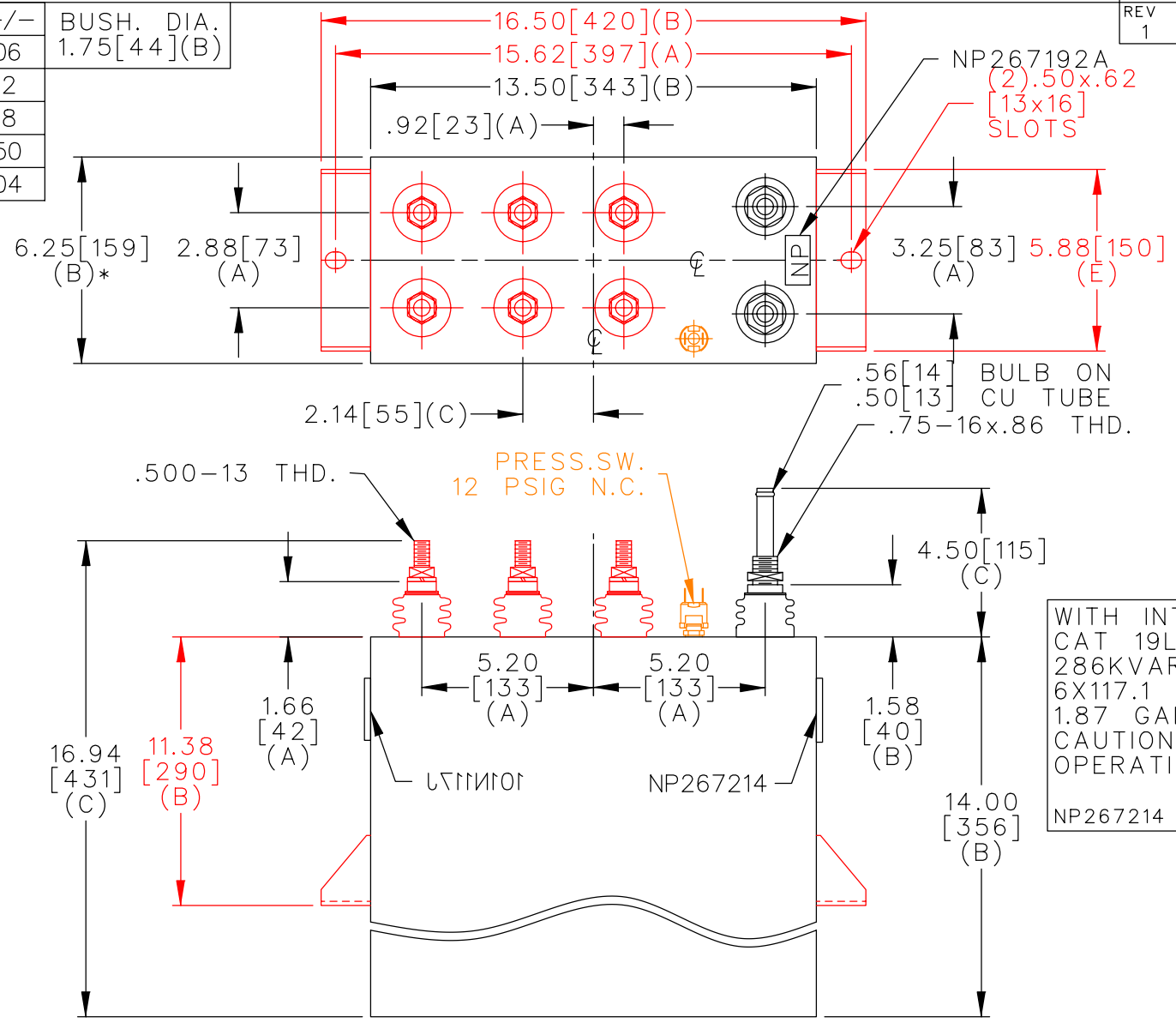
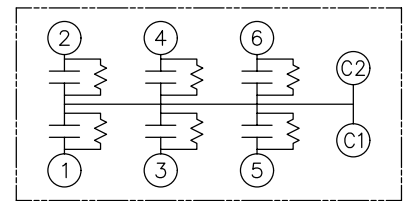


TOL	+/-	BUSH. DIA.
A	.06	1.75[44](B)
B	.12	
C	.18	
D	.50	
E	.04	



TERM	uF	kVAR
1	117.1	47.67
2	117.1	47.67
3	117.1	47.67
4	117.1	47.67
5	117.1	47.67
6	117.1	47.67



SCHEMATIC DIAGRAM - 617

WITH INTERNAL DISCH RESISTORS
 CAT 19L0950WH4 SN
 286KVAR 600V 180HZ 1PH
 6X117.1 UF/TAP
 1.87 GAL COMBUSTIBLE LIQUID
 CAUTION! BEFORE INSTALLING OR
 OPERATING READ GEH-2733
 NP267214

* UP TO +.50[13]
 CASE BULGE

MAX. TERMINAL
 TIGHTENING TORQUE
 15 FT-LBS

NP267192A

	CAPACITOR & POWER PROTECTION FORT EDWARD, N.Y., U.S.A.		SIZE A	UNIT WEIGHT 64 / 29 LB/KG	<h1>OUTLINE</h1> <h2>19L0950WH4</h2>	DISTR TO
	DRAWN 08/29/96	LRD 08/29/96	SCALE WC6	version		
ISSUED						