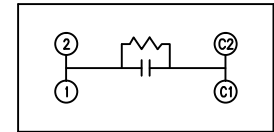
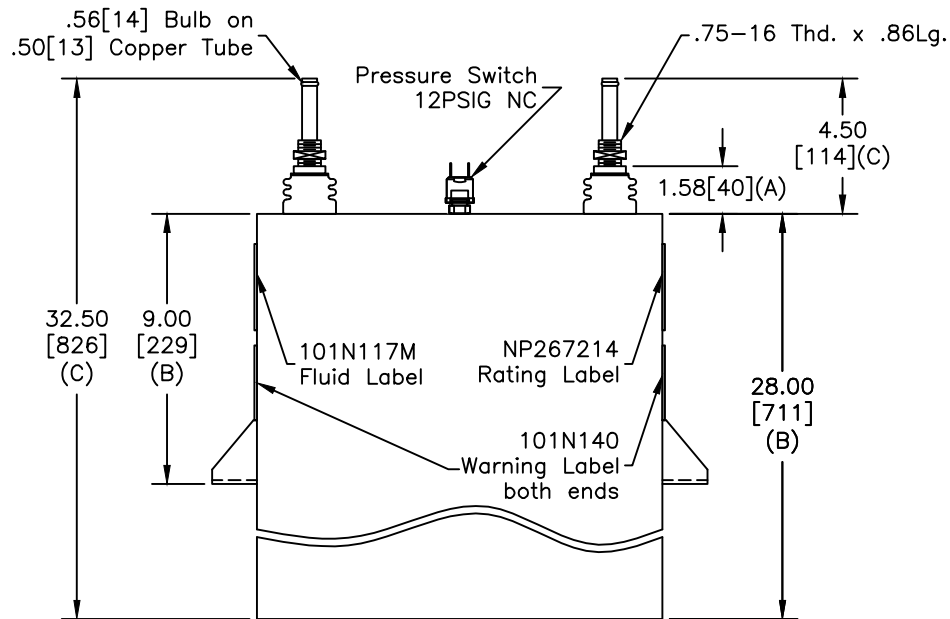
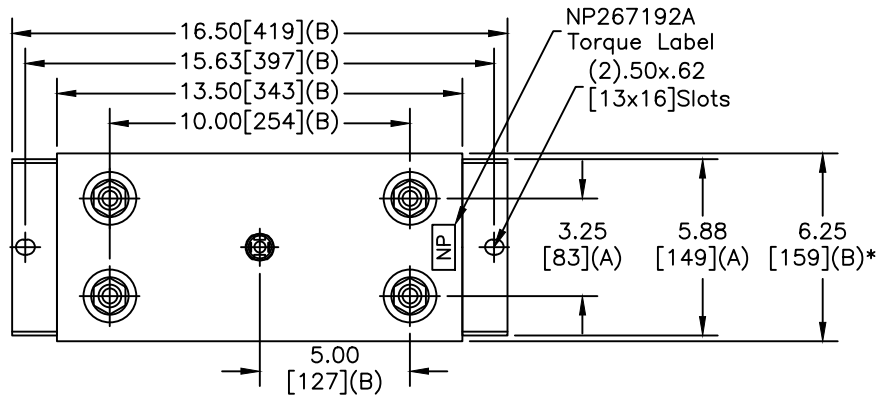


| | | | |
|-----------|------------------------------|--------------------|-----------------|
| SIZE A | DWG NO 19L0959WH4 | SHT 2 | REV 2 |
| REV 2 | DESCRIPTION UPDATE LABELS | DATE 01/27/2014 | APPROVED HBO |

| | |
|------------|-------------|
| TOL | +/- |
| A | .06 |
| B | .12 |
| C | .18 |
| D | .50 |
| E | .04 |
| BUSH. DIA. | 1.75[44](B) |



SCHMATIC DIAGRAM - 107

WITH INTERNAL DISCH RESISTORS
 CAT. 19L0959WH4 SN
 2500KVAR 2400V 400HZ 1PH
 172.7 UF
 3.36 GAL. COMBUSTIBLE LIQUID
 CAUTION! BEFORE INSTALLING OR
 OPERATING READ GEH-2733
 MADE IN USA NP267214

- NOTES:
 1. Maximum terminal tightening torque
 .50-13 thd. 15 ft-lbs. 20.3 N-m
 .75-16 thd. 25 ft-lbs. 33.9 N-m
 2. Minimum water flow 1 GPM (3.8 l/m)

* UP TO +.50[13] CASE BULGE

MAX. TERMINAL TIGHTENING TORQUE 15 FT-LBS.

NP267192A

| | | | |
|---|----------|------------------|----------------------------------|
| GE ENERGY FORT EDWARD, N.Y., U.S.A. | | SIZE A | UNIT WEIGHT 108 / 49 LB/KG |
| DRAWN | 08/26/96 | DATE | 08/26/96 |
| ISSUED | | DATE | 08/26/96 |
| | | SCALE | WC1 |

OUTLINE
19L0959WH4

SHEET 2 CONT ON 3

DISTR. TO