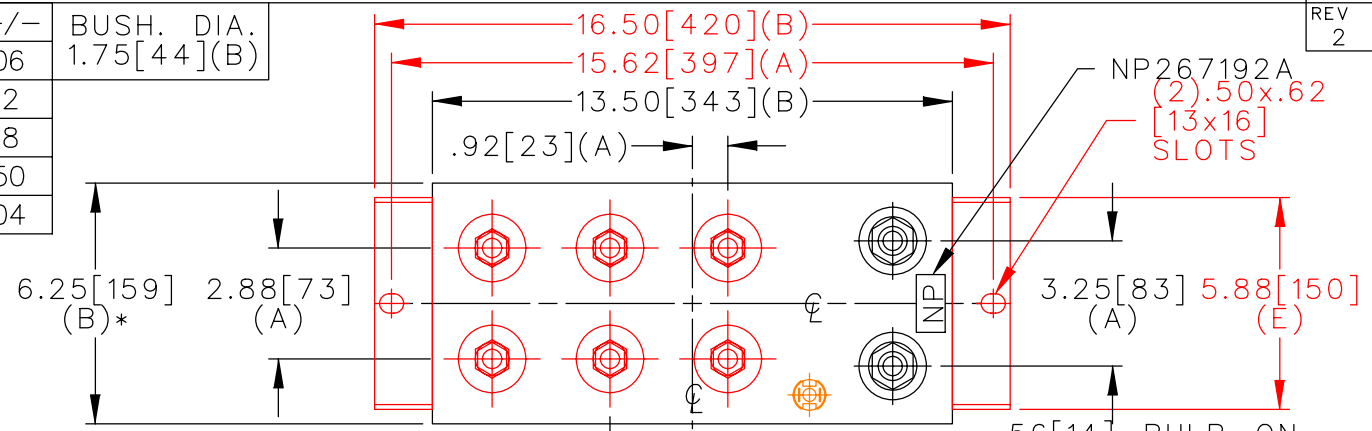
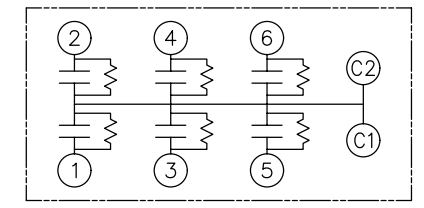


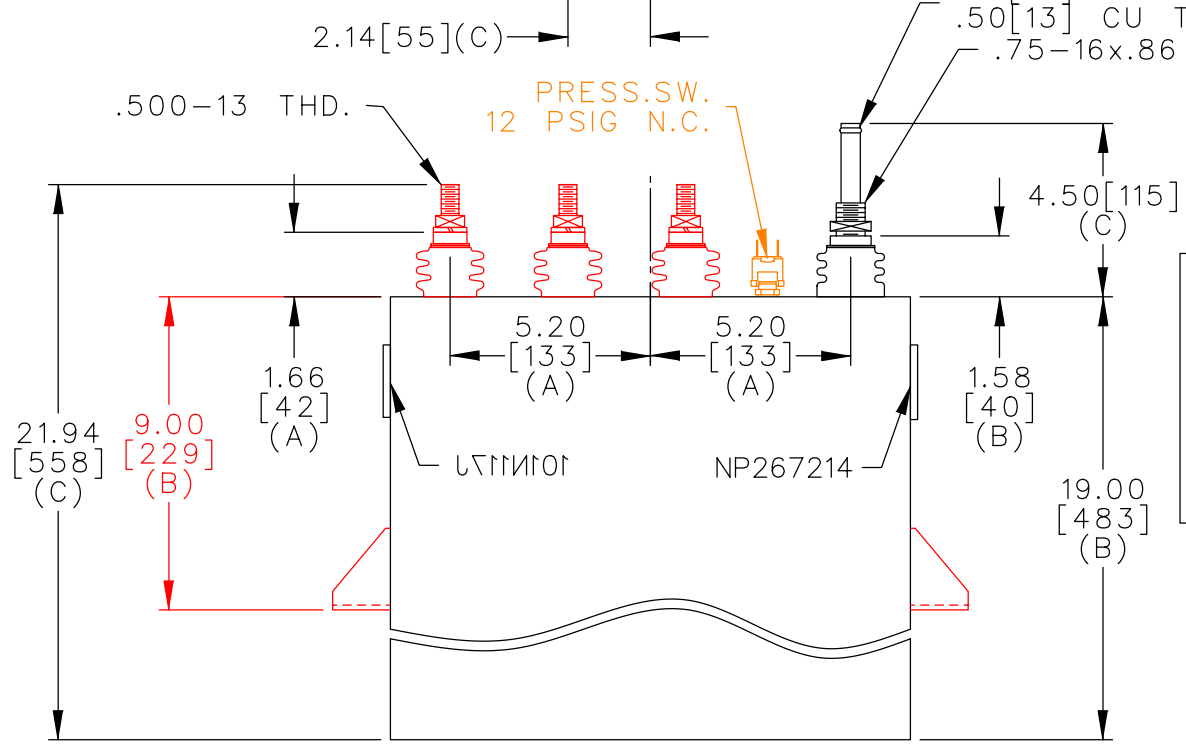
TOL	+/-	BUSH. DIA.
A	.06	1.75[44](B)
B	.12	
C	.18	
D	.50	
E	.04	



TERM	uF	kVAR
1	42.79	302.5
2	42.79	302.5
3	42.79	302.5
4	42.79	302.5
5	42.79	302.5
6	42.79	302.5



SCHEMATIC DIAGRAM - 617



WITH INTERNAL DISCH RESISTORS
 CAT 19L0961WH4 SN
 1815KVAR 1500V 500HZ 1PH
 6X42.79 UF/TAP
 2.23 GAL COMBUSTIBLE LIQUID
 CAUTION! BEFORE INSTALLING OR
 OPERATING READ GEH-2733
 NP267214

* UP TO +.50[13]
 CASE BULGE

MAX. TERMINAL
 TIGHTENING TORQUE
 15 FT-LBS

NP267192A

	CAPACITOR & POWER PROTECTION FORT EDWARD, N.Y., U.S.A.		SIZE A	UNIT WEIGHT 85 / 39 LB/KG	OUTLINE 19L0961WH4	SHEET 2 CONT. 3 ON 3
	DRAWN 08/29/96	LRD 08/29/96	SCALE WC6	version		
ISSUED						

DISTR TO