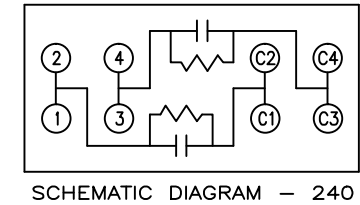
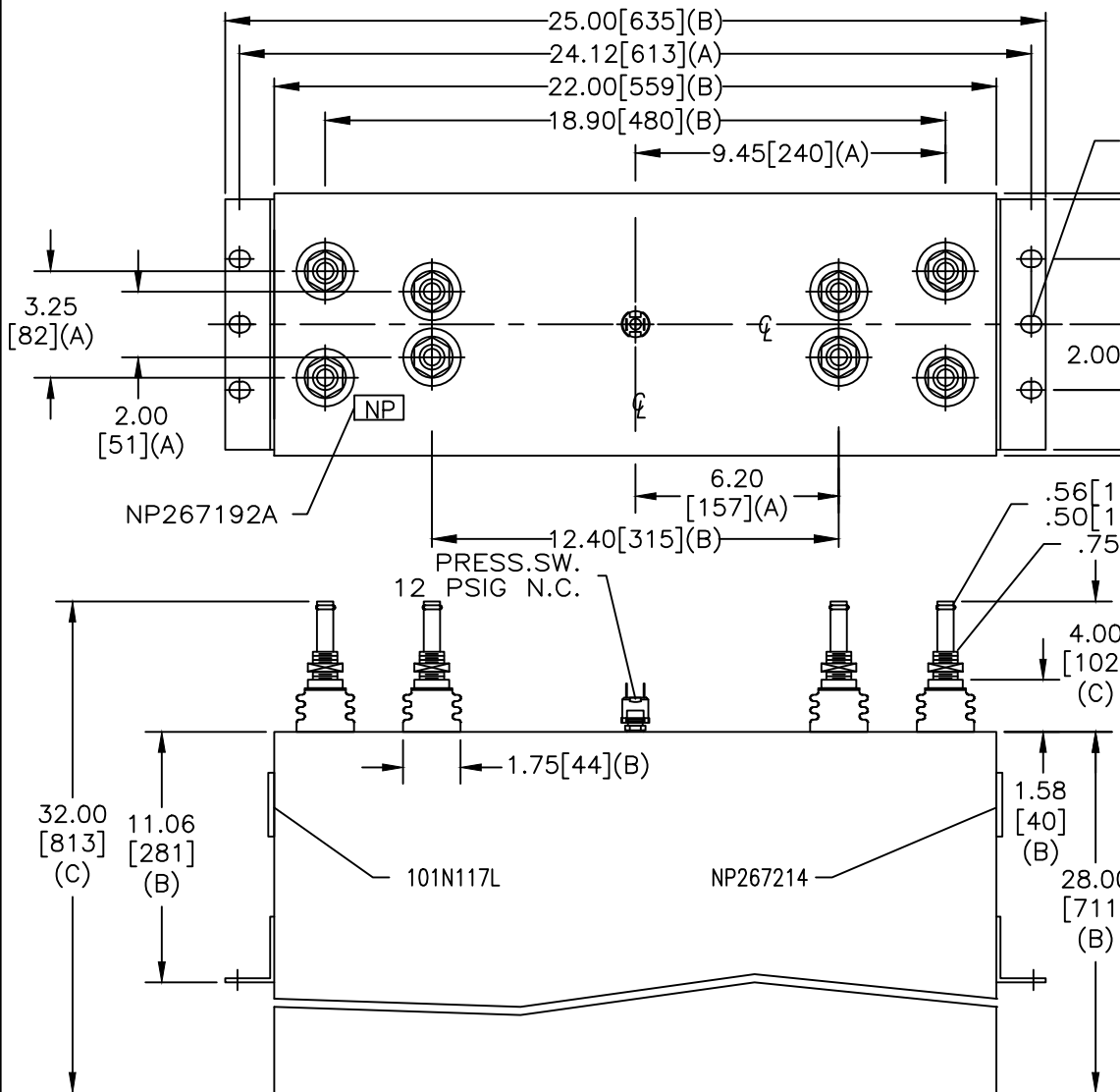


SIZE A	DWG NO 19L0970WH4	SHT 2	REV 1
REV 1	DESCRIPTION Scale Cov	DATE 2/28/13	APPROVED JBC



WITH INTERNAL DISCH RESISTORS
 CAT. 19L0970WH4 SN
 13400KVAR 3000V 1200HZ 1PH
 2x98.73 UF/TAP
 6.8 GAL. COMBUSTIBLE LIQUID
 CAUTION! BEFORE INSTALLING OR
 OPERATING READ GEH-2733
 MADE IN USA NP267214

- NOTES:
 1. Maximum terminal tightening torque
 .50-13 thd. 15 ft-lbs. 20.3 N-m
 .75-16 thd. 25 ft-lbs. 33.9 N-m
 2. Minimum water flow 1 GPM (3.8 l/m)

* UP TO +.75 [19] CASE BULGE

MAX. TERMINAL TIGHTENING TORQUE
 15 FT-LBS
 NP267192A

GE ENERGY FORT EDWARD, N.Y., U.S.A.		SIZE A
DRAWN JBCozzens	DATE 10/08/2010	SCALE
ISSUED	DATE 10/08/2010	

OUTLINE 19L0970WH4

SHEET 2 CONT ON 3

DISTR. TO