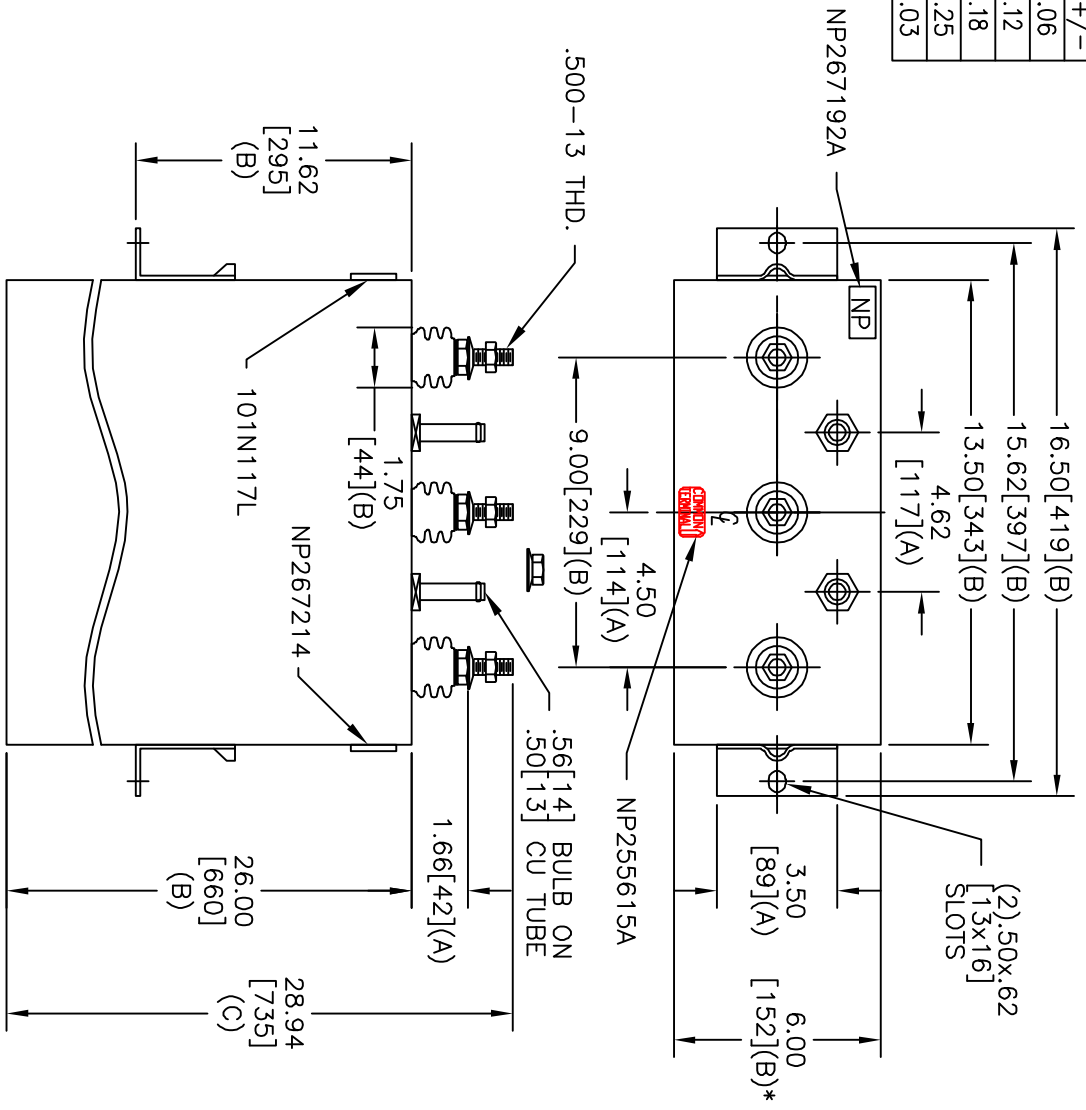
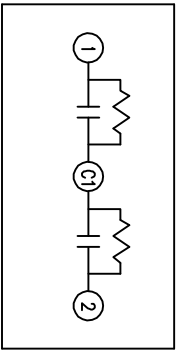


TOL	+/-
A	.06
B	.12
C	.18
D	.25
E	.03



TERM	UF	KVAR
1	313.9	50
2	313.9	50



SCHEMATIC DIAGRAM - 227

WITH INTERNAL DISCH RESISTORS
 CAT. 19L0979WH3 SN
 100KVAR 650V 60HZ 1PH
 2x 313.9 UF/TAP
 3.50 GAL. COMBUSTIBLE LIQUID
 CAUTION! BEFORE INSTALLING OR
 OPERATING READ GEH-2733
 NP267214

* UP TO +.50[13]
 CASE BULGE

MAX. TERMINAL
 TIGHTENING TORQUE
 15 FT-LBS

NP267192A

SIZE	DWG NO	SHT	REV
A	19L0979WH3	2	1
REV	DESCRIPTION	DATE	APPROVED
1	RE TRACE	2/16/07	BTR

GE ENERGY
 FORT EDWARD, N.Y., U.S.A.

DRAWN E. McGinn
 DATE 1/17/1997

ISSUED
 DATE 1/22/1997

SIZE A
 SCALE

OUTLINE
 19L0979WH3

SHEET 2 CONT 3

DISTR. TO