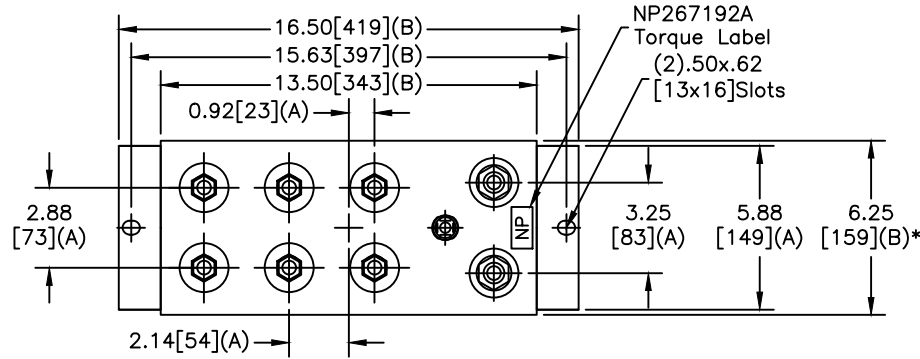
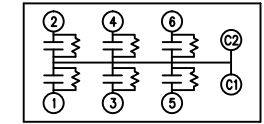
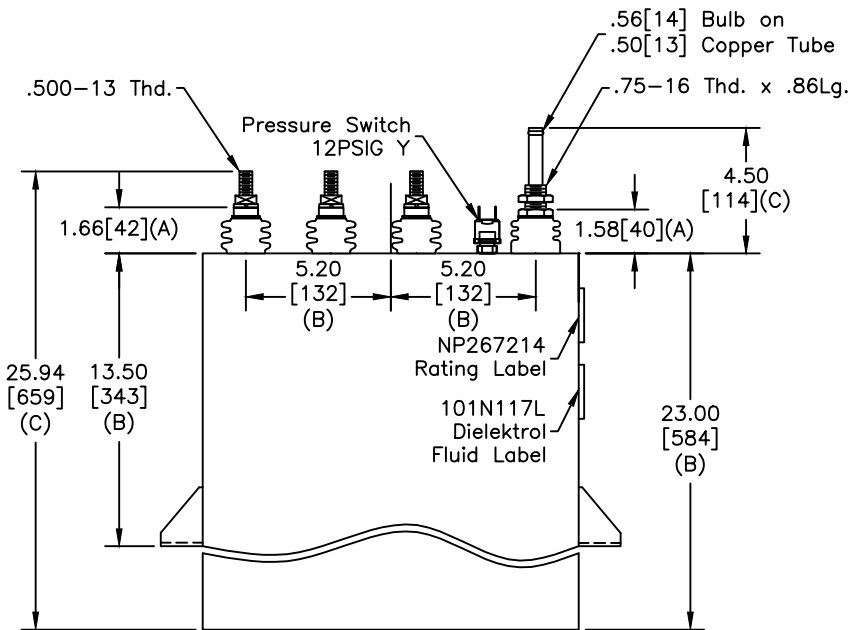


TOL	+/-
A	.06
B	.12
C	.18
D	.50
E	.04
BUSH. DIA.	1.75[44](B)

SIZE A	DWG NO 19L0983WH4	SHT 2	REV 1
REV 1	DESCRIPTION RECREATE FROM TEMPLATE	DATE 9/21/11	APPROVED DMR



TERM	uF	kVAR
1	8.8	303
2	8.8	303
3	8.8	303
4	8.8	303
5	8.8	303
6	8.8	303



SCHEMATIC DIAGRAM - 617

**GE CAPACITOR**  
 WITH INTERNAL DISCHARGE RESISTORS  
 CAT. 19L0983WH4 SN  
 1815KVAR 3300V 500HZ 1PH  
 6x8.8UF/TAP  
 2.86 GAL. COMBUSTIBLE LIQUID  
 CAUTION! BEFORE INSTALLING OR  
 OPERATING READ GEH-2733  
 MADE IN USA NP267214

\* UP TO +.50[13] CASE BULGE

MAX. TERMINAL TIGHTENING TORQUE 15 FT-LBS.

GE ENERGY FORT EDWARD, N.Y., U.S.A.		SIZE A
DRAWN DMR	DATE 12/27/2010	Est Weight 96 lbs.
ISSUED	DATE 12/27/2010	
		SCALE WC6

<b>OUTLINE</b> <b>19L0983WH4</b>	
SHEET 2	CONT ON 3

DISTR. TO