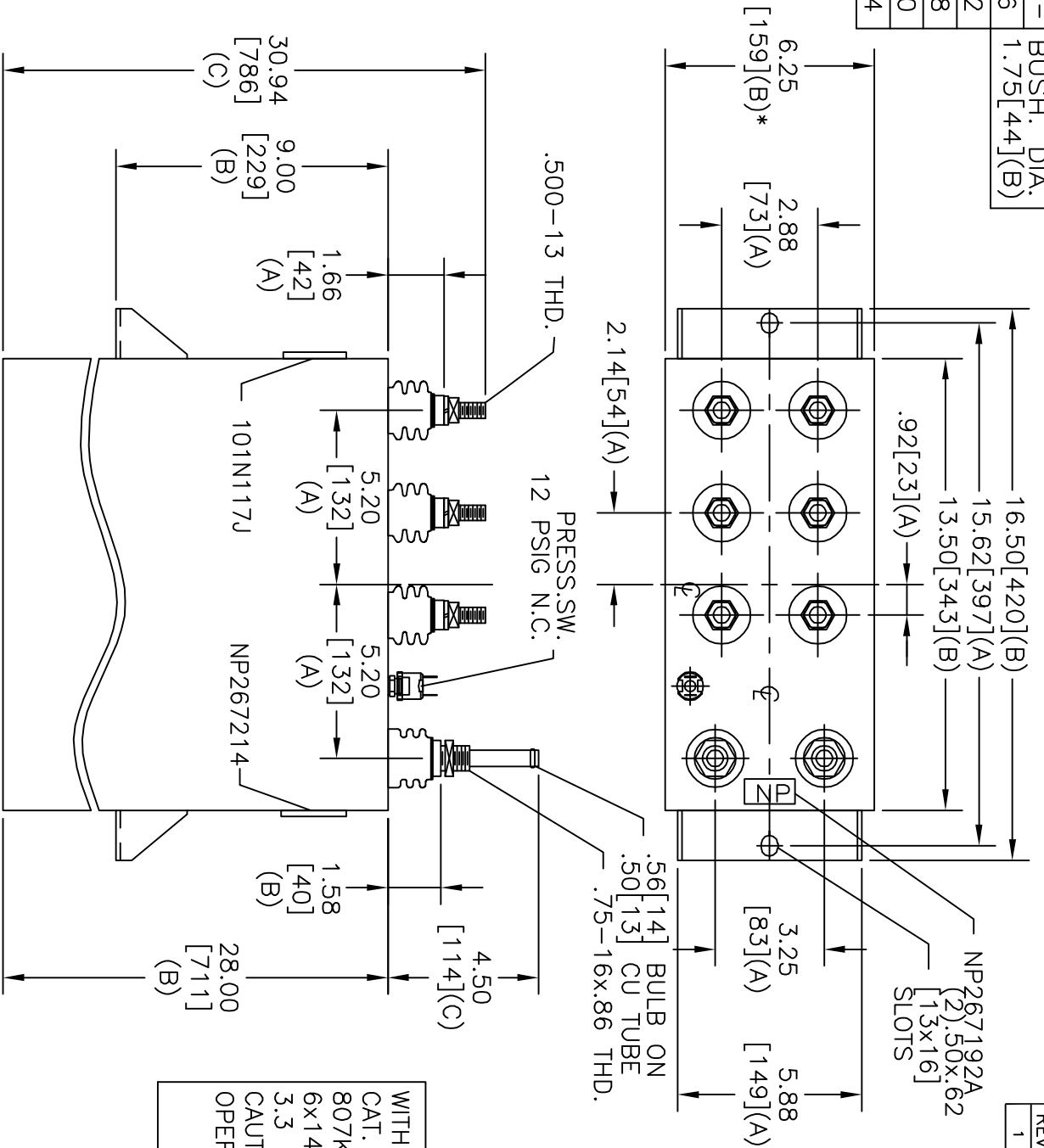
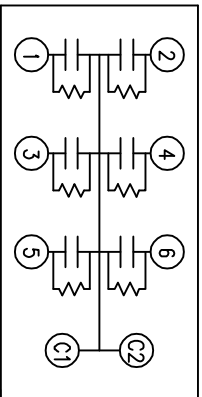


TOL	+/-	BUSH. DIA.
A	.06	1.75[44](B)
B	.12	
C	.18	
D	.50	
E	.04	



TERM	UF	KVAR
1	142.7	134.5
2	142.7	134.5
3	142.7	134.5
4	142.7	134.5
5	142.7	134.5
6	142.7	134.5



SCHEMATIC DIAGRAM - 617

WITH INTERNAL DISCH RESISTORS  
 CAT. 19L0992WH4 SN  
 807KVAR 1000V 150HZ 1PH  
 6x142.7 UF/TAP  
 3.3 GAL. COMBUSTIBLE LIQUID  
 CAUTION! BEFORE INSTALLING OR  
 OPERATING READ GEH-2733

NP267214

SIZE	DWG NO	SHT	REV
A	19L0992WH4	2	1
REV	DESCRIPTION	DATE	APPROVED
1	UPDATE CAT NO.	2/16/05	BTR

\* UP TO +.50[13]  
 CASE BULGE

MAX. TERMINAL  
 TIGHTENING TORQUE  
 15 FT-LBS

INDUSTRIAL SYSTEMS  
 FORT EDWARD, N.Y., U.S.A.

SIZE  
 A

OUTLINE

DRAWN EPC DATE AUG 29, 1996

19L0992WH4

ISSUED

DATE 6/4/96

SCALE

SHEET 2 CONT 3

DISTR. TO