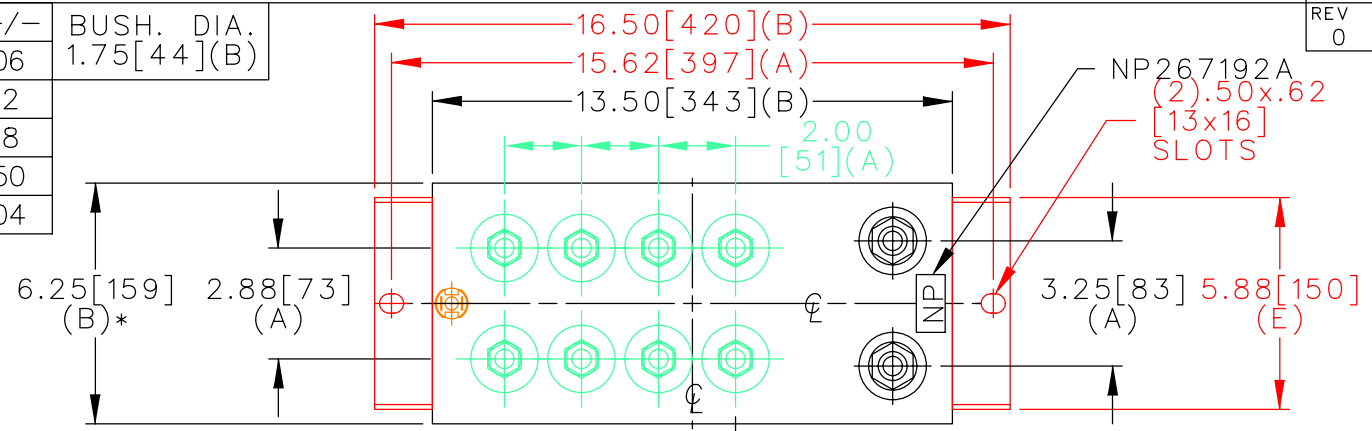
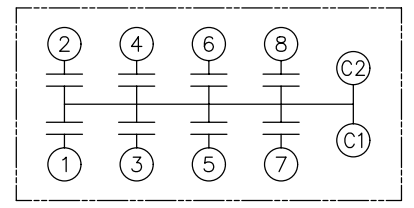


TOL	+/-	BUSH. DIA.
A	.06	1.75[44](B)
B	.12	
C	.18	
D	.50	
E	.04	

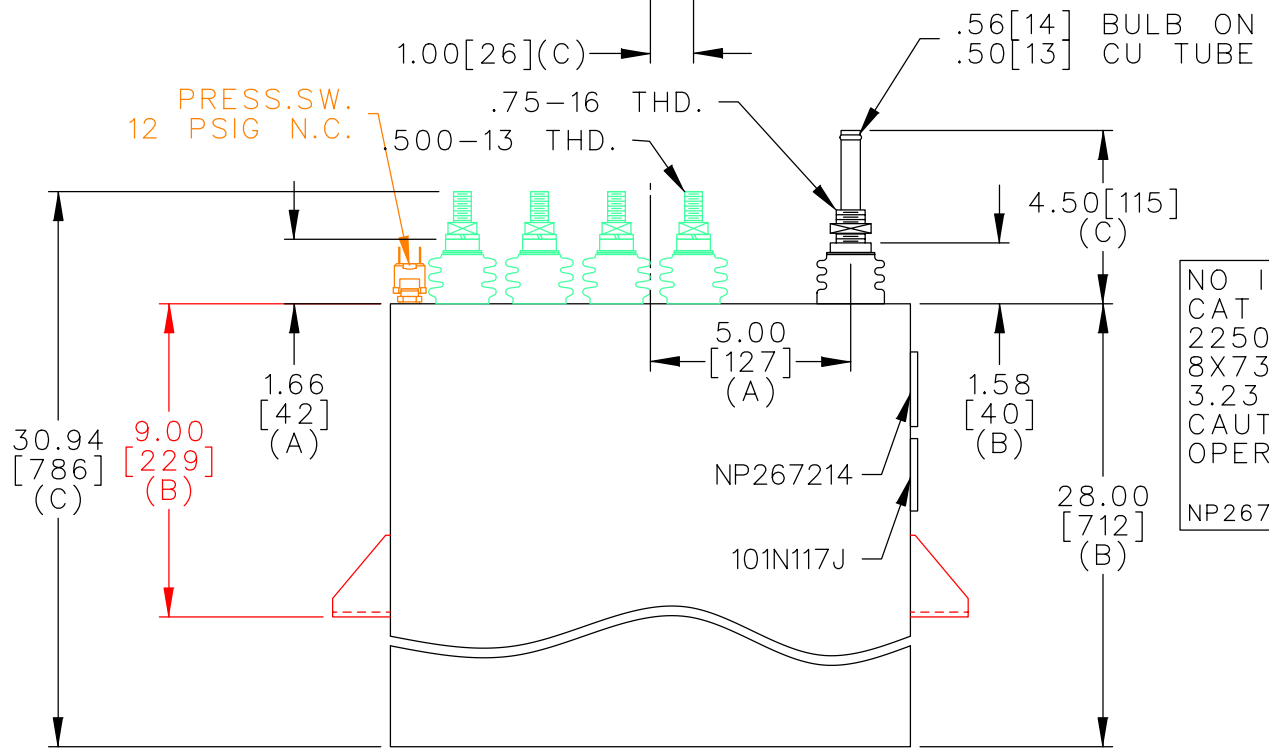


TERM	uF	kVAR
1	73.99	281.2
2	73.99	281.2
3	73.99	281.2
4	73.99	281.2
5	73.99	281.2
6	73.99	281.2
7	73.99	281.2
8	73.99	281.2



SCHEMATIC DIAGRAM - 800

PRESS.SW.  
12 PSIG N.C.



NO INTERNAL DISCH RESISTORS  
 CAT 19L1026WH4 SN  
 2250KVAR 1100V 500HZ 1PH  
 8X73.99 UF/TAP  
 3.23 GAL COMBUSTIBLE LIQUID  
 CAUTION! BEFORE INSTALLING OR  
 OPERATING READ GEH-2733  
 NP267214

\* UP TO +.50[13]  
CASE BULGE

MAX. TERMINAL  
TIGHTENING TORQUE  
15 FT-LBS

NP267192A

<p>CAPACITOR &amp; POWER PROTECTION FORT EDWARD, N.Y., U.S.A.</p>	<p>SIZE <b>A</b></p>	<p>UNIT WEIGHT 119 / 54 LB/KG</p>	<p><b>OUTLINE</b> <b>19L1026WH4</b></p>
	<p>DRAWN 11/06/96 LRD 11/06/96</p>	<p>ISSUED</p>	
<p>SHEET 2 CONT. ON 3</p>			<p>DISTR TO</p>