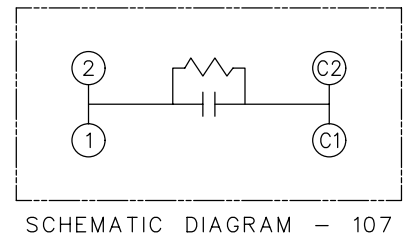
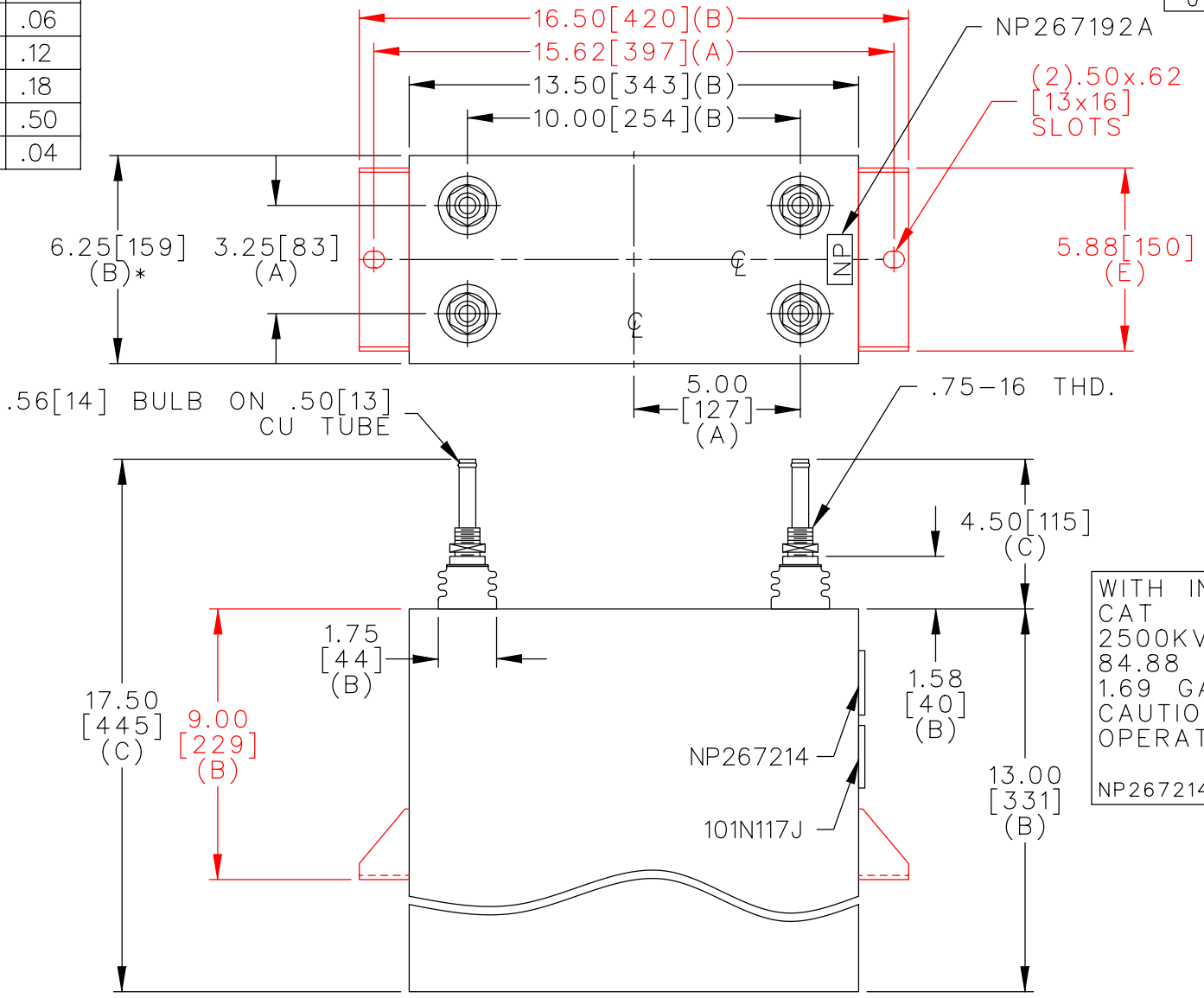


TOL	+/-
A	.06
B	.12
C	.18
D	.50
E	.04



WITH INTERNAL DISCH RESISTORS  
 CAT 19L1034WH3 SN  
 2500KVAR 1250V 3000HZ 1PH  
 84.88 UF/TAP  
 1.69 GAL COMBUSTIBLE LIQUID  
 CAUTION! BEFORE INSTALLING OR  
 OPERATING READ GEH-2733  
 NP267214

\* UP TO +.50[13]  
 CASE BULGE

MAX. TERMINAL  
 TIGHTENING TORQUE  
 15 FT-LBS

NP267192A

	CAPACITOR & POWER PROTECTION FORT EDWARD, N.Y., U.S.A.		SIZE <b>A</b>	UNIT WEIGHT 58 / 26 LB/KG	<b>OUTLINE</b> <b>19L1034WH3</b>	SHEET 2 CONT. 3
	DRAWN 11/06/96	LRD 11/06/96	SCALE WC1	version		
ISSUED						ON 3

DISTR TO