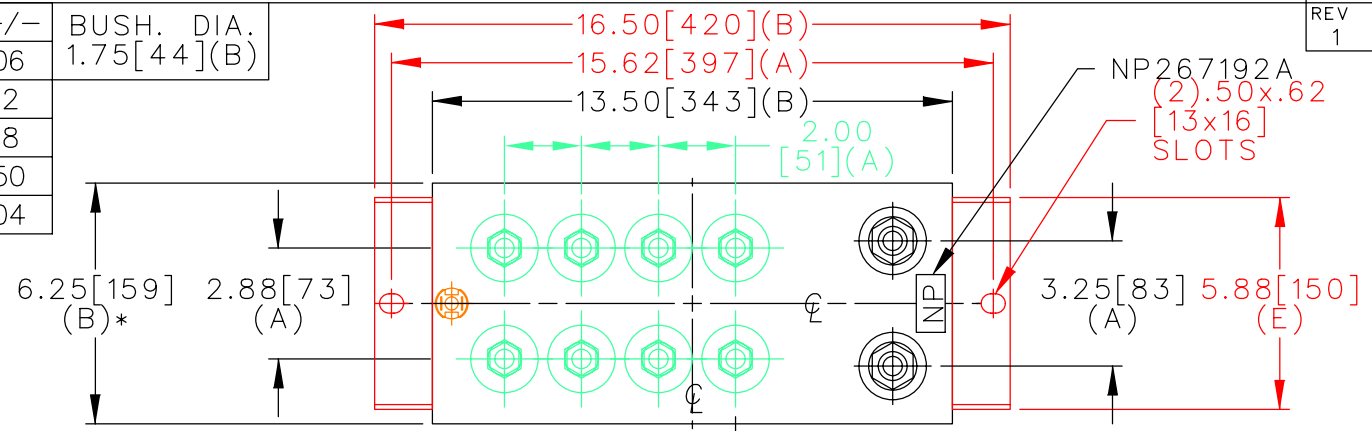
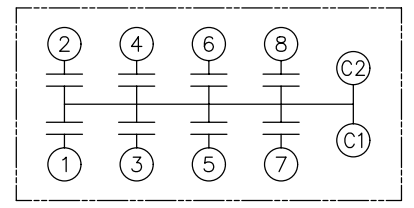


TOL	+/-	BUSH. DIA.
A	.06	1.75[44](B)
B	.12	
C	.18	
D	.50	
E	.04	

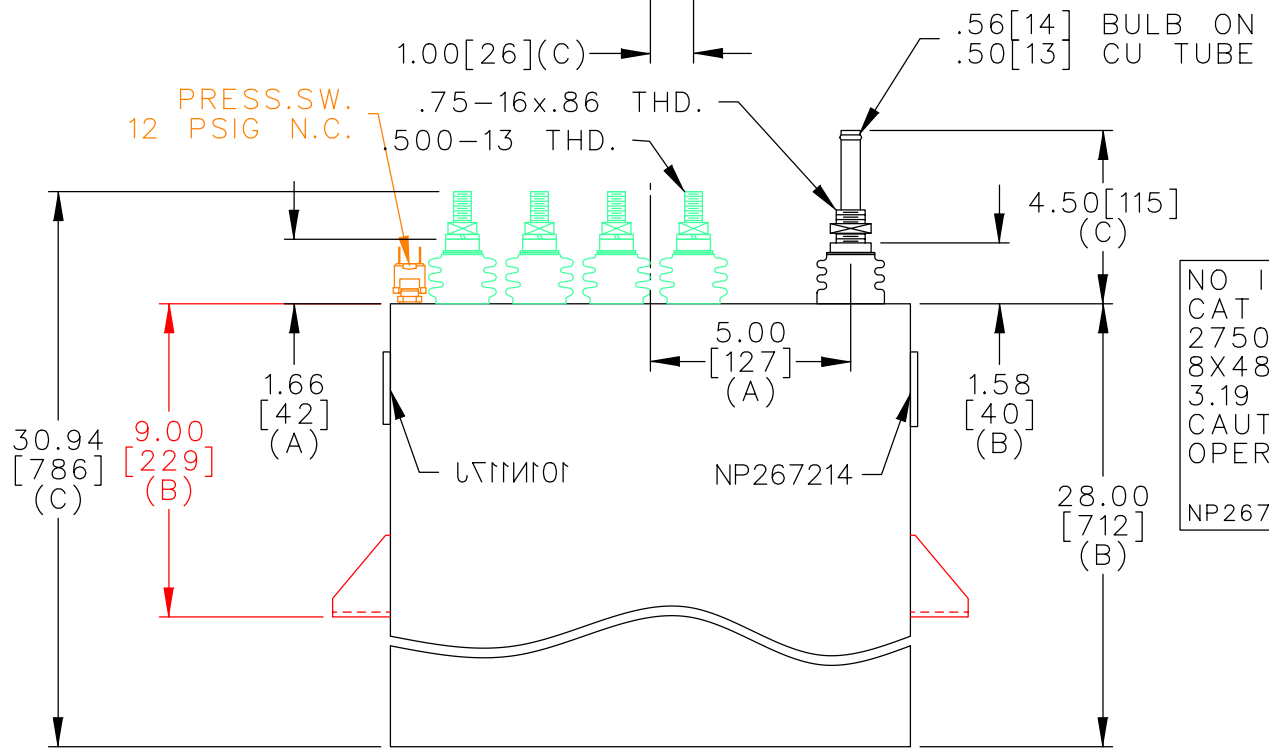


TERM	uF	kVAR
1	48.63	343.7
2	48.63	343.7
3	48.63	343.7
4	48.63	343.7
5	48.63	343.7
6	48.63	343.7
7	48.63	343.7
8	48.63	343.7



SCHEMATIC DIAGRAM - 800

PRESS.SW.
12 PSIG N.C.



NO INTERNAL DISCH RESISTORS
 CAT 19L1038WH4 SN
 2750KVAR 1500V 500HZ 1PH
 8X48.63 UF/TAP
 3.19 GAL COMBUSTIBLE LIQUID
 CAUTION! BEFORE INSTALLING OR
 OPERATING READ GEH-2733
 NP267214

* UP TO +.50[13]
CASE BULGE

MAX. TERMINAL
TIGHTENING TORQUE
15 FT-LBS

NP267192A

<p>CAPACITOR & POWER PROTECTION FORT EDWARD, N.Y., U.S.A.</p>	SIZE A	UNIT WEIGHT 125 / 57 LB/KG	<p>OUTLINE 19L1038WH4</p>	DISTR TO
	DRAWN 11/06/96 LRD 11/06/96 ISSUED	SCALE WC7		