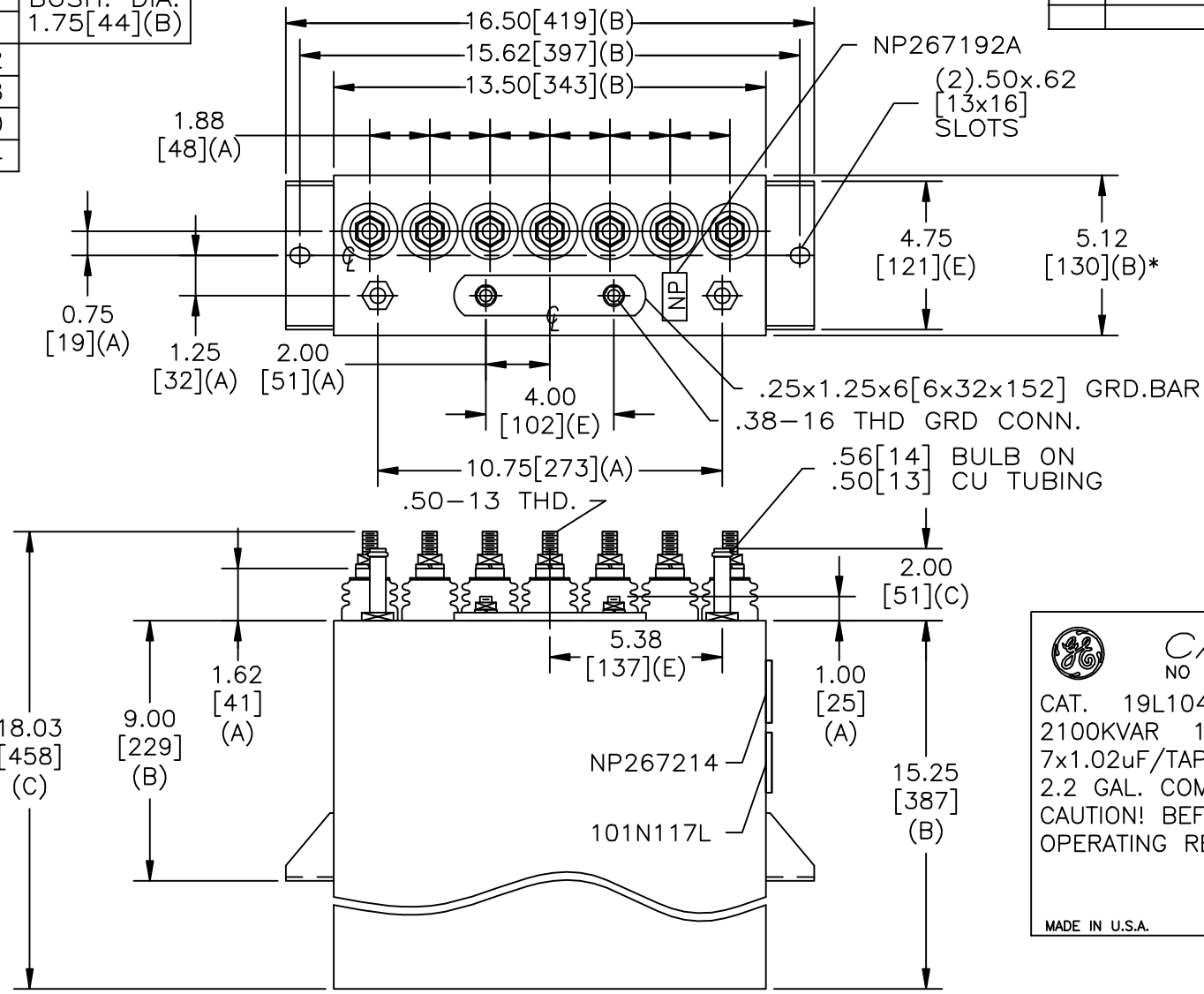
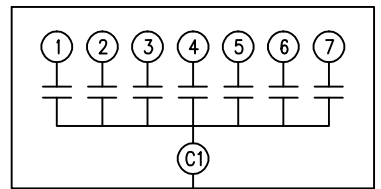


SIZE A	DWG NO 19L1041WH3	SHT 2	REV
REV	DESCRIPTION	DATE	APPROVED

TOL	+/-	BUSH. DIA.
A	.06	1.75[44](B)
B	.12	
C	.18	
D	.50	
E	.04	



TERM	uF	kVAR
1	1.02	300
2	1.02	300
3	1.02	300
4	1.02	300
5	1.02	300
6	1.02	300
7	1.02	300



SCHEMATIC DIAGRAM - 716

CAPACITOR
NO INTERNAL DISCHARGE RESISTORS

CAT. 19L1041WH3 SN
2100KVAR 1250V 30000HZ 1PH
7x1.02uF/TAP
2.2 GAL. COMBUSTIBLE LIQUID
CAUTION! BEFORE INSTALLING OR
OPERATING READ GEH-2733

MADE IN U.S.A. NP267214

* UP TO +.50[13]
CASE BULGE

MAX. TERMINAL
TIGHTENING TORQUE
15 FT-LBS

NP267192A

	GE ENERGY FORT EDWARD, N.Y., U.S.A.		SIZE A	<h1>OUTLINE</h1> <h2>19L1041WH3</h2>
	DRAWN	B. Ross	DATE	
ISSUED		DATE		SHEET 2 CONT ON -

DISTR. TO