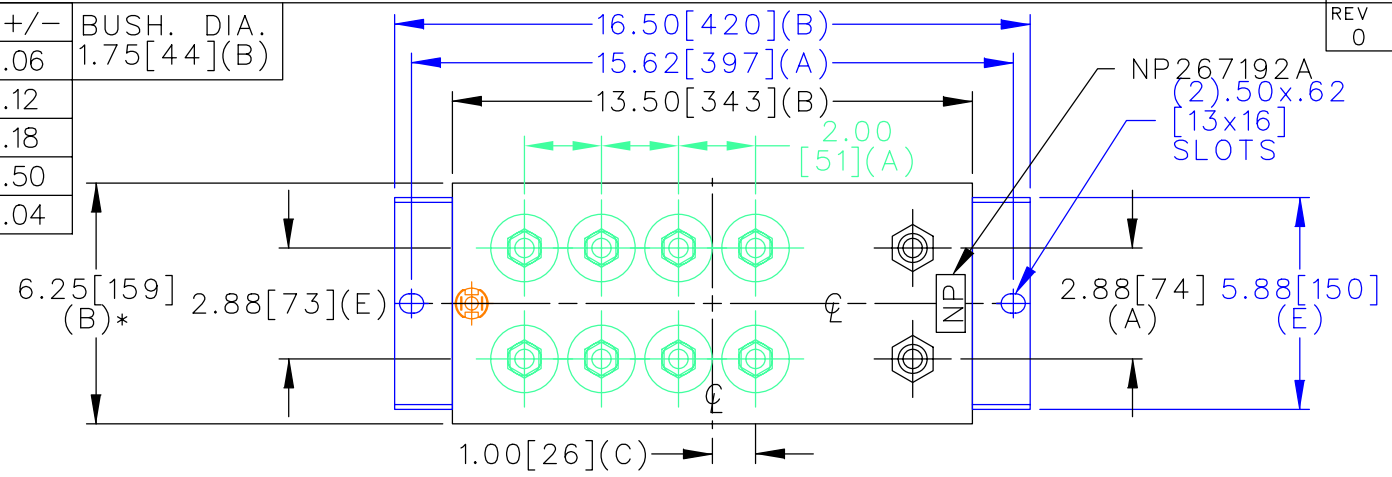
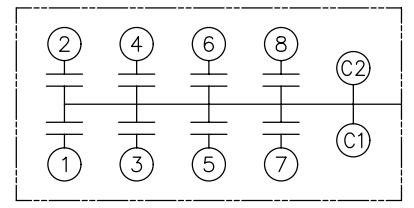


TOL	+/-	BUSH. DIA.
A	.06	1.75[44](B)
B	.12	
C	.18	
D	.50	
E	.04	

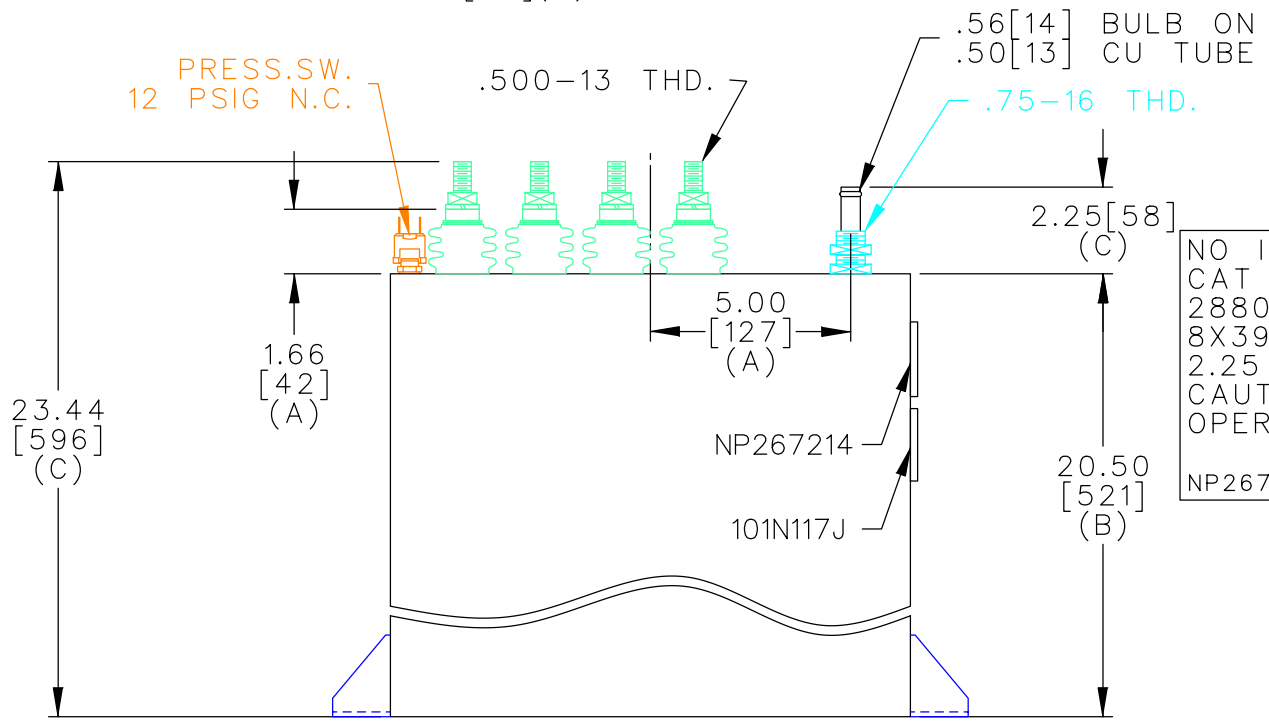


TERM	uF	kVAR
1	39.79	360
2	39.79	360
3	39.79	360
4	39.79	360
5	39.79	360
6	39.79	360
7	39.79	360
8	39.79	360



SCHEMATIC DIAGRAM - 801

PRESS.SW.  
12 PSIG N.C.



NO INTERNAL DISCH RESISTORS  
 CAT 19L1043WH4 SN  
 2880KVAR 1200V 1000HZ 1PH  
 8X39.79 UF/TAP  
 2.25 GAL COMBUSTIBLE LIQUID  
 CAUTION! BEFORE INSTALLING OR  
 OPERATING READ GEH-2733  
 NP267214

\* UP TO +.50[13]  
CASE BULGE

MAX. TERMINAL  
TIGHTENING TORQUE  
15 FT-LBS

NP267192A

<p>CAPACITOR &amp; POWER PROTECTION FORT EDWARD, N.Y., U.S.A.</p>	SIZE	UNIT WEIGHT	<h1>OUTLINE</h1> <h2>19L1043WH4</h2>	DISTR TO
	A	104 / 47 LB/KG		
DRAWN 11/15/96 ISSUED	LRD 11/15/96	SCALE	version	SHEET 2 CONT. 3