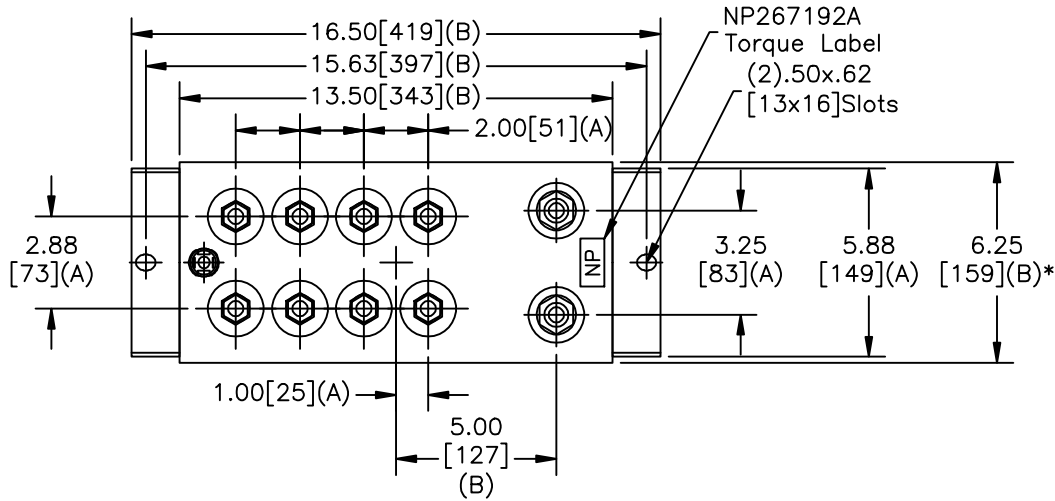
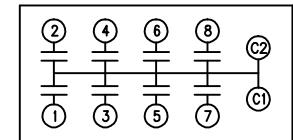
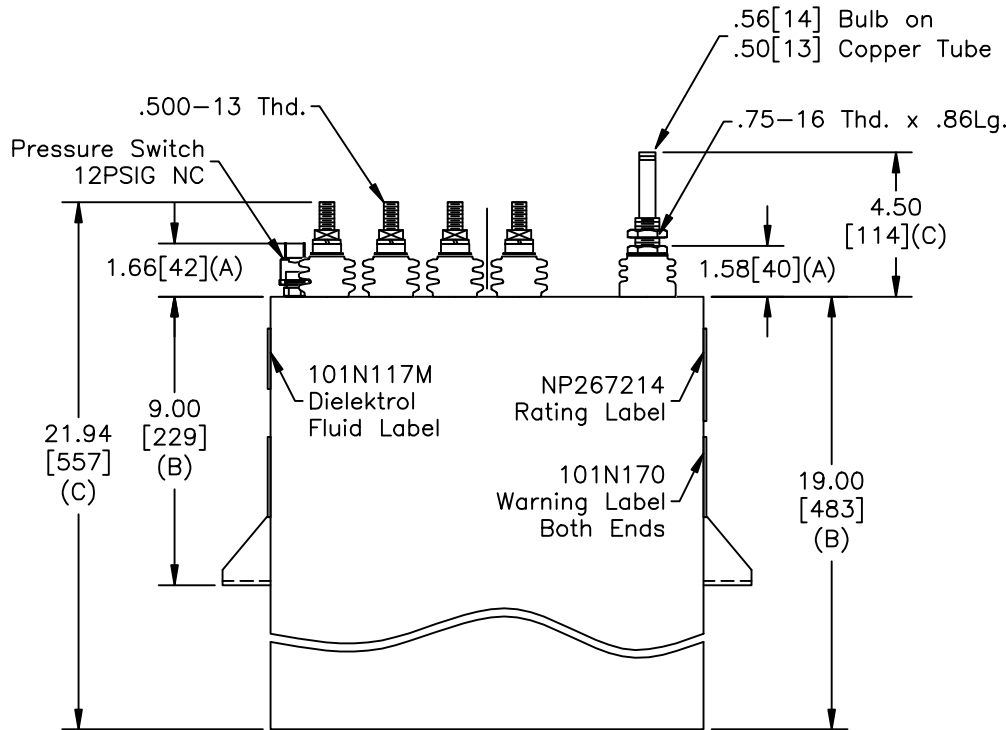


SIZE A	DWG NO 19L1046WH4026	SHT 2	REV
REV	DESCRIPTION	DATE	APPROVED

TOL	+/-
A	.06
B	.12
C	.18
D	.50
E	.04
BUSH. DIA.	1.75[44](B)



TERM	uF	kVAR
1	125	165.9
2	125	165.9
3	125	165.9
4	125	165.9
5	125	165.9
6	125	165.9
7	125	165.9
8	125	165.9



SCHEMATIC DIAGRAM - 800

**GE CAPACITOR**  
 NO INTERNAL DISCH RESISTORS  
 CAT. 19L1046WH4026 SN  
 1327KVAR 650V 500HZ 1PH  
 8x125UF/TAP  
 2.26 GAL. COMBUSTIBLE LIQUID  
 CAUTION! BEFORE INSTALLING OR  
 OPERATING READ GEH-2733  
 MADE IN USA NP267214

NOTES:

- Maximum terminal tightening torque  
 .50-13 thd. 15 ft-lbs. 20.3 N-m  
 .75-16 thd. 25 ft-lbs. 33.9 N-m
- Minimum water flow 1 GPM (3.8 l/m)

\* UP TO +.50[13] CASE BULGE

MAX. TERMINAL TIGHTENING TORQUE  
15 FT-LBS.

NP267192A

<b>GE ENERGY</b> FORT EDWARD, N.Y., U.S.A.		SIZE <b>A</b>	Est Weight 88 lbs.	<b>OUTLINE</b> <b>19L1046WH4026</b>		DISTR. TO
DRAWN	DATE 6/16/2010	SCALE	WC15	SHEET 2	CONT ON 3	
ISSUED	DATE 6/16/2010					