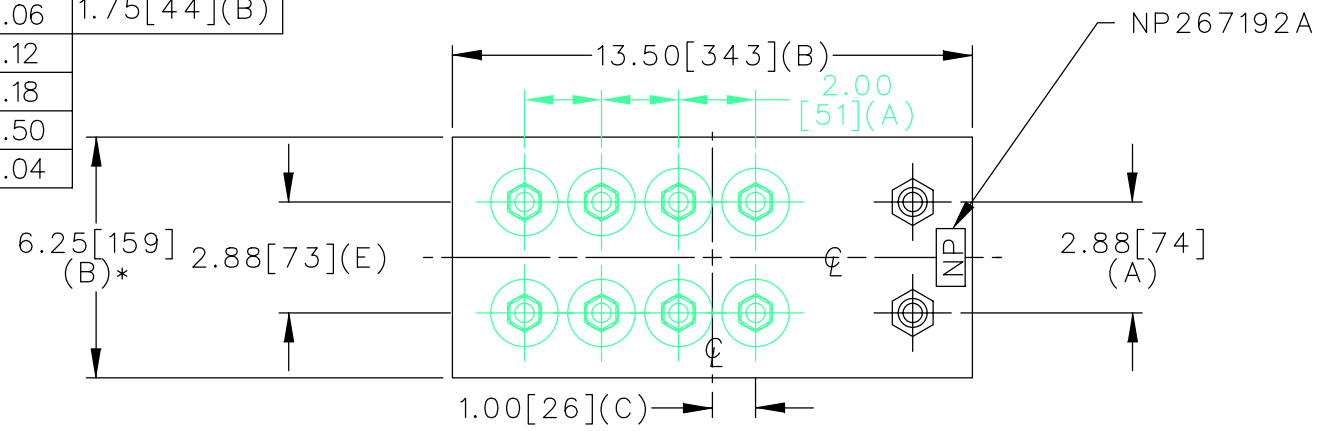
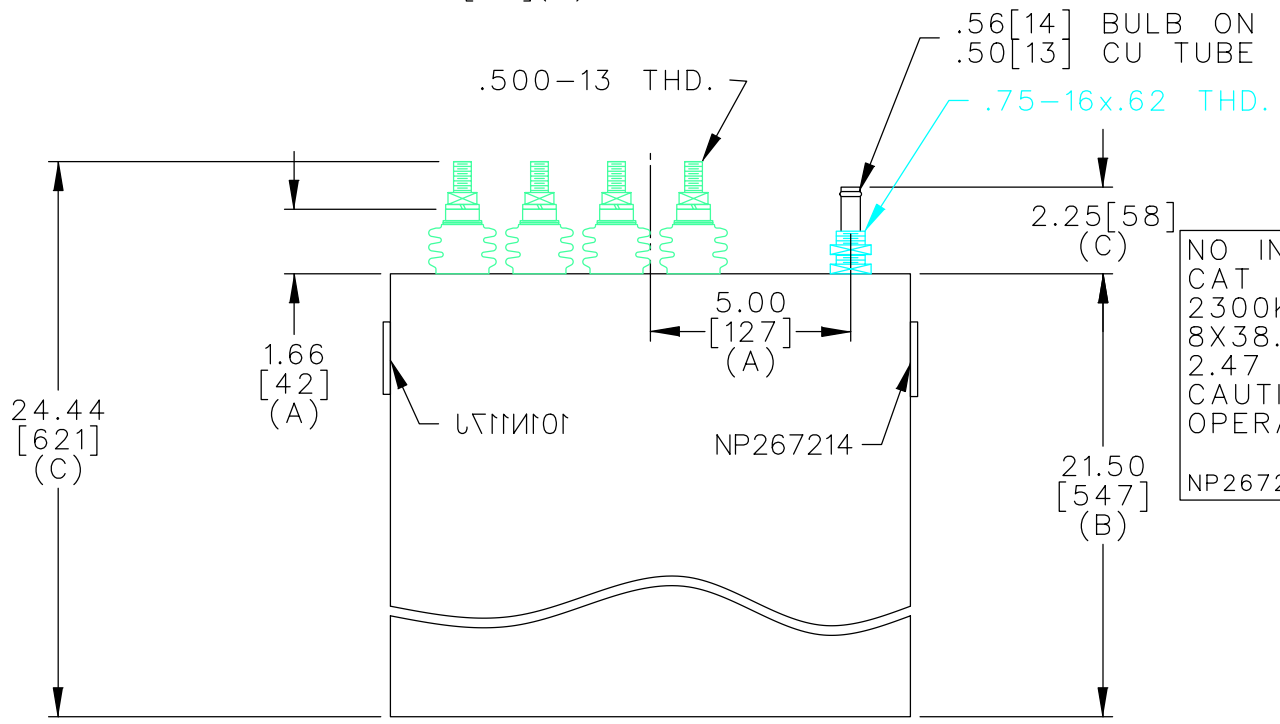
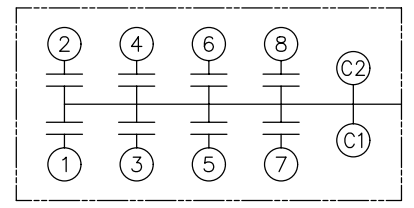


TOL	+/-	BUSH. DIA.
A	.06	1.75[44](B)
B	.12	
C	.18	
D	.50	
E	.04	



TERM	uF	kVAR
1	38.51	287.5
2	38.51	287.5
3	38.51	287.5
4	38.51	287.5
5	38.51	287.5
6	38.51	287.5
7	38.51	287.5
8	38.51	287.5



NO INTERNAL DISCH RESISTORS
 CAT 19L1047WH1 SN
 2300KVAR 1090V 1000HZ 1PH
 8X38.51 UF/TAP
 2.47 GAL COMBUSTIBLE LIQUID
 CAUTION! BEFORE INSTALLING OR
 OPERATING READ GEH-2733
 NP267214

* UP TO +.50[13]
CASE BULGE

MAX. TERMINAL
TIGHTENING TORQUE
15 FT-LBS

NP267192A

	CAPACITOR & POWER PROTECTION FORT EDWARD, N.Y., U.S.A.		SIZE A	UNIT WEIGHT 97 / 44 LB/KG	OUTLINE 19L1047WH1	SHEET 2 CONT. 3 ON ON
	DRAWN 11/06/96	LRD 11/06/96	SCALE WC12	version		
ISSUED						

DISTR TO